

# THAAI CASTING LIMITED

*Manufacturing of Aluminium Pressure Die Casting Dies, Components,  
Machined Parts, Induction Hardening and Nitriding*

Date: 04.06.2025

To,

National Stock Exchange of India Ltd.  
Exchange Plaza, 5th Floor,  
Plot No. C /1, G Block,  
Bandra - Kurla Complex,  
Bandra (E), Mumbai – 400 051, Maharashtra, India.

Scrip Symbol: TCL

Subject: Announcement under Regulation 30 of Securities and Exchange Board of India (Listing Obligations and Disclosure Requirements) Regulations, 2015.

Dear Sir / Madam,

Pursuant to Regulation 30 read with Schedule III of the SEBI (Listing obligations and Disclosure Requirements) Regulations, 2015, we have enclosed herewith the Investor Presentation released by the company for the Half Year and Year ended 31st March, 2025.

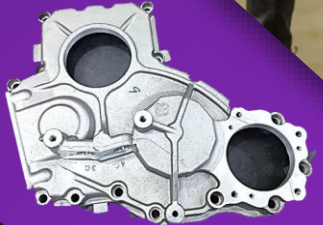
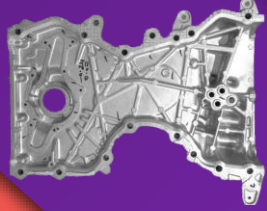
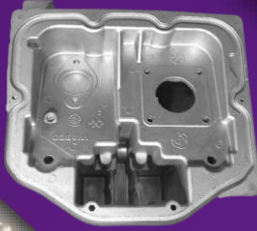
Kindly acknowledge and take the same on records.

Thanking you,

Yours faithfully,  
For THAAI CASTING LIMITED

**ANANDAN S** Digitally signed by ANANDAN S  
Date: 2025.06.04 11:25:12  
+05'30'

SRIRAMALU ANANDAN  
MANAGING DIRECTOR  
DIN: 02354202



Where Metal Meets Precision

H2 FY25 Investor Presentation

Particulars (₹ Cr)	Half Year Ended			Full Year Ended	
	31st March, 2025	30th September, 2024	31st March, 2024	31st March, 2025	12th June, 2023 to 31st March, 2024
<b>Revenue</b>	68.75	53.46	48.00	122.21	70.96
<b>EBITDA</b>	16.08	14.50	14.68	30.58	19.72
<b>EBITDA Margin (%)</b>	23.39%	27.12%	30.59%	25.02%	27.80%
<b>Net Profit</b>	5.68	5.37	8.21	11.05	10.66
<b>Net Profit Margin (%)</b>	8.27%	10.05%	17.12%	9.05%	15.02%
<b>EPS (₹)</b>	2.46	2.32	3.55	4.78	6.00

Particulars (₹ Cr)	Half Year Ended			Full Year Ended	
	31st March, 2025	30th September, 2024	31st March, 2024	31st March, 2025	12th June, 2023 to 31st March, 2024
Revenue	58.75	47.76	48.00	106.51	70.96
EBITDA	14.67	12.53	14.68	27.20	19.72
EBITDA Margin (%)	24.97%	26.23%	30.59%	25.53%	27.80%
PAT	6.37	5.37	8.22	11.73	10.66
PAT Margin (%)	10.83%	11.24%	17.12%	11.02%	15.02%
EPS (₹)	2.75	2.32	3.55	5.07	6.00

Thaai Casting Limited (Thaai Casting, The Company) established in 2011, specializing in High-Pressure Die Casting and the precision Machining of both Ferrous and Non-Ferrous materials. The company also offers Induction Hardening and Gas Nitriding, processes designed to enhance the durability and performance of steel components.

With over three decades of industry experience, the company focuses on manufacturing and supplying high-quality castings to the automotive sector. Thaai Casting's product portfolio includes Engine Mounting Support Brackets, Transmission Mounts, Steering Wheels, Electrical Connectors, YFG Base Frames (right-hand and left-hand drive), and more.

The company follows a self-certification process, reflecting its commitment to product excellence, and operates on a Direct On Line (DOL) basis for efficient supply chain management. In addition to its expertise in casting & machining, Thaai Casting focuses on enhancing the performance of components through advanced processes such as Gas Nitriding and Induction Hardening. These capabilities are particularly valuable in demanding applications like windmill gearboxes. The company is expanding its infrastructure with new facilities for gas nitriding, gear shaping, & heavy machining, supporting its long-term growth strategy and product diversification. Thaai Casting is committed to continuous improvement & innovation, reinforcing its position as a trusted player in the industry.



Thaai Casting Limited mission and vision is to set a benchmark in Quality Leadership. We Deliver Quality Moulds in much shorter lead time of manufacturing as required from your conceptual thoughts & Design.

Maintain our Reputation as a Reliable Source for Quality Die Cast & Machined Products.



Company Incorporated

ISO 9001:2008

2011



SQ Mark Award  
From Hyundai



2014

Best QCD Award From Tokai  
Tubber Auto Parts

IATF 16949 : 2016

2019



MSIL-GREEN Certification

Shifted from 700 sq.m to 9,000  
sq.m to SIPCOT



2021

Best Quality Award from Hanon  
Systems

Best Vendor Award from RSB

2022



RSB - Key Partner Award

Converted Into Public Ltd.

ISO 45001 : 2018  
ISO 14001 : 2015

BIS - Approval For PDC

Met the rigorous standards of the  
SMETA 4-Pillar Audit

2024



GE Approval



2023

## Automotive Customers



## Non-Automotive Customers



## Direct OEM



End Customers



# Where Precision Meets Production: State Of The Art Manufacturing Facility





**Mr. Anandan Sriramulu**  
*Chairman and Managing  
Director*



**Ms. Shevaani Anandan**  
*Whole Time Director*



**Mr. Sriramulu Rajasekar  
Ramakrishnan**  
*Whole Time Director*



**Mr. Chinraj Venkatesan**  
*Whole Time Director*



**Mr. Narenkumar Mandepudi**  
*Independent Director*



**Mr. Achaya Kumarasamy**  
*Independent Director*

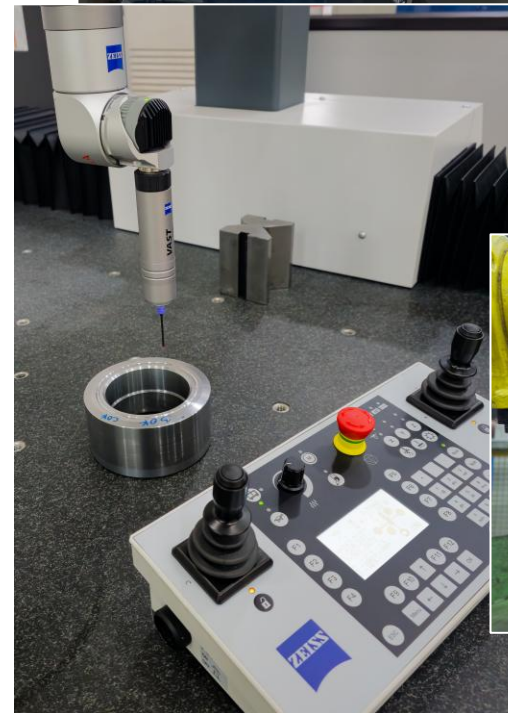


**Mr. Gautham**  
*Independent Director*

## 1

### High Pressure Die Casting

- High-pressure die casting (HPDC) is a manufacturing technique employed to create intricate metal parts by injecting molten metal into a metal Mold cavity at elevated pressure.
- Ideal for mass production, this process ensures high dimensional accuracy, superior surface finish, and the ability to craft complex shapes.
- What distinguishes the company in this competitive landscape is its ability to swiftly transition from research and development to production. The company's strong R&D capabilities and operational agility set industry benchmarks that competitors struggle to match in the short term.



2

Machining  
Of Ferrous  
& Non -  
Ferrous

## Non-Ferrous Machining Capabilities

### Computer Numerical Control (CNC) Machining for Non-Ferrous Parts

Thaai Casting Limited uses CNC lathes for precision turning, ideal for crafting cylindrical parts. Facing operations create flat surfaces, drilling ensures accurate holes, and milling shapes workpieces with versatility for intricate forms.

### Vertical Machining Center (VMC) Machining for Non-Ferrous Parts

VMCs with 4th-axis capabilities excel in advanced milling, drilling, tapping, and PCD reaming. They enable efficient fabrication of intricate geometries and high-precision finishes, especially advantageous for aluminum parts.

## Ferrous Machining Capabilities

### VTL (Vertical Turning Lathe) Setup

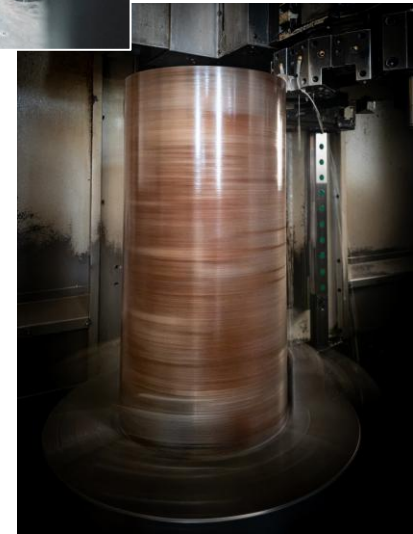
VTLs excel in heavy-duty turning for substantial components, precision facing, contouring, and crucial boring operations. Ideal for crafting symmetrical parts with meticulous internal precision.

### HMC (Horizontal Machining Center) with Pallet Changeover

HMCs excel in milling, deep hole drilling, and precision tapping. The pallet changeover system boosts large-scale productivity by minimizing setup times. Ideal for high-precision manufacturing of intricate parts.

### Cylindrical Grinding

Company specializes in cylindrical grinding, achieving highly accurate finishes up to 18 microns. This expertise is crucial for applications that demand ultra-precision.



## 3

### Induction Heating And Quenching

In the dynamic realm of automotive engineering, precision and robustness are key. Automotive parts must endure harsh conditions while offering excellent performance. A pivotal method in this endeavor is induction hardening, a precise heat treatment widely used across industries. By adjusting parameters like frequency, inductor design, and quenching techniques, manufacturers can fine-tune hardness and microstructure. Induction hardening's importance grows as industries seek enhanced performance and longevity.

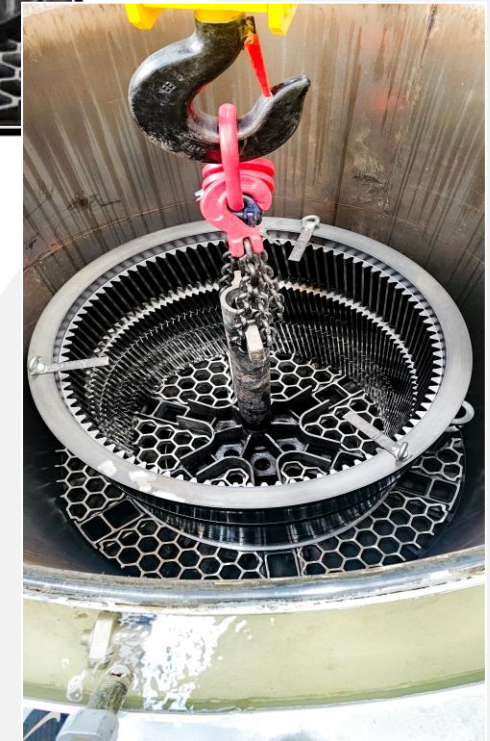
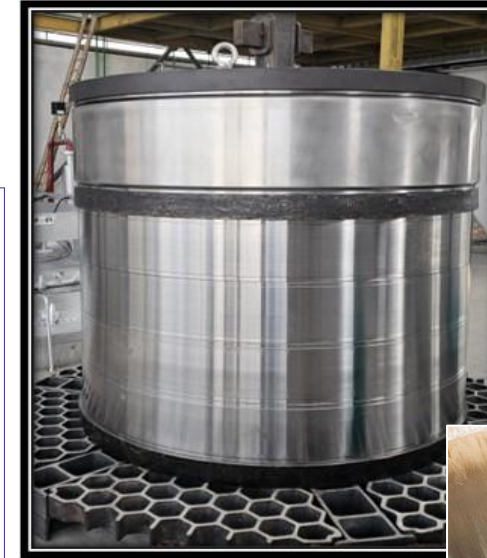
Induction hardening has wide-ranging applications across industries. In the automotive sector, it hardens parts like crankshafts and gears, enhancing durability and wear resistance. The aerospace industry uses it for aircraft parts like landing gears and turbine blades to withstand extreme conditions. Machine tools benefit from hardened shafts and bearings for increased longevity. In oil and gas, it strengthens drill pipes and valves for harsh environments. The railway industry uses it to extend the life of wheels and axles. Medical devices, including surgical instruments, are hardened for sharpness and durability. Finally, in general manufacturing, it improves the resilience of components like hydraulic pistons and fasteners.



## 4

### Gas Nitriding

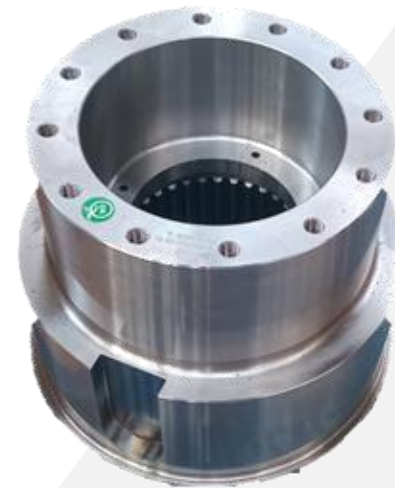
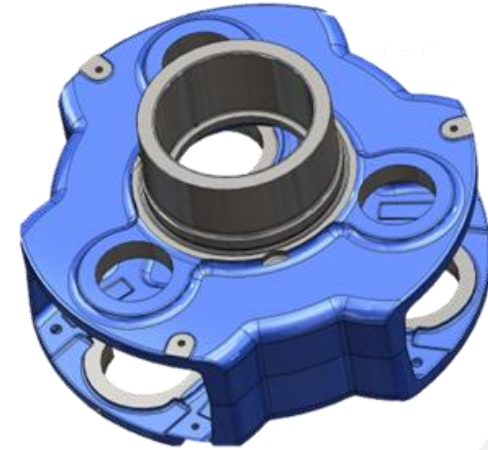
- Gas nitriding is a thermochemical surface treatment process that diffuses nitrogen into the surface of a metal to create a hard, wear-resistant layer. This process is essential for enhancing the performance and longevity of critical components, such as those used in windmill gearboxes, by providing increased resistance to wear, corrosion, and fatigue.
- SCADA System: Supervisory Control and Data Acquisition (SCADA) system ensures precise control and monitoring of the nitriding process. This system allows for real-time data collection and analysis, ensuring optimal process parameters and consistent results.
- Integrated Alarm Systems: Facility is equipped with integrated alarm systems that provide immediate alerts in case of any deviations or issues during the process, ensuring maximum safety and reliability.
- High-End Digital Flowmeters and Ammonia Cracker: To maintain precise control over gas flow rates, company utilize high-end digital flowmeters. This precision is essential for achieving the desired nitriding depth and properties. The inclusion of an ammonia cracker allows to generate the required nitrogen in the part which is crucial for achieving uniform and high-quality nitrided layers.
- Large Capacity Furnace: Company take pride in having one of the largest capacity gas nitriding furnaces in India, capable of loading up to 13 tons in a single batch. This significantly enhances productivity and allows to handle large-scale projects efficiently.



## 5

### Gear shaping

- Gear shaping machines are vital in manufacturing high-precision gears. They use a cutting tool that reciprocates up and down while rotating in synchronization with the gear blank.
- The precision ensures high-quality gears suitable for various industries, including automotive, aerospace, and heavy machinery.
- The demand for high-quality gears is increasing with the growth of industries like electric vehicles, wind energy, and robotics. Gear shaping machines are positioned to capture a significant market share due to their ability to meet the stringent quality and precision requirements of these industries.
- The Gleason gear shaping machine is notable for being one of the largest of its kind available in India, capable of handling larger gear parts and producing larger precision gears than other machines in the market.
- Equipped with state-of-the-art CNC technology and Electronic head, machine offer advanced automation capabilities, enabling efficient, repeatable, and precise gear production with minimal operator intervention.



## Engine Mounting Support Brackets



End Use

Engine Base Mounting For Cars



## Engine Mounting Support Brackets



End Use

Anti Vibration Component (Damper Device)  
For Cars



## Transmission Mounts



End Use

Anti Vibration Component (Damper Device)  
For Cars



## Armature – Steering Wheel



End Use

Steering Wheels For Cars



## Electrical Connectors



End Use

Instrumental Device For Non-Automobile

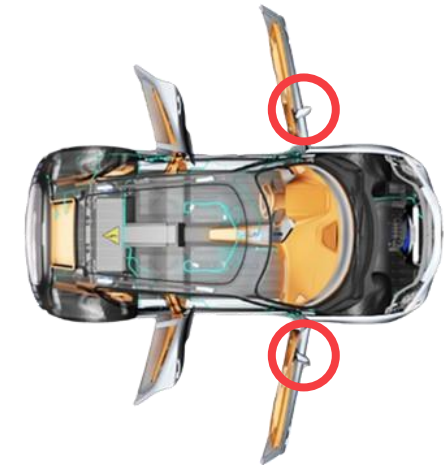


## YFG Base Frame RHD / LHD



End Use

OVRM (Outside Rear View Mirror) Component

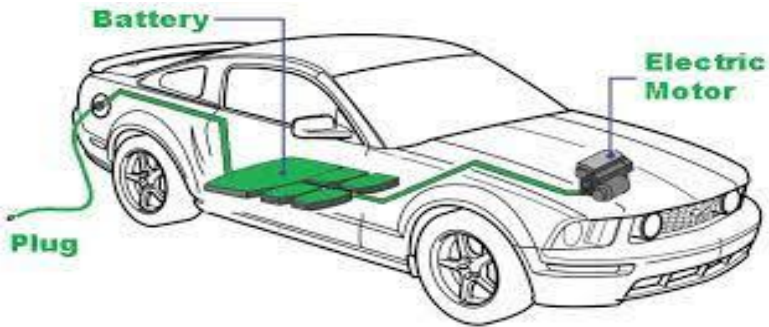


## Top Cover & Housing



End Use

EV Bus Battery Box



## Joint Flangs



End Use

Components For Cooling Device Car Radiator

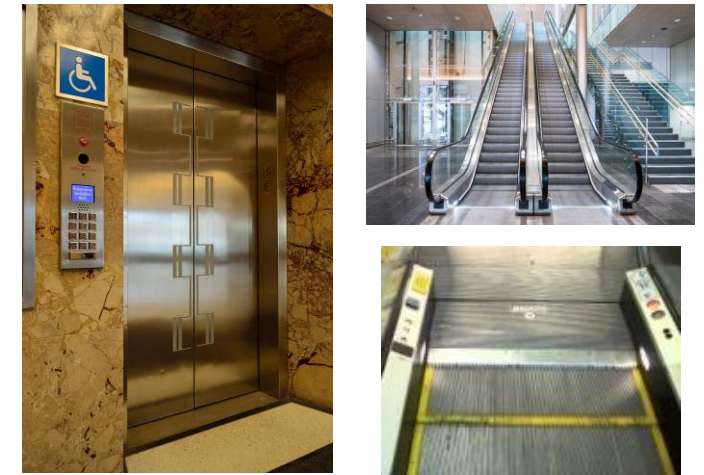


## Guide Shoe

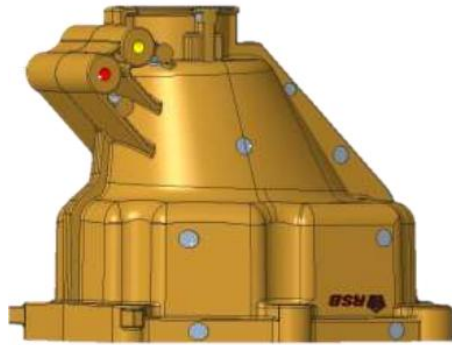


End Use

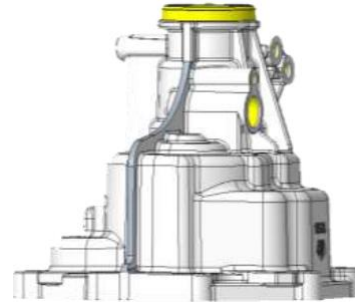
Used For Escalator & Elevator



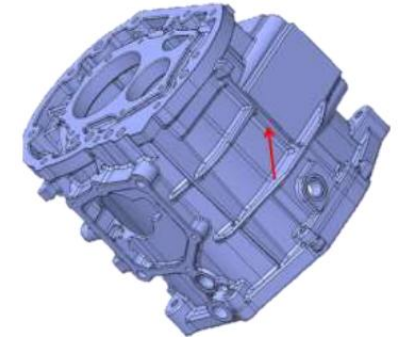
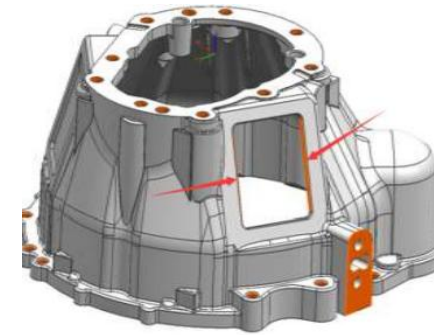
Rear Housing



Clutch Housing



Gear Box Housing

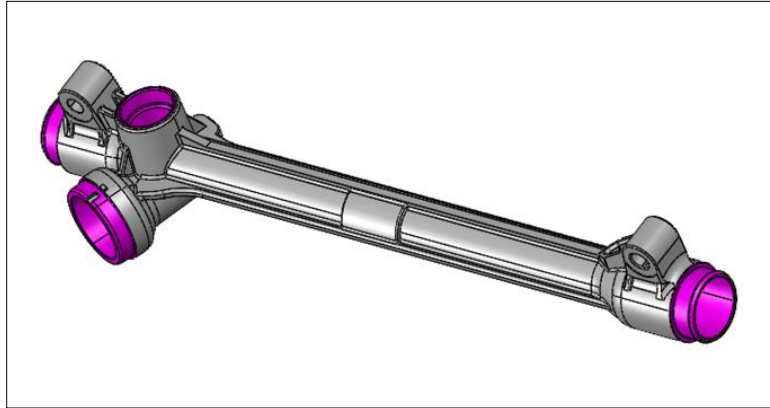


End Use

Gear Box Assembling

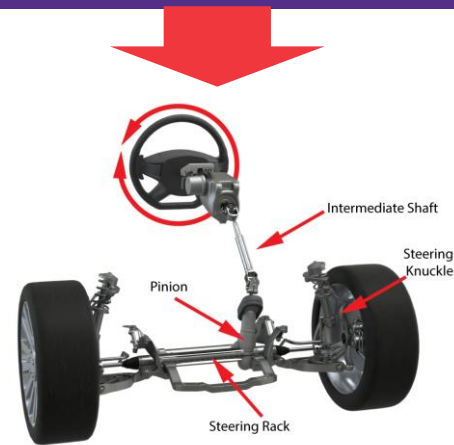


## Rack Housing



## End Use

Gear Box Assembling

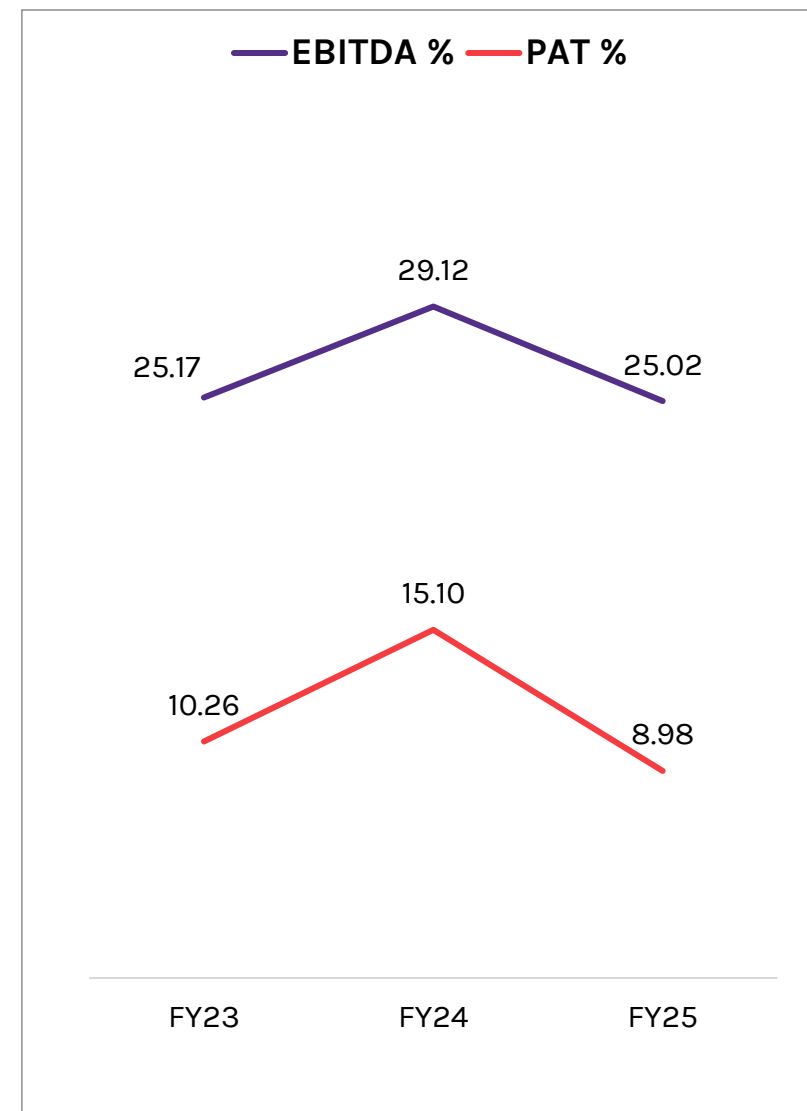
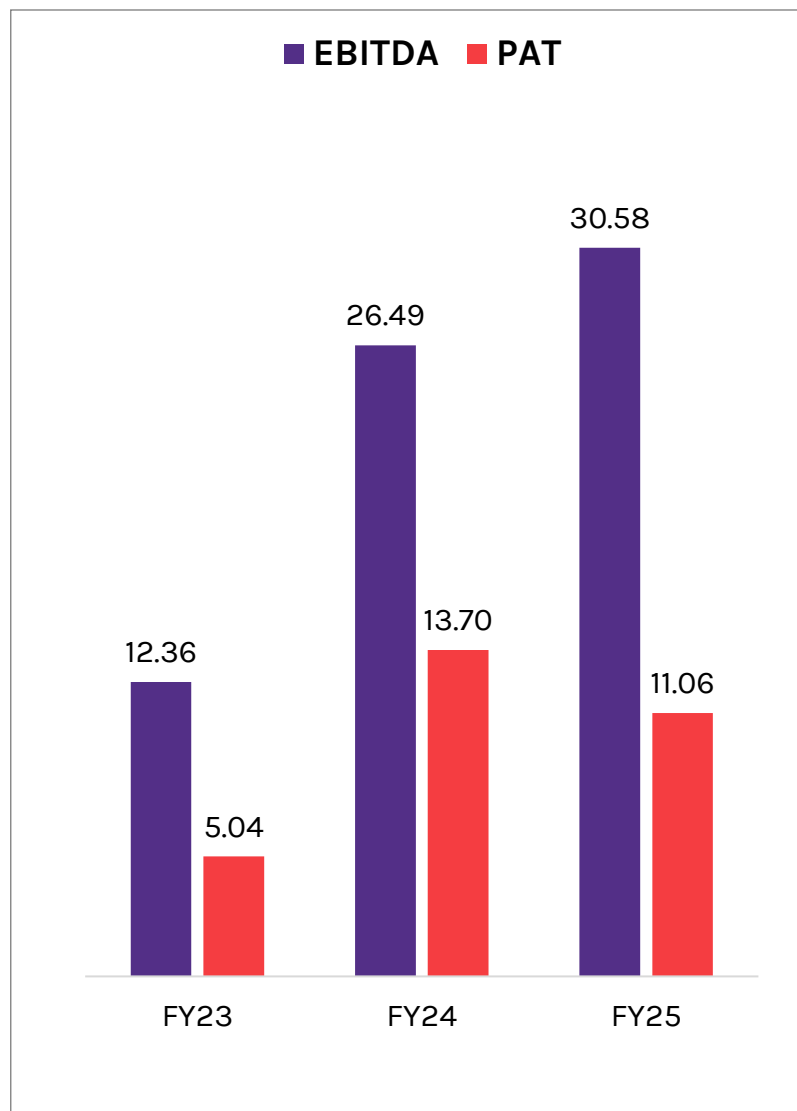
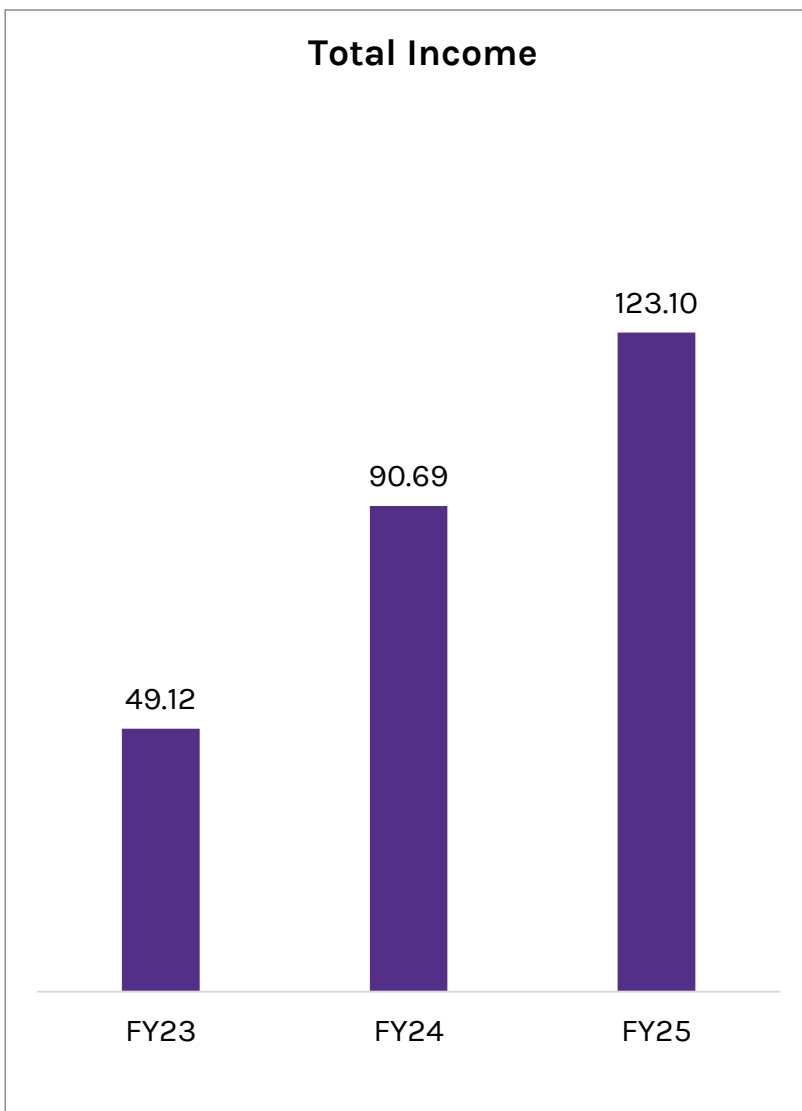


## New Order Wins



## Order Book Update





All Amount In ₹ Cr & Margins In %

# Consolidated Profit & Loss Statement

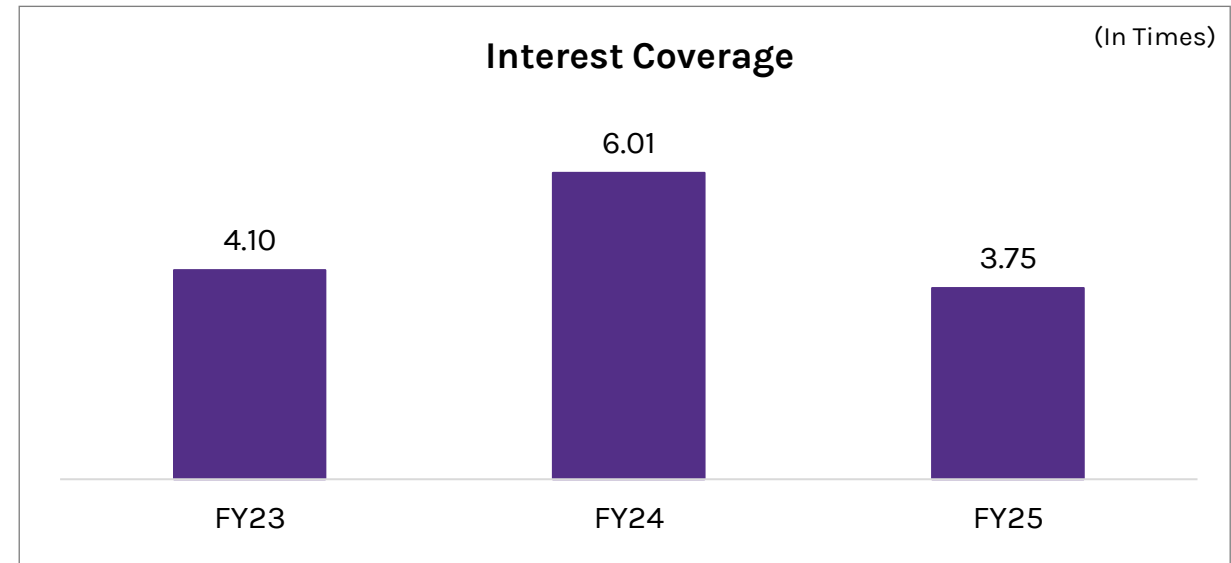
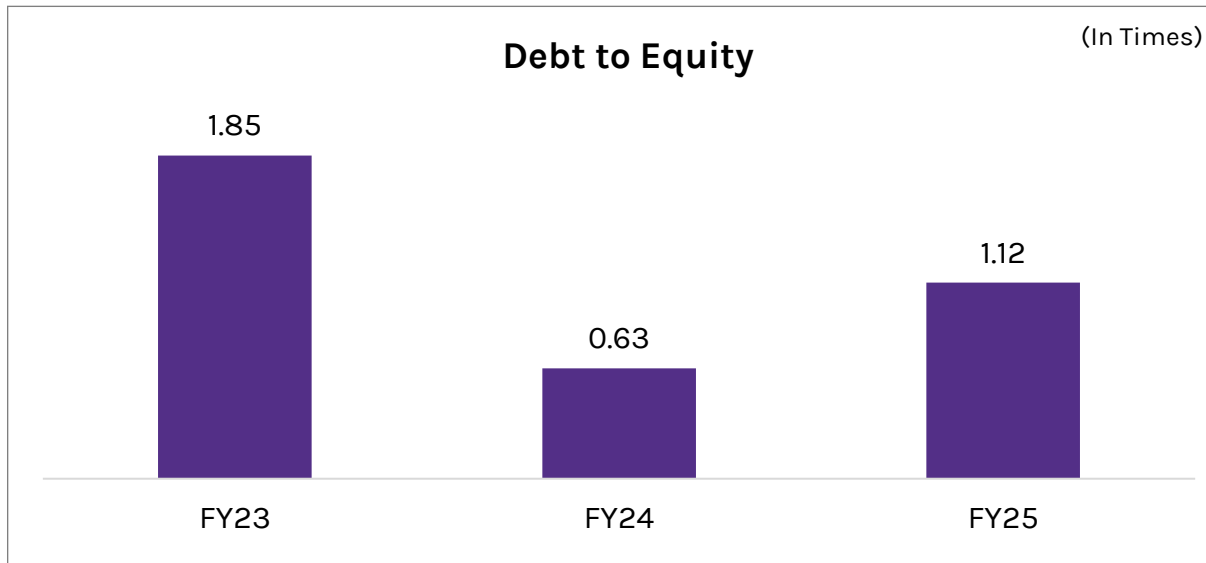
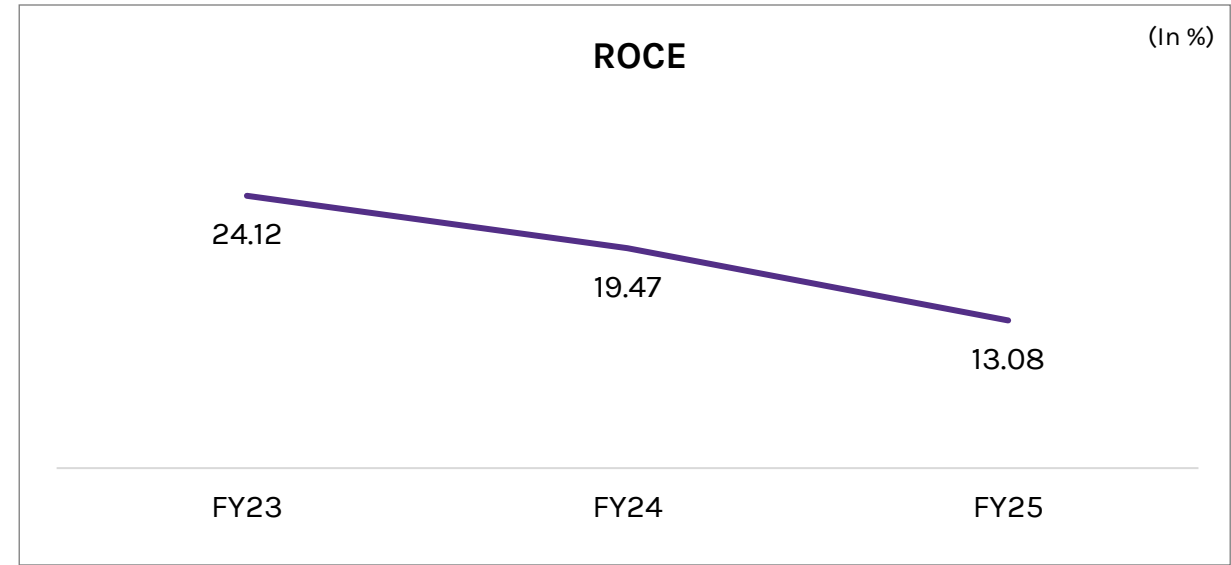
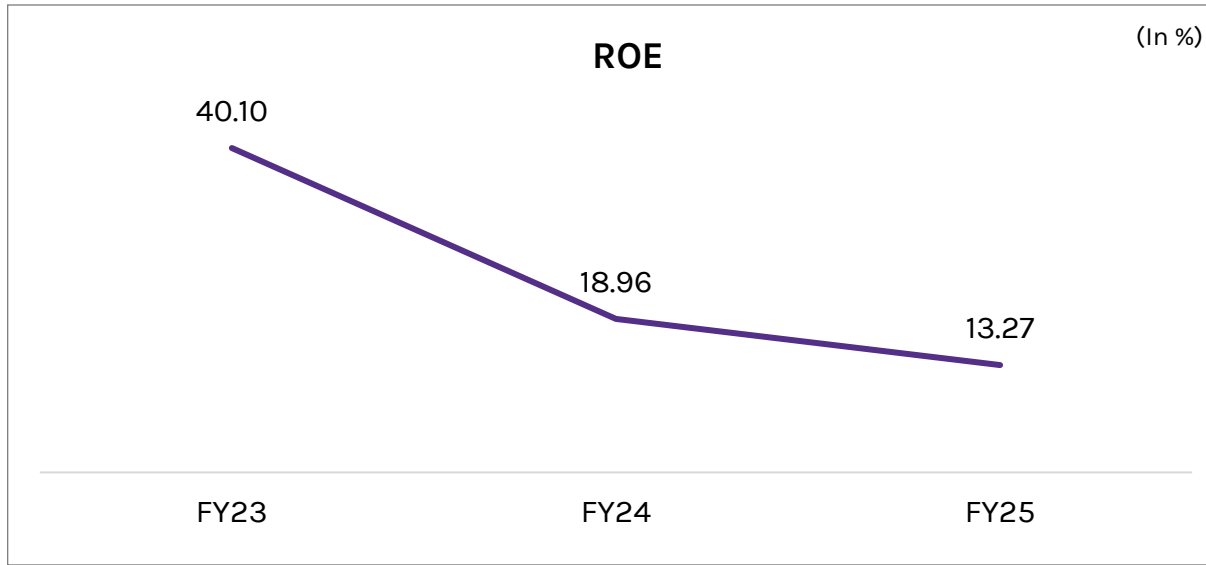
In ₹ Cr

Particulars	FY25	FY24	FY23
Net Sales	122.21	90.55	48.96
Other Income	0.89	0.14	0.16
<b>Total Income</b>	<b>123.10</b>	<b>90.69</b>	<b>49.12</b>
Raw Material costs	62.09	45.52	29.96
Employee Cost	9.19	5.24	5.46
Other Expenses	21.24	13.44	1.34
Total Expenditure	92.52	64.20	36.75
<b>EBIDTA</b>	<b>30.58</b>	<b>26.49</b>	<b>12.36</b>
EBIDTA(%)	25.02	29.21	25.17
Finance Cost	6.16	3.81	2.32
Depreciation	7.46	3.55	2.84
PBT	16.96	19.12	7.20
TAX Expense (Including Deferred Tax)	4.86	5.42	2.16
<b>PAT</b>	<b>12.10</b>	<b>13.70</b>	<b>5.04</b>
Less: Share of Minority Interest	1.04	0.00	0.00
<b>Net Profit</b>	<b>11.06</b>	<b>13.70</b>	<b>5.04</b>
NPM (%)	8.98	15.10	10.29

In ₹ Cr

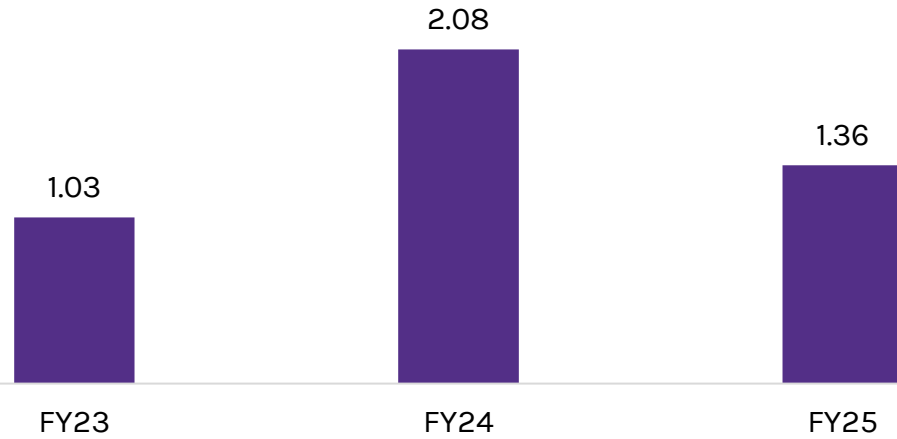
Equities & Liabilities	FY25	FY24	FY23
Equity	23.13	23.13	16.17
Reserves	60.17	49.11	0.00
<b>Net Worth</b>	<b>83.30</b>	<b>72.24</b>	<b>16.17</b>
<b>Minority Interest</b>	<b>1.85</b>	<b>0.00</b>	<b>0.00</b>
<b>Non Current Liabilities</b>			
Non Current Borrowings	49.59	28.01	18.29
Deferred Tax Liabilities	1.68	0.95	0.26
Long Term Provision	0.54	0.38	0.14
<b>Total Non Current Liabilities</b>	<b>51.80</b>	<b>29.34</b>	<b>18.68</b>
<b>Current Liabilities</b>			
Short Term Borrowings	43.86	17.53	11.57
Trade Payables	17.79	11.83	5.89
Short Term Provisions	4.16	3.41	1.70
Other Current Liabilities	4.47	0.88	0.98
<b>Total Current Liabilities</b>	<b>70.28</b>	<b>33.65</b>	<b>20.13</b>
<b>Total Equity &amp; Liabilities</b>	<b>207.23</b>	<b>135.23</b>	<b>54.99</b>

Assets	FY25	FY24	FY23
<b>Non-Current Assets</b>			
Fixed Assets	103.10	65.28	27.14
Other Non Current Financial Assets	0.00	0.00	3.66
Long-Term Loans and Advances	2.89	0.00	0.00
Other Non Current Assets	5.77	0.00	3.35
<b>Total Non Current Assets</b>	<b>111.76</b>	<b>65.28</b>	<b>34.15</b>
<b>Current Assets</b>			
Current Investments	0.50	0.00	0.00
Inventories	42.04	27.66	4.59
Trade receivables	24.53	11.91	9.34
Cash & Bank Balance	1.21	11.07	0.13
Short Term Loans & Advances	17.26	0.00	0.00
Other Current Financial Assets	0.00	0.00	6.62
Other Current Assets	9.92	19.32	0.15
<b>Total Current Assets</b>	<b>95.46</b>	<b>69.95</b>	<b>20.83</b>
<b>Total Assets</b>	<b>207.23</b>	<b>135.23</b>	<b>54.99</b>



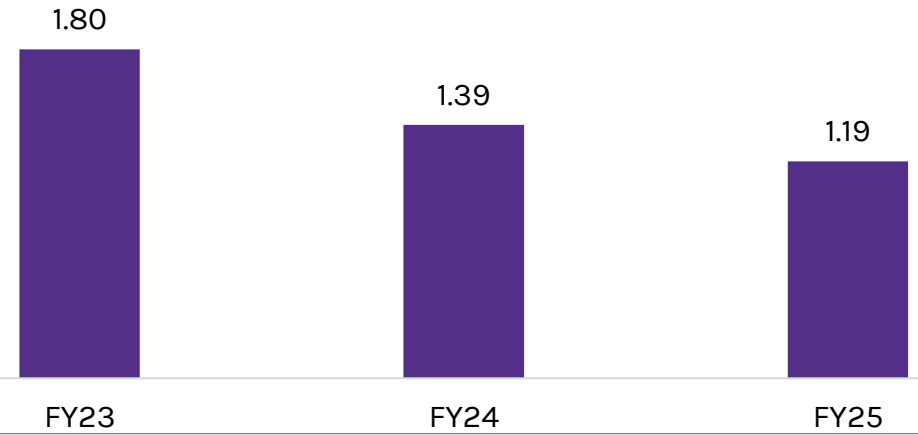
## Current Ratio

(In Times)



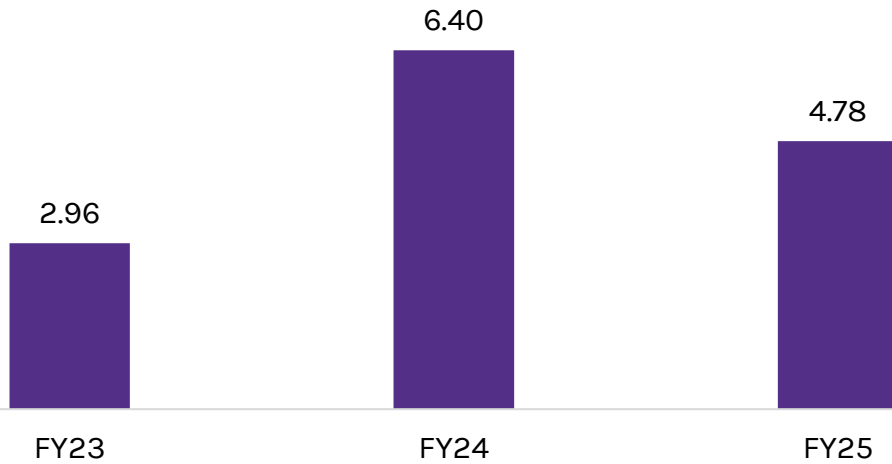
## Fixed Asset Turnover Ratio

(In Times)



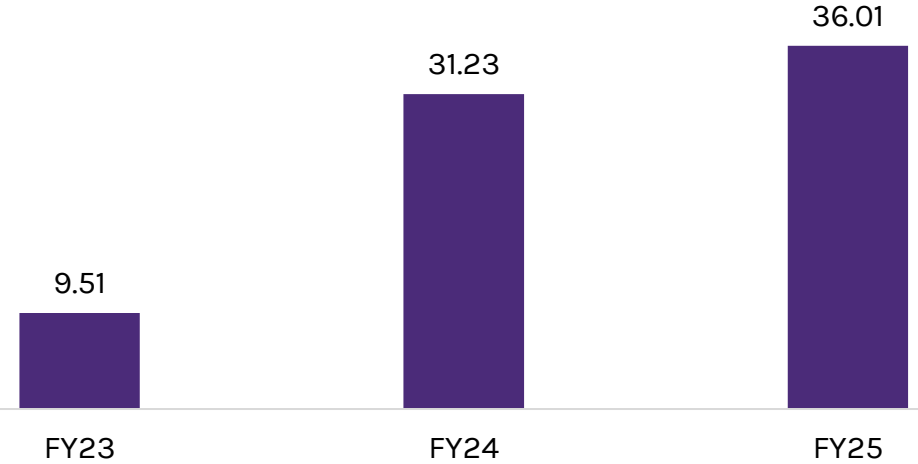
## Earnings Per Share

(In ₹)



## Book Value

(In ₹)



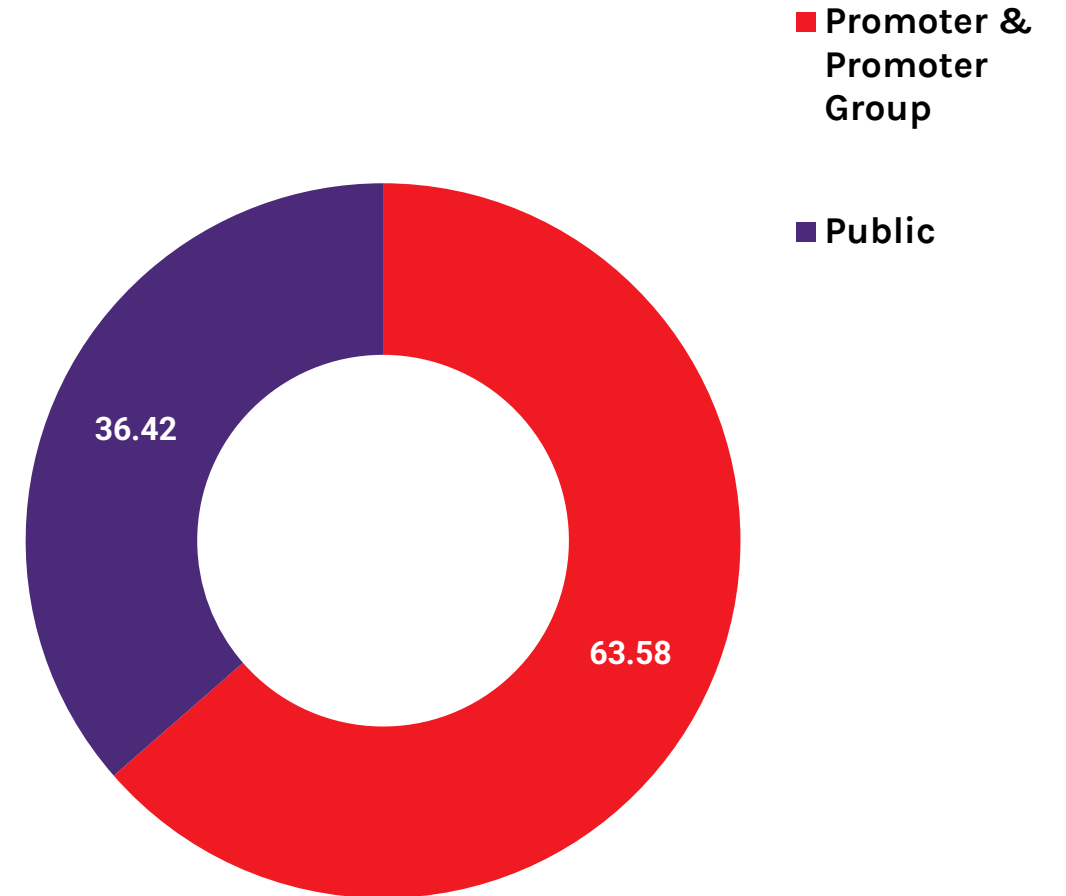
**NSE | ISIN: INE0QJL01014**

As on 03-06-2025

Share Price (₹)	90.50
Market Capitalization (₹ Cr)	209.32
No. of Shares Outstanding	2,31,29,600
Face Value (₹)	10
52 Week High-Low (₹)	248.30 - 77.15

## Share Holding Pattern

As on March-2025





## Strong Market Position in Auto Components

Thaai Casting specializes in high-precision pressure die casting and machining for both ferrous and non-ferrous materials, catering to leading automotive OEMs.



## Diverse Product Portfolio

The company manufactures a wide range of components, including engine brackets, transmission mounts, armatures, and battery enclosures for electric vehicles, addressing multiple automotive sub-segments.



## Strong Client Relationships with Top OEMs

Long-standing partnerships with key automotive players ensure stable revenue streams and reinforce Thaai's reputation as a reliable supplier.



## Strategic Focus on Wind Energy Components

The company's expertise extends to producing components for wind energy systems, allowing diversification into renewable energy markets.



## Proven Expertise and Certifications

With over 12 years of operational experience, the company boasts ISO/IATF 16949:2016 certification, ensuring stringent quality standards critical for the automotive industry.



## Advanced Manufacturing Capabilities

Investment in cutting-edge technology such as CNC machining, SCADA systems, and one of India's largest gas nitriding furnaces enhances operational efficiency and product quality.



## High Demand for Precision Gears

Equipped with one of India's largest Gleason gear-shaping machines, Thaai is well-positioned to capitalize on the rising demand for high-precision gears, especially in the wind energy sectors.



## ROE and ROCE Metrics

The company reported strong financial performance in FY25, with a ROE of 13.27% and a ROCE of 13.08%, indicating profitable growth.





## Thaai Casting Limited

A-20, Sipcot Industrial Park,  
7th Cross Street, Pillaipakkam,  
Sriperumbudur, Tamil Nadu - 602 105



## Wholly Owned Subsidiary Thaai Induction & Nitriding Pvt. Ltd.

S-27, Sipcot Industrial Park,  
7th Cross Street, Pillaipakkam,  
Sriperumbudur, Tamil Nadu - 602 105

Thaai Induction and Nitriding Pvt Ltd specializes in induction hardening and gas nitriding heat treatment technologies, delivering high-precision surface treatment solutions for critical industrial components. The subsidiary supports Thaai Casting's vertical integration strategy and enhances quality, durability, and performance in ferrous machining operations.



## SIMTECH CNC

Shed No. 33, Second Main Road, SIDCO  
Industrial Estate, Thirumudivakkam,  
Chennai - 600044.

Design and Manufacturing of Die casting Dies For- HPDC ,GDC Dies & Plastics injection moulding.

## Disclaimer

This presentation and the accompanying slides (the “Presentation”), which have been prepared by Thaaai Casting Limited, (The Company) solely for information purposes and do not constitute any offer, recommendation or invitation to purchase or subscribe for any securities & shall not form the basis or be relied on in connection with any contract or binding commitment whatsoever. No offering of securities of the Company will be made except by means of a statutory offering document containing detailed information about the Company.

This Presentation has been prepared by the Company based on information and data which the Company considers reliable, but the makes no representation or warranty, express or implied, whatsoever, and no reliance shall be placed on, the truth, accuracy completeness, fairness & reasonableness of the contents of this Presentation. This Presentation may not be all inclusive and may not contain all of the information that you may consider material. Any liability in respect of the contents of, or any omission from, this Presentation is expressly excluded.

Certain matters discussed in this Presentation may contain statements regarding the Company’s market opportunity and business prospects that are individually & collectively forward-looking statements. Such forward-looking statements are not guarantee of future performance and are subject to known and unknown risks, uncertainties and assumptions that are difficult to predict.

These risks and uncertainties include, but are not limited to, the performance of the Indian economy and of the economies of various international markets, the performance of the industry in India and world-wide, competition, the company’s ability to successfully implement its strategy, the Company’s future levels of growth expansion, technological implementation, changes and advancements, changes in revenue, income or cash flows, the Company’s market preferences and its exposure to market risks, as well as other risks.

The Company’s actual results, levels of activity, performance or achievements could differ materially and adversely from results expressed in or implied by this Presentation. The Company assumes no obligation to update any forward-looking information contained in this Presentation. Any forward-looking statements and projections made by third parties included in this Presentation are not adopted by the Company and the Company is not responsible for such third-party statements and projections.

# Thank You



**Thaaai Casting Limited**

**Add:** A-20, Sipcot Industrial Park,  
7th Cross Street, Pillaipakkam,  
Sriperumbudur, Tamil Nadu - 602 105

**Phone:** +91 93442 29999

**E-mail:** [info@thaaicasting.com](mailto:info@thaaicasting.com)

**Website:** [www.thaaicasting.com](http://www.thaaicasting.com)