



Date: 06th August 2025

National Stock Exchange of India Limited, Exchange Plaza, 5 th Floor, Plot No. C-1, G Block, Bandra- Kurla Complex, Bandra (East), Mumbai – 400051, Maharashtra, India NSE Scrip Code – SKFINDIA	BSE Limited, Phiroze Jeejeebhoy Towers, Dalal Street, Fort Mumbai – 400001, Maharashtra, India BSE Scrip Code -500472
--	---

Subject: Regulation 30 – Business Presentation at 64th Annual General Meeting held on 06th August 2025.

Dear Sir/Mam,

Pursuant to Regulation 30 read with Clause 15, Para A, Part A of Schedule III of the SEBI (Listing Obligations and Disclosure Requirements) Regulations, 2015 (“SEBI LODR”), we are herewith submitting the Business Presentation shared during the 64th Annual General Meeting held on 06th August 2025 by Mr. Mukund Vasudevan, Managing Director of the Company as **Annexure-A**.

We request you to take the above information on record and disseminate the same on your respective websites.

Yours faithfully,
For SKF India Limited

Ranjan Kumar
Company Secretary & Compliance Officer

SKF India Limited

Registered office: Chinchwad, Pune 411 033, Maharashtra, India

Tel: +91 (20) 6611 2500, Fax no: +91 (20) 6611 2396, Web: www.skf.com, Email id: investorIndia@skf.com

CIN: L29130PN1961PLC213113



SKF India Limited 64th Annual General Meeting

Mukund Vasudevan
Managing Director

Wednesday, 6th August 2025



About SKF India

Today's
Agenda



Our Demerger Strategy

SKF India – Key Drivers

Summary

A trusted name in motion technologies since 1961



Innovative solutions to reduce friction and extend reliability across industries

What we offer



Where we stand

3

State-of-the-art manufacturing facilities

441

Distributors

4

Offices

1,727

Employees



We lead by living our Purpose and shaping the Culture every day



INR 49,199.2 Million

▲ 7.65% YoY

Revenue From Operations

INR 7,631 Million

▲ 3.72% YoY

Profit Before Tax

INR 5,658.1 Million

▲ 2.54% YoY

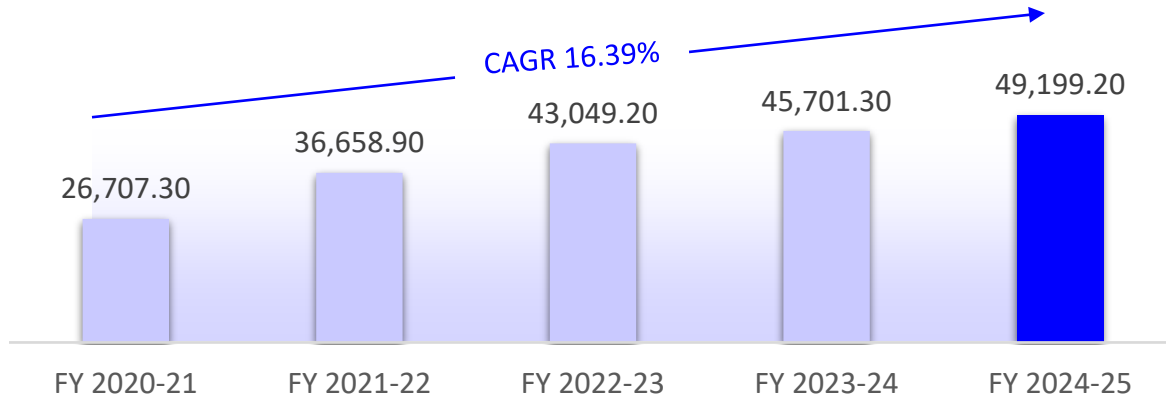
Profit After Tax

INR 114.4

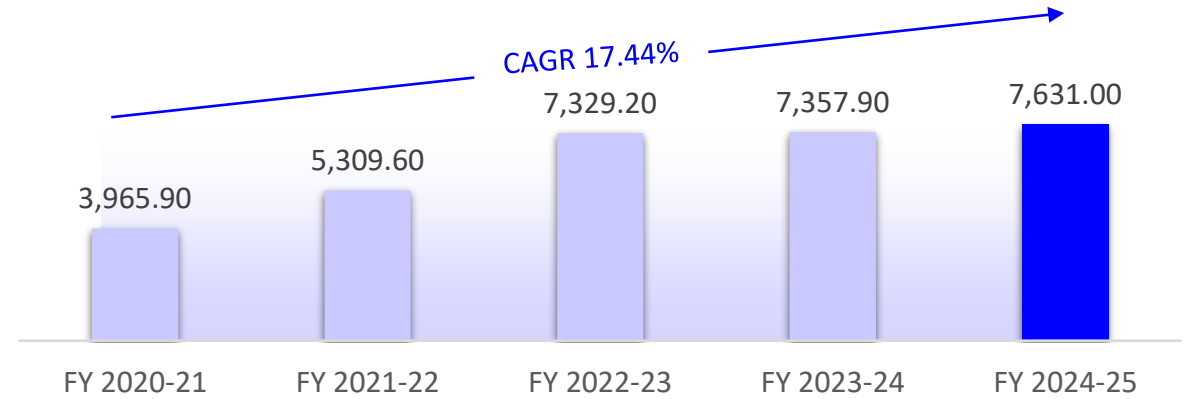
▲ 2.51% YoY

Earning Per Share

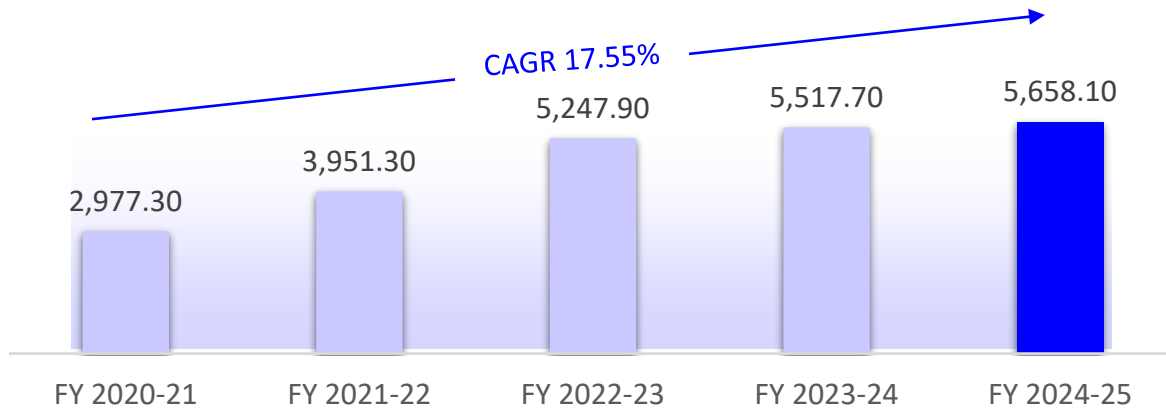
Revenue From Operations (in MINR)



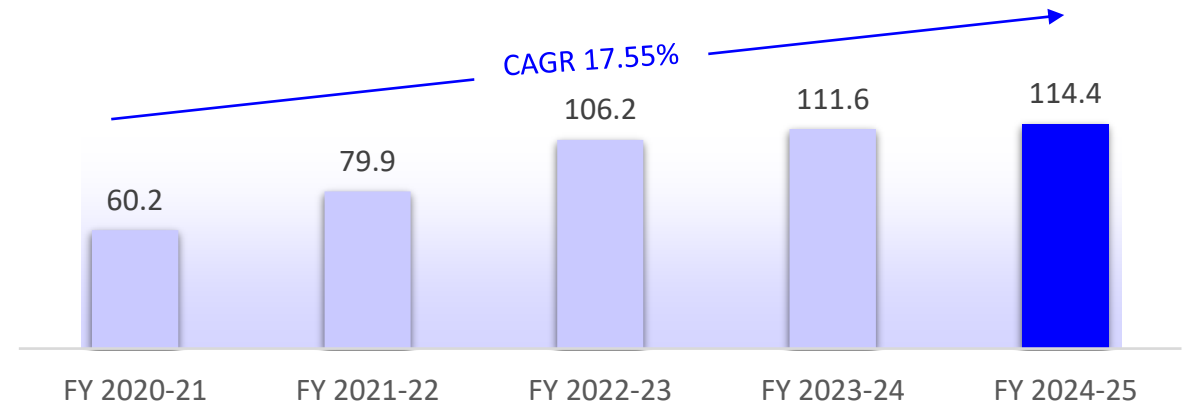
Profit Before Tax (in MINR)



Profit After Tax (in MINR)



Earnings Per Share (INR)



About SKF India

**Today's
Agenda**



Our Demerger Strategy

SKF India – Key Drivers

Summary

Unlocking the power of two for profitable growth

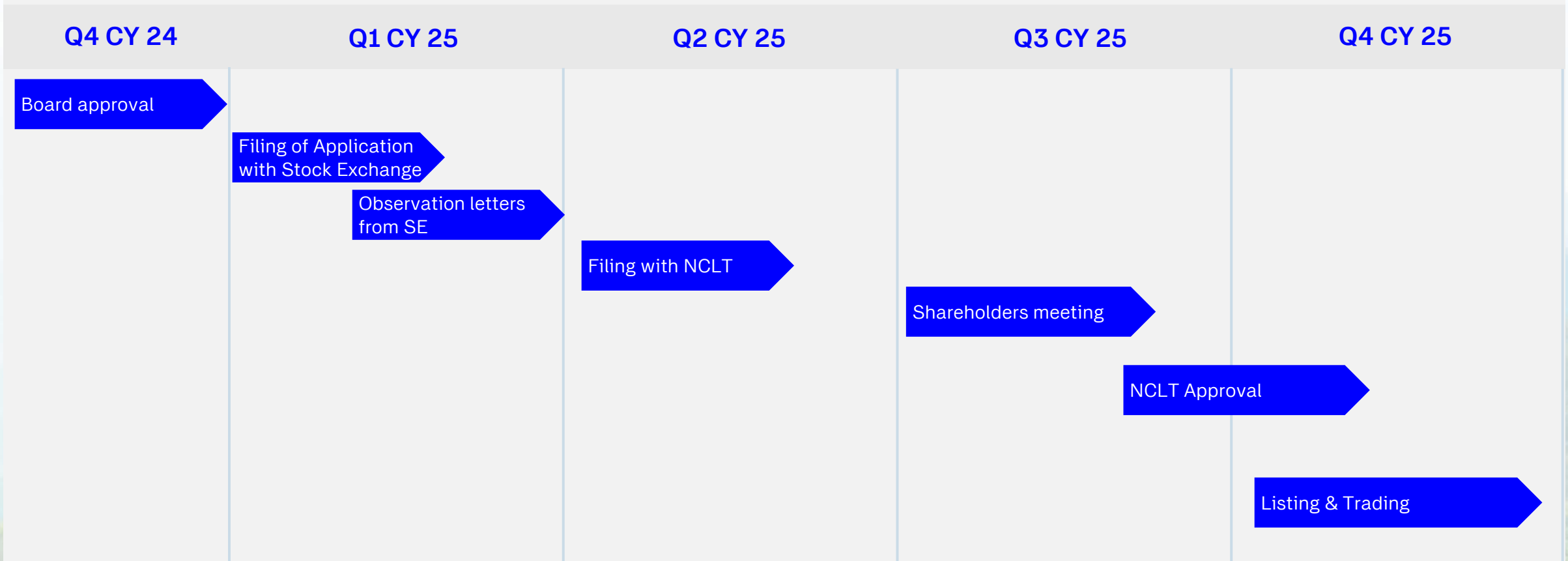
What it means for Automotive Business?

- Deepen our position in e-mobility
- Accelerate innovation for OEM and customers
- Make faster decisions and quicker launches

What it means for Industrial Business?

- Grow faster
- Deliver solutions tailored to each Industrial vertical
- Strengthen our global position

Demerger Implementation Schedule*



Our journey to transform into two fit-for-purpose global organizations is *ON TRACK*

** Above timeline is just an internal estimation and is subject to receiving necessary approvals*

Automotive Business

Industrial Business



Manufacturing Facilities

Bangalore

Pune

Haridwar

7 lines
12 lines
4 lines

3 lines
10 lines



Land

Bangalore

Pune

Haridwar

~85%
~52%
~100%

~15%
~48%



Manpower

~55% to 60%

~40% to 45%

About SKF India

Today's
Agenda



Our Demerger Strategy

SKF India – Key Drivers

Summary



We help our industrial customers increase speed-to-market, enhance profitable growth and make their operations more sustainable

- **Drive Commercial excellence – sell more value customers**



- **Co-create innovative solutions tailored for Indian OEMs**



- **Lower total cost of ownership through Services and digital monitoring to ensure less unplanned stoppages**

- **Reduce time to market and costs by manufacturing more in India**

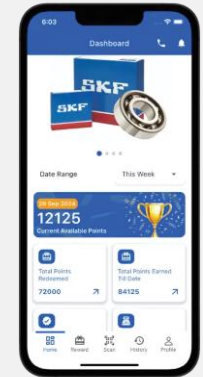
SKF's solutions boost productivity, improve efficiency, and drive sustainability across the automotive value chain

- Partner with OEMs to co-develop solutions



- Enhance product quality

- Strengthen our aftermarket services



- Deliver real-time benefits



Smart Converter for Steel Mills



An end-to-end solution, including sealed bearings and best-in-class condition monitoring:

- Real time visibility on operation cycles
- Reduced downtime



Wind Energy

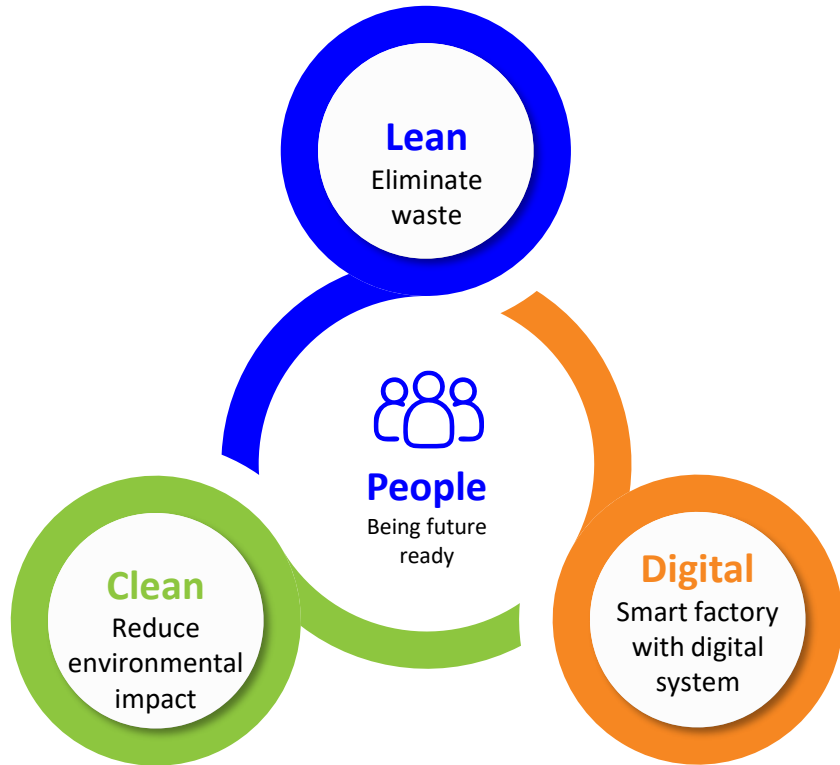


Cutting-edge solution to enhance lifetime reliability of wind turbines

- End-to-end monitoring of Wind Turbines
- Predictive diagnostics
- Early detection of failures

Reduced Total Cost of Ownership

OPERATIONS STRATEGY



Lean

- Footprint expansion for wheel end and CRB
- Increased lean maturity across factories to reduce waste, bring down manufacturing cost and enhance capacity utilization



Digital

- Implementation of smart manufacturing and digital infrastructure
- Energy and water management systems implemented



Clean

- All sites are decarbonized (Scope 1 & 2) and RE100 compliant
- 31% reduction in water consumption; 59% waste recycling rate

Diversity, equity & inclusion (DEI)

Parivartan | SHE LEADS | Career Climber



39%

Of all new hires in FY 2024-25 were women

16.2%

Shopfloor women representation

17.5%

Gender Diversity across the workforce

Health and Safety

A core priority across all SKF



33%

Reduction in accidents

25%

Increase on proactive safety reporting

SKF India was recognised as a Top Employer by the Top Employers Institute and were also among the Most Preferred Workplaces for Women



Climate transformation

Reducing emissions and building climate resilience

28%

Reduction in Scope 1 and 2 emission over the previous year

~5

Metric tons of CO₂e annually reduced
(through biogas plant implementation)



Circularity

Using resources responsibly and designing for longevity

59%

Waste Recycled



Responsible business

Ensuring ethical, transparent, and sustainable operations

Zero

Non-compliance
(No substantial non-compliance reported)



WeGyaan – STEM Education



Udaan – Scholarship for girls & Divyaang



YES – Youth Empowerment at SKF - Skill Development



Water Sustainability – Environment



4,00,000+ lives impacted



About SKF India

Today's
Agenda



Our Demerger Strategy

SKF India – Key Drivers

Summary

- Strengthening performance with consistent revenue and profit growth
- Executing our intelligent, clean, and customer-centric strategy
- Transforming into two fit-for-purpose organisations to unlock more value

+7.65%
Revenue from operations

+2.54%
Profit after tax

+2.51%
Earnings per share

SKF