



Share India Securities Limited

(CIN : L67120GJ1994PLC115132)

Member : NSE, BSE, MCX, NCDEX & MSEI
Depository Participant with 'CDSL'
SEBI Registered Research Analyst
AMFI Registered Mutual Fund Distributor



May 24, 2025

To,
BSE Limited
Scrip Code: 540725

To,
National Stock Exchange of India Limited
Symbol: SHAREINDIA

Sub: Investor Presentation on audited Financial Results of the Company for the quarter and Financial Year ended March 31, 2025.

Dear Sir,

Pursuant to Regulation 30 of the SEBI (Listing Obligations and Disclosure Requirements) Regulations, 2015 ("SEBI Listing Regulations") read with Para A of Part A to Schedule III of the SEBI Listing Regulations, please find enclosed herewith Investor Presentation on the audited Financial Results of the Company for the quarter and financial year ended March 31, 2025.

The above information is also available on the website of the Company, i.e., www.shareindia.com.

Please take the same on your records.

Thanking you,

Yours faithfully,
For Share India Securities Limited

Vikas Aggarwal
Company Secretary & Compliance Officer
M. No.: F5512



Share India
You generate, we multiply

Investor Presentation
Q4 & FY25



Q4 & FY25

Financial Performance



Q4 & FY25 - Consolidated Performance Highlights



Q4FY25



₹ 239 Cr

TOTAL REVENUE
49 % YoY ↓



₹ 56 Cr

EBITDA
68 % YoY ↓



23%

EBITDA MARGIN



₹ 19 Cr

NET PROFIT
84 % YoY ↓



8%

NET PROFIT MARGIN



₹ 0.7

BASIC EPS

FY25

₹ 1,449 Cr

TOTAL REVENUE
2 % YoY ↓

₹ 538 Cr

EBITDA
19 % YoY ↓

37%

EBITDA MARGIN

₹ 328 Cr

NET PROFIT
23 % YoY ↓

23%

NET PROFIT MARGIN

₹ 15.6

BASIC EPS

Q4 & FY25 Consolidated Results Highlights



P&L (Rs Cr)	Q4FY25	Q4 FY24	Y-O-Y	Q3FY25	Q-O-Q	FY25	FY24	Y-O-Y
Interest Income	61	49		59		224	163	
Fees & Commission	42	66		47		203	204	
Net Gain/Loss on FV Changes	126	331		222		888	1069	
Dividend Income	4	4		2		22	15	
Sale of Goods	4	13		10		103	23	
Sale of Services	2	2		2		9	9	
Total Revenue from Operations	239	465	-49%	342	-30%	1449	1483	-2%
COGS	4	13		8		103	22	
Staff Cost	80	114		97		374	330	
Fees and commission expense	5	12		3		25	22	
Operating expenses	78	119		78		351	387	
Other expenses	19	34		25		78	64	
Total Expenses	187	292	-36%	211	-11%	932	826	-13%
Operating Profit	52	174		131		517	657	
Other Income	3	1		7		21	6	
EBITDA	56	175	-68%	139	-60%	538	663	-19%
EBITDA Margin	23%	38%		41%		37%	45%	
Depreciation and Amortisation	6	4		4		18	14	
EBIT	50	171	-71%	134	-63%	520	649	-20%
Finance costs	27	30		22		89	90	
PBT	23	141	-84%	112	-79%	431	559	-23%
Exceptional Items	0	0		0		0	-1	
Tax	4	25		30		103	132	
PAT	19	116	-84%	82	-77%	328	426	-23%
PAT Margin	8%	25%		24%		23%	29%	
Basic EPS	0.71	6.44		3.66		15.58	25.41	

*EPS for Q4 & FY24 have been restated due to stock split as on June,2024
#EPS are not annualised for the quarters.

Milestones in FY25



Share India
You generate, we multiply

Investment in MSE



- **MSE is one of the renowned exchanges** after NSE and BSE
- Has requisite approvals for weekly expiry contract
- The company has **invested ₹59.5 crore** in the Metropolitan Stock Exchange of India (MSE), acquiring 4.958% of its post-issue share capital.
- Opportunity to introduce new weekly derivative products on **MSE SX40**
- Aims to enhance market depth and **drive trading volumes**, contributing to turnover and revenue growth
- **Increasing the market reach** & strengthening leadership position. Investing in a long term strategy

Entering into PMS



- A new subsidiary to operate in PMS sectors. Marks and entry into the fast growing Asset/Wealth management business.
- Strengthen the company's position as a **comprehensive financial service provider**
- **Boosts stakeholder credibility**
- **SEBI has approved** the Company's application to commence the business of PMS

Silverleaf

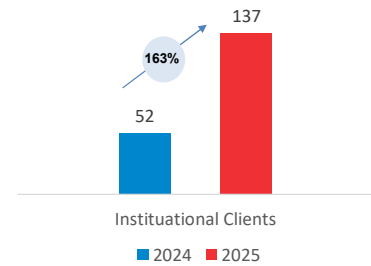
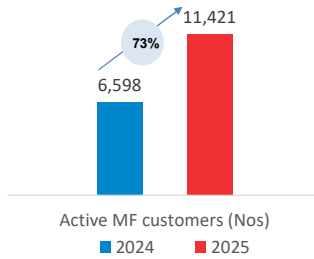
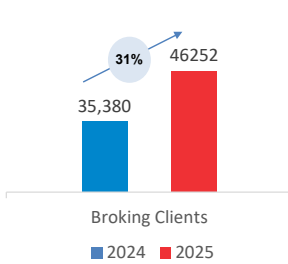


- Incorporation of Silverleaf Securities Research Private Limited as a new subsidiary
- To leverage the HFT Capabilities and expand our proprietary trading into the international market.

Operational Highlights FY25



Broking & MF Segment



NBFC Business



19
New Branches

Investment Banking



06
SME IPO's in FY25



Raised of
Rs **231.50** crores
in FY25

COMPANY

Overview



Growing Financial Services Conglomerate



Standalone Business

 <p>Broking in Equity, F&O, Commodities and Currency segment</p>	 <p>Prop Trading</p>	 <p>Mutual Funds distribution</p>	 <p>Research</p>	 <p>Depository Participant</p>
---	---	--	---	---

Business in Subsidiaries

 <p>Equity Trading</p>	 <p>Insurance Broking</p>	 <p>NBFC</p>	 <p>Investment banking</p>	 <p>Algo Trading platform</p>
---	--	---	---	--

Entities

<p>Share India Algoplus Pvt. Ltd. Share India Global Pte. Ltd. Share India Securities (IFSC) Pvt. Ltd. Total Securities (IFSC) Pvt. Ltd. Silverleaf Securities Research Pvt Ltd</p>	<p>Share India Insurance Brokers Pvt. Ltd.</p>	<p>Share India Fincap Pvt. Ltd.</p>	<p>Share India Capital Services Pvt. Ltd.</p>	<p>Algowire Trading Technologies Pvt. Ltd. uTrade Solutions Pvt. Ltd.</p>
---	--	-------------------------------------	---	---

Share India – At a Glance – FY25



Share India Securities Ltd. was founded in 1994 and is headquartered at Noida, Uttar Pradesh, India.



It is a prominent, technology-driven financial services company in India, renowned for its expertise in algorithmic trading and a broad spectrum of investment solutions.



Stands as a diversified financial conglomerate with a strong emphasis on technology and innovation.



With a network of 280 branches and franchises across 16 states, Share India has established a strong footprint across India, providing accessible financial services to a broad clientele



30+

Years of Trust



11

Subsidiaries



4,456

Employees



200+

In house tech experts



₹ 2,334 Cr

Network



280

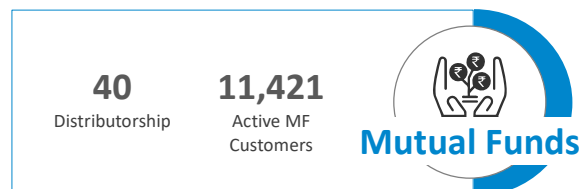
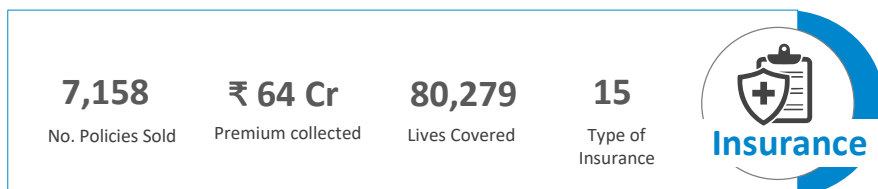
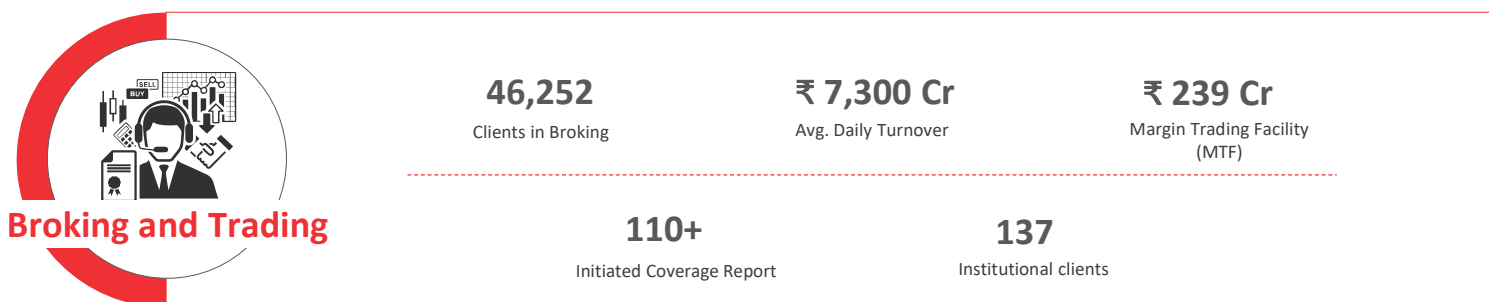
Branches & Franchises



37%

FY25 EBITDA Margin (%)

Business Segments (1/2)



Business Segments (2/2)



NBFC

52,550
NBFC Client Base

80
NBFC Branches

₹ 123 Cr
Net worth

₹ 260 Cr
NBFC Loan Book

5.96%
GNPA

4.95%
NNPA

17.49%
NIM

18
IPO Listings

12
Sectors Serviced

6
Geographies Serviced

Top Listings FY25
90%
Listing Gains

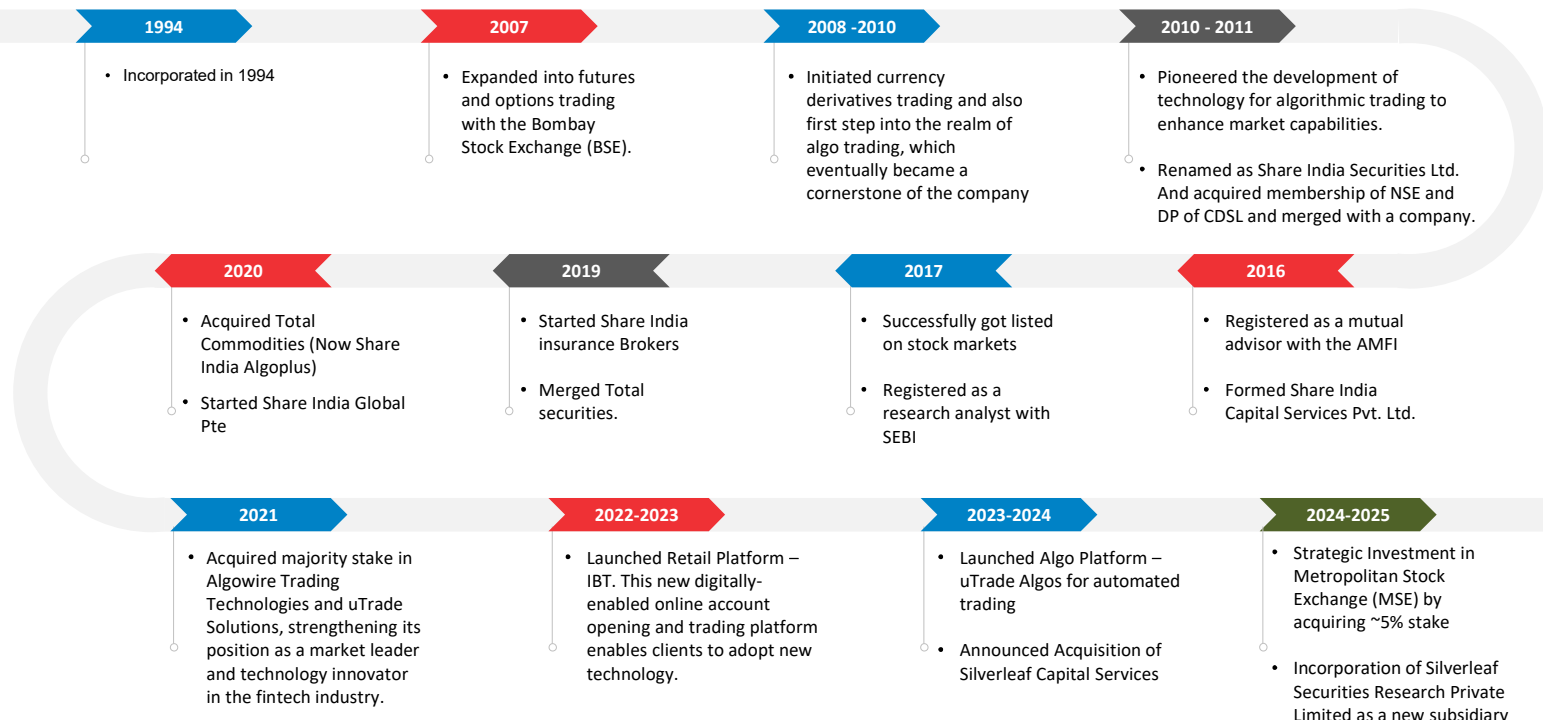
Apex Ecotech
Limited
421x
Subscription Times

VVIP Infratech
Limited
220x
Subscription Times



Merchant Banking

Journey



1994

- Incorporated in 1994

2007

- Expanded into futures and options trading with the Bombay Stock Exchange (BSE).

2008 -2010

- Initiated currency derivatives trading and also first step into the realm of algo trading, which eventually became a cornerstone of the company

2010 - 2011

- Pioneered the development of technology for algorithmic trading to enhance market capabilities.
- Renamed as Share India Securities Ltd. And acquired membership of NSE and DP of CDSL and merged with a company.

2020

- Acquired Total Commodities (Now Share India Algoplus)
- Started Share India Global Pte

2019

- Started Share India insurance Brokers
- Merged Total securities.

2017

- Successfully got listed on stock markets
- Registered as a research analyst with SEBI

2016

- Registered as a mutual advisor with the AMFI
- Formed Share India Capital Services Pvt. Ltd.

2021

- Acquired majority stake in Algowire Trading Technologies and uTrade Solutions, strengthening its position as a market leader and technology innovator in the fintech industry.

2022-2023

- Launched Retail Platform – IBT. This new digitally-enabled online account opening and trading platform enables clients to adopt new technology.

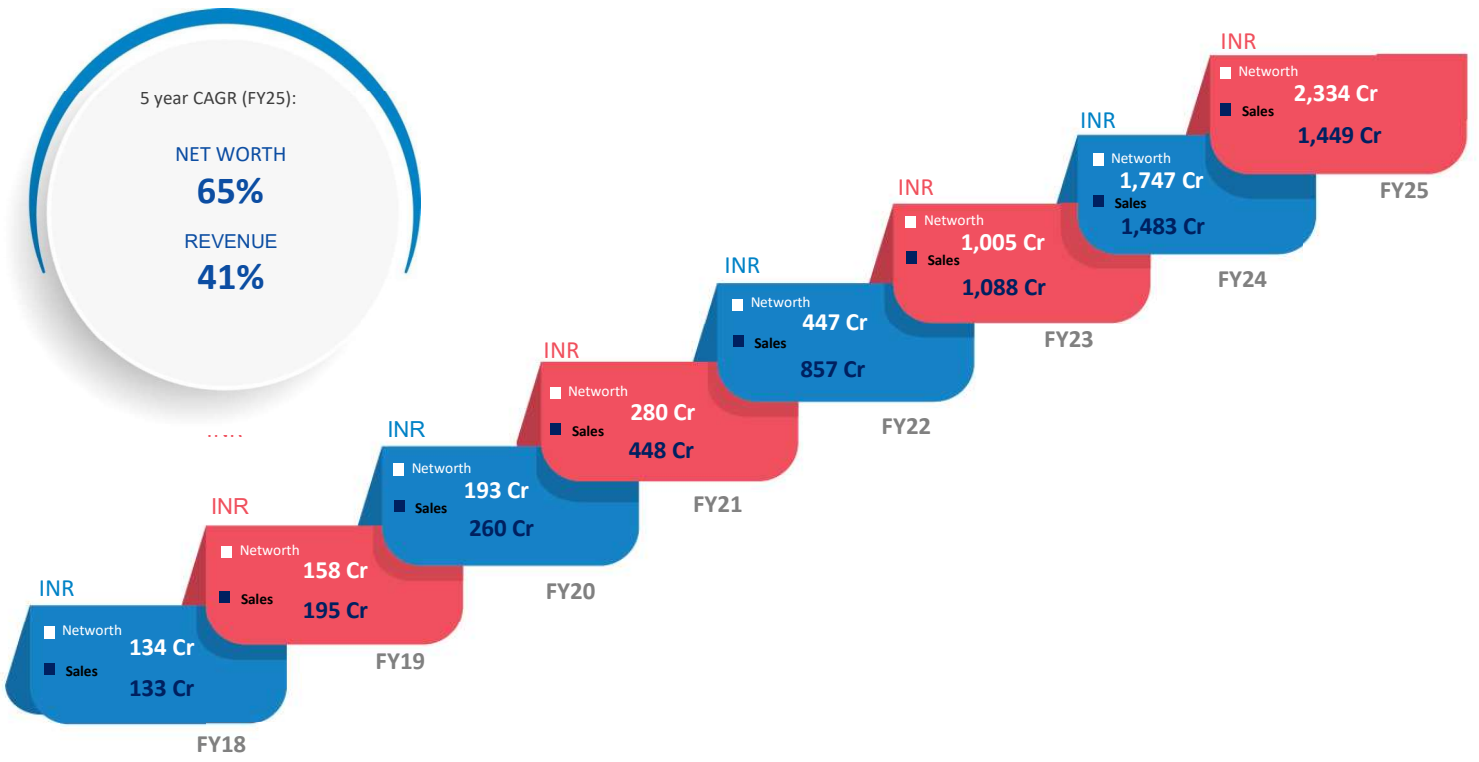
2023-2024

- Launched Algo Platform – uTrade Algos for automated trading
- Announced Acquisition of Silverleaf Capital Services

2024-2025

- Strategic Investment in Metropolitan Stock Exchange (MSE) by acquiring ~5% stake
- Incorporation of Silverleaf Securities Research Private Limited as a new subsidiary

Growth Trajectory



Business

Overview



Reliable Trading Platform

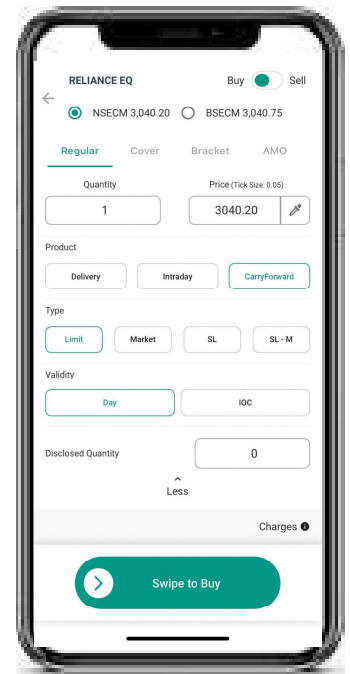
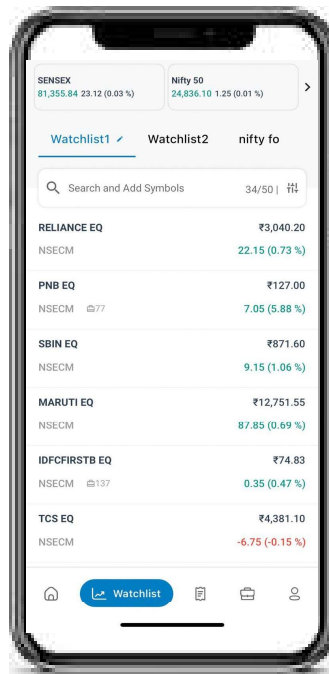


Versatile Trading Features: Adapting to Your Strategy

Rest API
-REST based Trading API. Our REST API's will help you to develop your own trading, Using our REST API you can execute orders in real time, monitor your positions, manage your portfolio and much more.

Trading View Chart
-Seamlessly track market trends with our integrated Trading View charts—powerful, real-time, and built for smart trading.

Enhanced UI/UX
-Optimized UI/UX to streamline your trading journey with faster load times, intuitive controls, and a clean, modern look



uTrade Algos: Algo Trading that is modern, reliable and effortless!



Unlock Your Trading Potential: Discover uTrade Algos' Unique Offerings

Evolving Strategy Library – Market Mover & Shifting Master:

-Introduced new strategies that adapt to changing market dynamics, reinforcing our commitment to innovation and responsiveness.

Slippage feature in Backtesting:

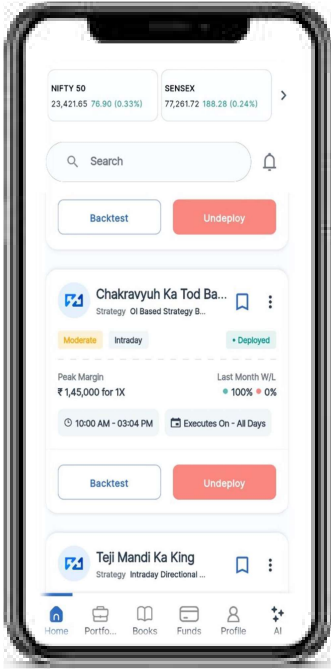
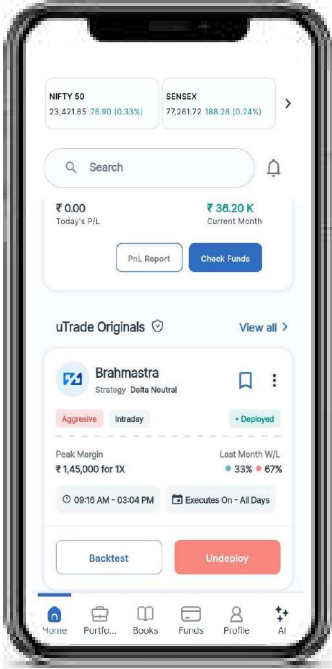
-Incorporates slippage to mimic real-world order fills, ensuring more accurate strategy performance analysis.

Enhanced Strategy Builder – SL/TP in Points & Required Margin Display:

-Introduced key features to simplify setup and improve clarity, reducing manual effort and aiding in informed decision-making.

Carryforward Feature – Extended Position Management:

-Enables users to seamlessly carry forward positions, offering greater flexibility in strategy execution.

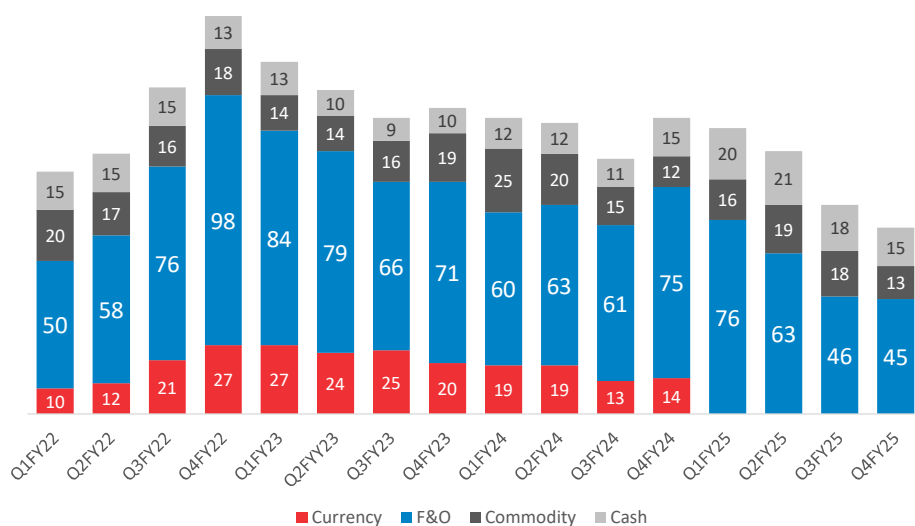


Boosting ADTO And Diversifying Across Ultra HNIs And Institutions



Share India
You generate, we multiply

Avg Daily Turnover (₹ Bn)



Segment	Market Share
NSE	
NSE - CM	1.4%
NSE - Futures	1.6%
NSE - Options	2.4%
BSE	
BSE - CM	1.3%
BSE - Options	5.8%
NCDEX MCX	
MCX - Options*	1.7%
MCX - Futures*	4.1%
NCDEX - Futures	19.3%

ADTO : Average Daily Turnover

*Commodity market share earlier was reported as notional data figures. Going ahead, we have bifurcated commodity data segment wise. Commodity option market share is based on premium turnover.

Consolidated Financials

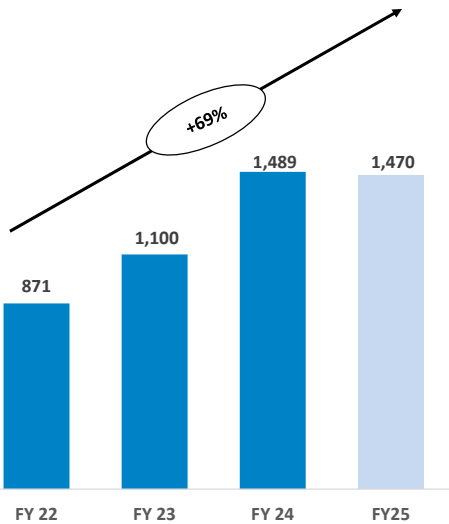
Overview



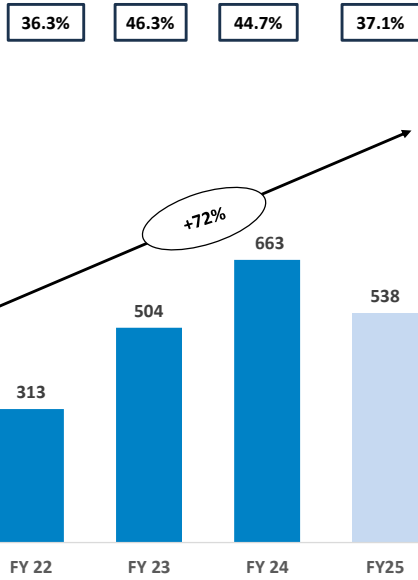
Key Financial Highlights



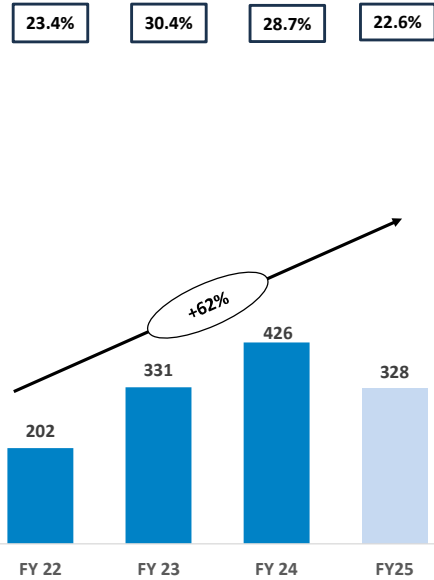
Total Income (₹ Cr)



EBITDA (₹ Cr) & EBITDA Margin



PAT (₹ Cr) & PAT Margin



Balance Sheet



Particulars (In ₹ Cr)	FY25	FY24	FY23
Liabilities			
Financial Liabilities			
Trade and Other Payables	413.3	359.3	349.5
Borrowings	486.5	386.9	192.1
Other Financial Liabilities	506.0	327.0	261.7
Non-Financial Liabilities			
Current & Def Tax (Net)	5.7	9.1	3.0
Provisions	7.5	9.5	5.8
Other Non-financial Liabilities	12.6	15.4	8.3
Total Liabilities	1,431.6	1,107.2	820.3
Net Worth	2,334.0	1,746.8	1,005.3
Non-Controlling Interest	14.9	14.0	13.2
Total Liabilities & Equity	3,780.5	2,868.1	1,838.8

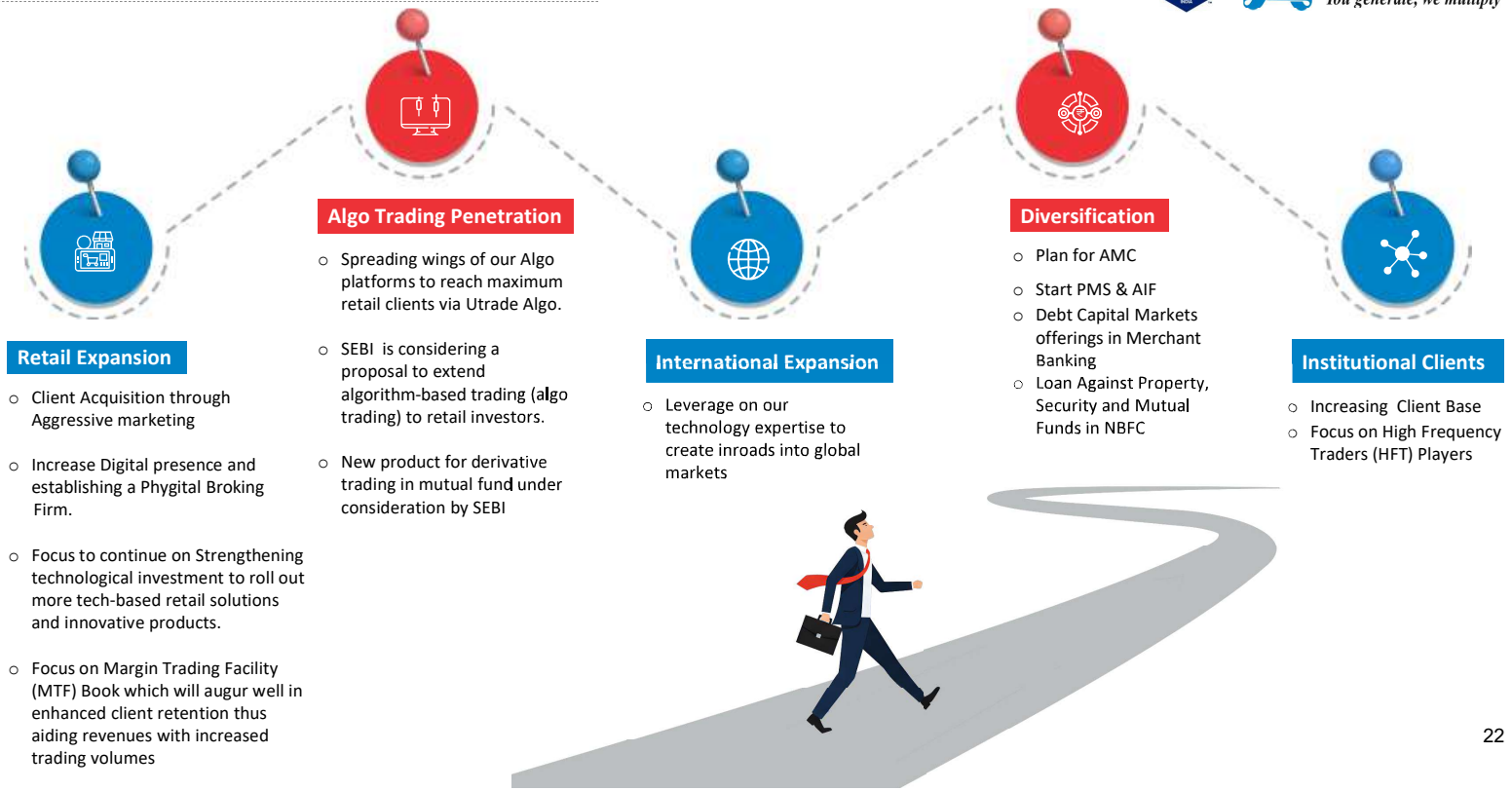
Particulars (In ₹ Cr)	FY25	FY24	FY23
Assets			
Financial Assets			
Cash & Cash Equivalents	2,459.8	2,018.5	1,403.2
Trade & Other Receivables	33.7	14.2	37.8
Loans	526.1	341.6	164.6
Investments	354.5	149.1	6.1
Other Financial Assets	276.0	232.6	139.2
Non-financial Assets			
Fixed Assets	71.8	72.3	63.0
Current & Def. Tax (Net)	15.9	10.2	6.2
Other Non-Financial Assets	42.7	29.6	18.7
Total Assets	3,780.5	2,868.1	1,838.8

Outlook

Ahead



Mapping Our Path Ahead



Key Growth Drivers



Share India
You generate, we multiply

01
Fee-based businesses :
Along with this business and investment products over the next five years.

02
Retail segment :
Strategic shift towards focusing on the retail segment over the past two years. One key initiative was the introduction of Margin Trading Facility (MTF) services for our clients, which generated significant demand and drove growth.

03
Wealth management :
We are preparing to launch a wealth management company, which will focus on offering investment products such as AIF and PMS, which are not currently part of Share India's offerings, aiming to diversify and strengthen our service offerings in this segment.

04
New Branches :
We have recently established branches in key cities and are using these locations as hubs to serve nearby tier II and tier III cities, where we are seeing strong demand

05
Institutional Business :
Successfully empanelling 137 institutions over the past two years.

06
Digital Business :
With a particular emphasis on uTrade Algo

07
Merchant Banking :
Focusing on merchant banking by assisting companies in getting listed on the SME platform and Main Board, which generated strong revenue

Annexures

Management & Awards



Management Team



Mr. Parveen Gupta
Chairman and
Managing Director



Mr. Kamlesh Vadilal Shah
Managing
Director



Mr. Sachin Gupta
CEO & Whole
Time Director



Mr. Vijay Vora
Whole
Time Director



Mr. Rajesh Gupta
Director



Mr. Suresh Arora
Whole
Time Director



Mr. Abhinav Gupta
President
Capital Markets & Products



Mr. Kunal Nandwani
Director
Utrade



Mr. Bhavya Arnav
Director
Algowire



Mr. Vijay Rana
CFO



Mr. Vikas Aggarwal
Company Secretary &
Compliance Officer



Mr. Ajay Patel
CEO
Share India Insurance

Thank You



COMPANY



Share India Securities Limited
CIN: L67120GJ1994PLC115132
Email: abhinav@shareindia.com

Website: www.shareindia.com

INVESTOR RELATIONS ADVISORS



Adfactors Investor Relations

Ms. Samruddhi Bane
+91 9619624264
Samruddhi.bane@adfactorspr.com

Mr. Amit Sharma
+91 9867726686
amit.sharma@adfactorspr.com

