



Letter No:KEPL/CO/26-27/022

Date: 26th May 2026

To,
The Manager,
The Listing Department,
National Stock Exchange of India Limited
Exchange Plaza, 5th Floor,
Plot no. C/I, G Block,
Bandra - Kurla Complex,
Bandra(E), Mumbai - 400 051.

SYMBOL: KONSTELEC

Sub: Intimation of Investor Presentation.

Dear Sir/Madam,

Pursuant to Regulation 30 of the SEBI (Listing Obligations and Disclosure Requirements) Regulations, 2015, please find enclosed Investor Presentation with respect to the Financial Results for half year and Financial Year ended March 31st 2026.

This Disclosure will also be hosted on the company website at www.konstelec.com

All the future communications to investors shall be limited to the contents of this Presentation only.

We request you to take note of the same.

Thanking you,

Yours faithfully,
For, Konstelec Engineers Limited.

Shatabdi Sudam Salve
Company Secretary and Compliance Officer
Membership No: A66195

Date: 26.05.2026
Place: Mumbai

Encl: Investor Presentation



Konstelec Engineers Ltd.

INNOVATE | ENGINEER | DELIVER

INVESTOR PRESENTATION

| MAY 2026



Safe Harbour



This presentation and the accompanying slides (the “Presentation”), which have been prepared by Konstelec Engineers Limited (The “Company”) solely for information purposes and do not constitute any offer, recommendation or invitation to purchase or subscribe for any securities, and shall not form the basis or be relied on in connection with any contract or binding commitment what so ever. No offering of securities of the Company will be made except by means of a statutory offering document containing detailed information about the Company. This Presentation has been prepared by the Company based on information and data which the Company considers reliable, but the Company makes no representation or warranty, express or implied, whatsoever, and no reliance shall be placed on, the truth, accuracy, completeness, fairness and reasonableness of the contents of this Presentation. This Presentation may not be all inclusive and may not contain all of the information that you may consider material. Any liability in respect of the contents of, or any omission from, this Presentation is expressly excluded. Certain matters discussed in this Presentation may contain statements regarding the Company’s market opportunity and business prospects that are individually and collectively forward-looking statements. Such forward-looking statements are not guarantee of future performance and are subject to known and unknown risks, uncertainties and assumptions that are difficult to predict. These risks and uncertainties include, but are not limited to, the performance of the Indian economy and of the economies of various international markets, the performance of the industry in India and worldwide, competition, the company’s ability to successfully implement its strategy, the Company’s future levels of growth and expansion, technological implementation, changes and advancements, changes in revenue, income or cash flows, the Company’s market preferences and its exposure to market risks, as well as other risks. The Company’s actual results, levels of activity, performance or achievements could differ materially and adversely from results expressed in or implied by this Presentation. The Company assumes no obligation to update any forward-looking information contained in this Presentation. Any forward-looking statements and projections made by third parties included in this Presentation are not adopted by the Company and the Company is not responsible for such third party statements and projections.

About Konstelec Engineers

Engineering | Procurement | Construction



KEPL

Engineering Solutions.
Building Tomorrows.

Konstelec Engineers Limited delivers **integrated electrical engineering and EPC solutions** across the complete project lifecycle, from concept and design to execution, commissioning, and maintenance support.

The company specializes in **electrical, instrumentation, and automation solutions** for industrial and infrastructure sectors, enabling reliable, high-performance operations through turnkey project execution, technical expertise, and a strong focus on quality, safety, and operational excellence.



What We Do

We deliver innovative, safe and sustainable EPC solutions tailored to complex industrial requirements.



Our Strength

Skilled teams, strong execution capabilities, dedicated equipment bank and a client-centric approach.



Industries We Serve

Oil & Gas, Refinery, Steel, Cement, Pharmaceuticals, Textile, Hotels, FMCG, Residential & Commercial Complexes, Specialty Chemicals and more.



Our Focus

High value projects. Newer markets. Excellence in execution.



OUR VISION

To become a global leader in the EPC industry pioneering comprehensive and quality solutions in Electrical, Instrumentation, and Automation systems.

Financial & Operational Highlights

Performance snapshot across key metrics



Financial Performance: Growth with Discipline

REVENUE

105.56 Cr.

(03.38+% YoY)

Execution-led across diversified sectors

EBITDA

12.41 Cr.

(144.44+% YoY)

Margin expansion reflecting execution efficiency

PAT

5.75 Cr.

(465.38+% YoY)

Solid bottom-line expansion YoY

DEBT/EQUITY

0.85

(FY26)

Healthy leverage profile supporting sustainable growth

WCC Days

163 days

(FY26)

Efficient working capital management

All figures based on H2FY26 internal audited statements. Growth reflects YoY comparison to H2FY25.

Operational Strength: Execution at Scale

YEARS OF INCEPTION

30+ Years

Established execution track record across EPC projects

PROJECT EXECUTED

200+

Delivered across multiple sectors

ORDER BOOK

₹ 550+ Cr

(As of 22 May 2026)
Strong revenue visibility

MANPOWER STRENGTH

900+

Skilled workforce enabling scalable execution capabilities

Our Business Segment

Engineering projects at scale



What does it take to deliver complex projects at scale, on time and with precision?

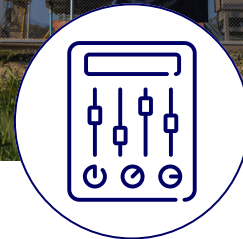
Konstelec Engineers Ltd. delivers integrated electrical, instrumentation, automation, and maintenance solutions across industrial and infrastructure projects. With strong execution capabilities and technical expertise, the company undertakes end-to-end project delivery from engineering and installation to commissioning and long-term operational support.

Our Core Capabilities



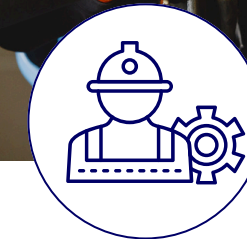
Electrical EPC Services

Execution of end-to-end electrical infrastructure projects including substations, HT/LT systems, cabling networks, and industrial electrification solutions.



Instrumentation & Automation

Integrated automation and control solutions including PLC, SCADA, instrumentation, calibration, and process automation for industrial applications.



Operations & Maintenance

Comprehensive maintenance and operational support services focused on improving system reliability, efficiency, uptime, and preventive maintenance execution.

ELECTRICAL EPC SERVICES

Engineering projects at scale



Konstelec executes complete electrical infrastructure projects delivering safe, reliable and efficient power systems for industrial and infrastructure applications.

SCOPE OF WORK



HT/LT ELECTRICAL INSTALLATIONS

Design, supply, installation and commissioning of HT and LT systems as per applicable standards and norms.



SUBSTATIONS AND SWITCHYARDS

Erection and commissioning of substations and switchyards up to 220kV and beyond.



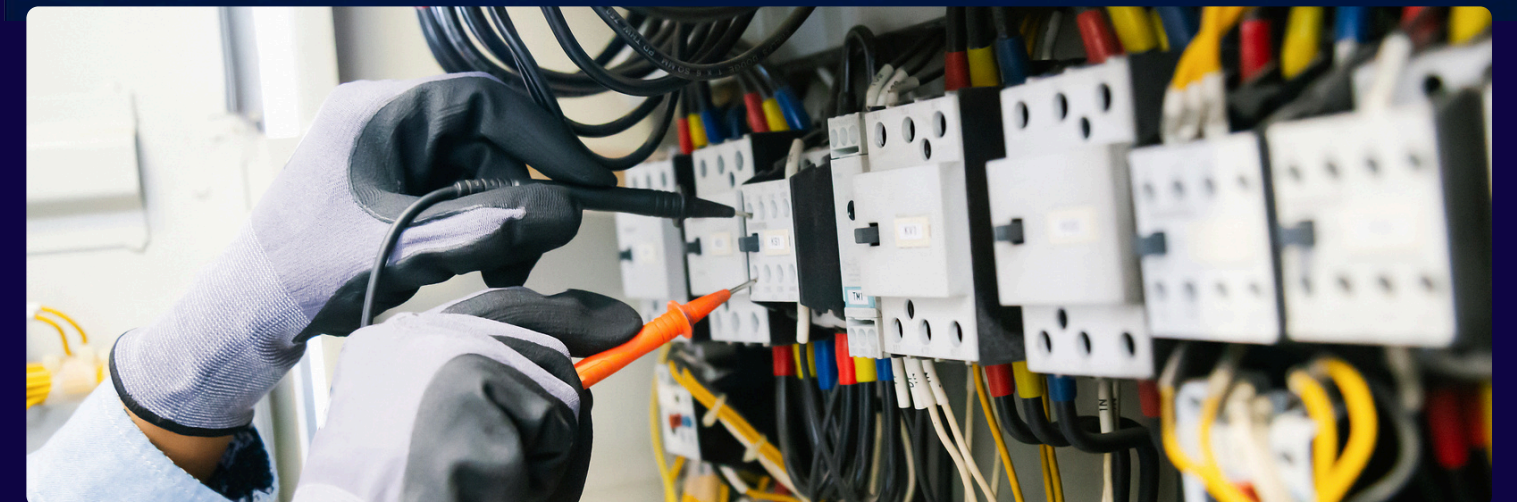
CABLING & POWER DISTRIBUTION SYSTEMS

Installation of cable trays, busducts, power cables and associated distribution systems.



INDUSTRIAL ELECTRIFICATION

Providing end-to-end electrification solutions for industrial plants, facilities and utilities.



INSTRUMENTATION & AUTOMATION



OPERATIONS & MAINTENANCE

OUR OFFERINGS



PLC & SCADA SYSTEMS

Advanced control and monitoring solutions for seamless operations.



PROCESS AUTOMATION

Improving process efficiency, accuracy and productivity through automation.



CONTROL PANEL INTEGRATION

Design, engineering and integration of customized control panels.



INSTRUMENT CALIBRATION

Ensuring accuracy and reliability through precise calibration.



ROUTINE MAINTENANCE

Scheduled inspections and servicing to ensure smooth and reliable operations.



BREAKDOWN SUPPORT

Rapid response and corrective actions to minimize equipment downtime.



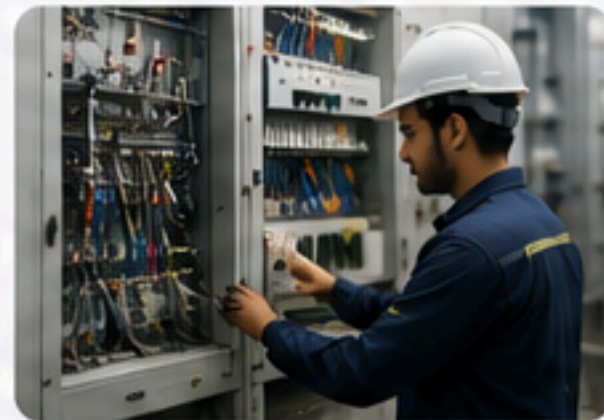
PREVENTIVE MAINTENANCE

Proactive maintenance strategies to prevent failures and extend equipment life.



SYSTEM OPTIMIZATION

Continuous monitoring and improvements for enhanced performance and efficiency.



360 EPC Capabilities

Powering projects with integrated execution capabilities



What Makes Us Different

Built on Trust. Driven by Execution.



02

ASSET-LIGHT MODEL

Scalable execution with efficient capital deployment.



04

END-TO-END EPC CAPABILITIES

Integrated execution from engineering to commissioning.



06

EXPERIENCED TECHNICAL LEADERSHIP

Execution-focused leadership backed by domain expertise.



01

BLUE-CHIP CLIENTELE

Trusted by leading industrial and infrastructure groups.



03

DIVERSIFIED SECTOR PRESENCE

Serving multiple industrial and infrastructure segments.



05

STRONG ORDER VISIBILITY

Healthy order pipeline supporting long-term growth.



07

CONSISTENT EXECUTION & DELIVERY CAPABILITY

Proven track record of timely and quality project delivery.



OUR DIFFERENCE

What Makes Us Different

Built on Trust. Driven by Execution.



With growing investments across industrial infrastructure, power systems, and process industries, **Konstelec is strategically positioned to benefit from rising demand for reliable and execution-focused EPC solutions.**

Konstelec combines engineering expertise, execution capability, and automation solutions to serve India's growing industrial infrastructure demand.

EXECUTION

Timely delivery backed by engineering precision and operational discipline.

EXPERTISE

Integrated electrical, instrumentation and automation capabilities.

GROWTH

Positioned to benefit from India's expanding industrial infrastructure opportunity.

Sectors We Cater To

End to End EPC Capabilities



Hydrocarbon/ Oil & Gas



Power



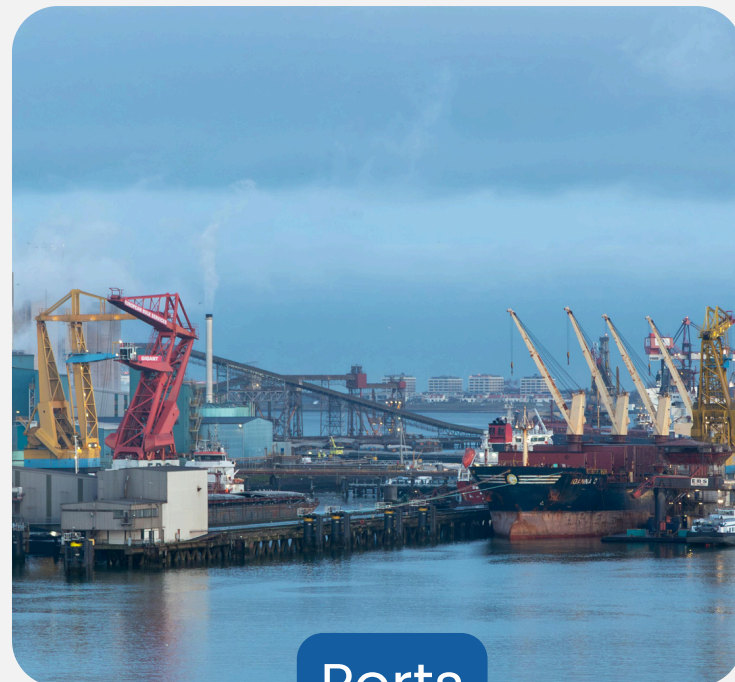
Steel



Cement



Substation/ SwitchYard



Ports



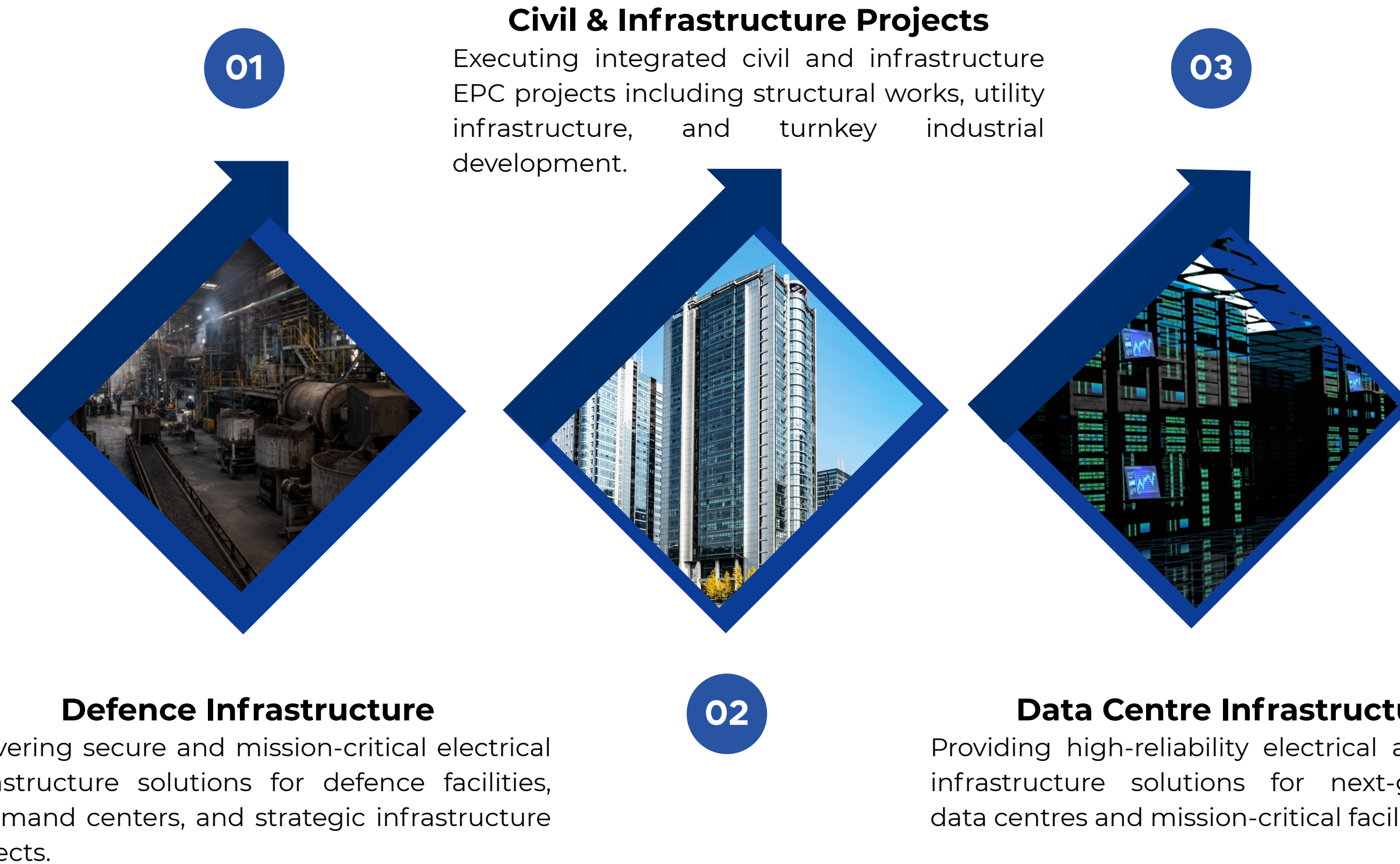
Paints



Mining

Strategic Growth Verticals

Expanding capabilities across mission-critical infrastructure segments



Emerging Infrastructure Opportunities

Building scalable EPC solutions across high-potential infrastructure verticals



DEFENCE INFRASTRUCTURE

Specialized EPC solutions for mission-critical defence and strategic infrastructure facilities.



Secure electrical distribution systems



High-reliability backup power systems



Command & control infrastructure electrification



Underground cabling & protected infrastructure



Surveillance & security systems integration



Compliance with stringent safety & security standards



DATA CENTRE INFRASTRUCTURE

Integrated electrical infrastructure solutions for next-generation data centre facilities.



HT/LT power distribution systems



BMS & DCIM integration



UPS & DG backup integration



Redundant high-availability power architecture



Precision earthing & lightning protection



Energy-efficient infrastructure solutions

Positioned to capitalize on India's accelerating infrastructure and digital growth opportunities through high-value, margin-accretive EPC capabilities.

Way Forward

Building a Stronger, Sustainable & Profitable Future



Message From The Managing Director



Mr. Amish Shah
Managing Director

At Konstelec Engineers Limited, FY26 has been a year defined by resilience, operational discipline, and strategic progress. Despite industry-wide challenges and execution complexities across the EPC landscape, we remained focused on strengthening our operational efficiencies, improving project execution, and enhancing profitability. These efforts started reflecting meaningfully in the second half of the year, where we witnessed a notable improvement in performance and margins, reinforcing our confidence in the sustainability of our business model.

As we move ahead, our focus remains firmly on replicating and strengthening this momentum. **We believe the opportunities emerging across Data Centres, Defence infrastructure, Renewable Energy, Water Treatment (STP, WTP), Civil and Industrial projects, along with the accelerating electrification of Railways and Metro systems, position Konstelec strongly for the next phase of growth.** India's infrastructure transformation, supported by rapid urbanization, digital expansion, industrial development, and government-led investments, continues to create a robust demand environment for integrated EPC capabilities.

With our diversified expertise spanning Electrical, Instrumentation, Automation, Civil, and mission-critical infrastructure, we are well-positioned to aggressively capitalize on these opportunities. Our strategy is centered on expanding our execution capabilities, deepening customer relationships, improving operational productivity, and leveraging technology-driven solutions to enhance project delivery and profitability.

We also remain deeply committed to creating long-term value for our shareholders. Our strategic focus over the next three years remains centered on significantly improving profitability and strengthening the overall quality of earnings. We aim to expand our EBITDA margins to the mid-teen range from the current levels, while also targeting a doubling of PAT margins through better project mix, execution efficiencies, and productivity improvements. Simultaneously, we remain focused on deleveraging our balance sheet, improving return ratios such as ROCE, and maintaining a strong and diversified order book to support sustainable long-term growth.

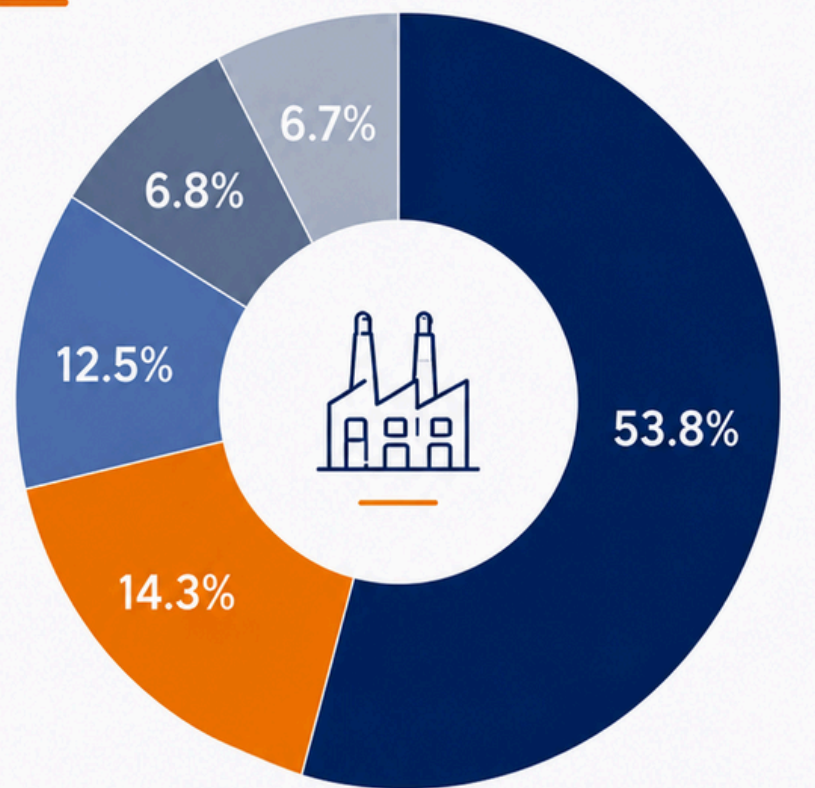
At Konstelec, we are not just building projects, we are building a future-ready organization capable of delivering sustainable growth, operational excellence, and long-term stakeholder value.

Order Book Details

Diversified across Industries and Geographies



ORDER BOOK INDUSTRY WISE



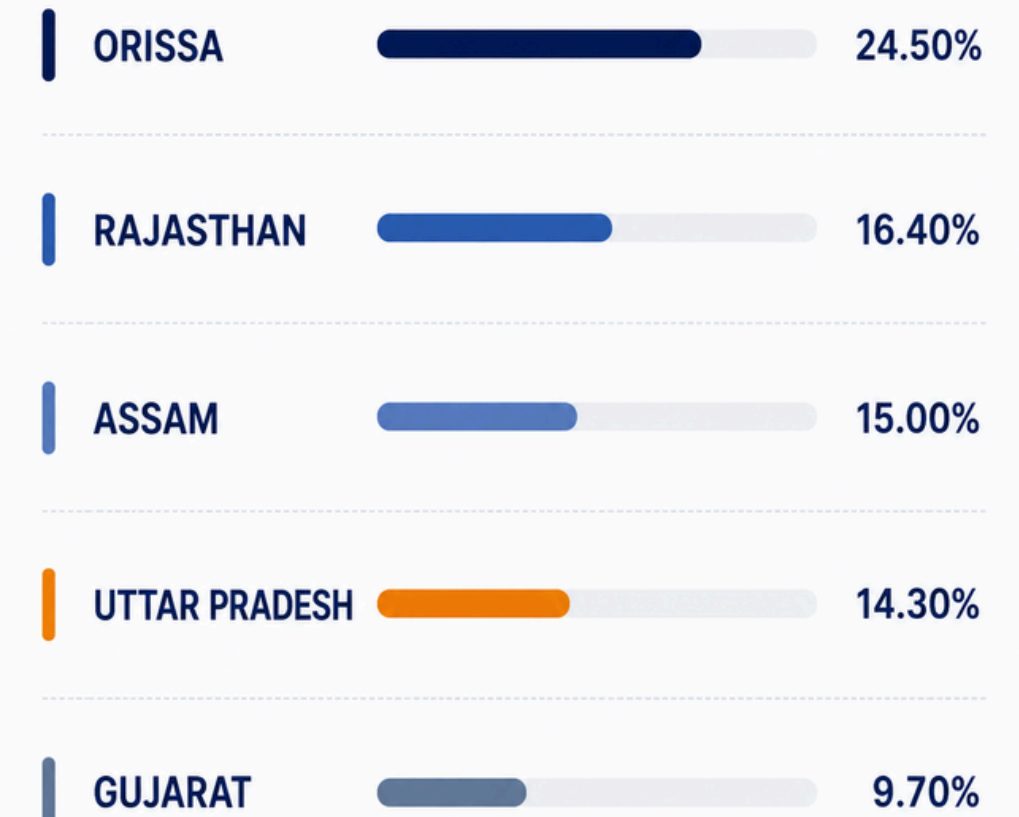
Refinery	53.8%
Defence	14.3%
Transmission & Distribution	12.5%
Steel	6.8%
Mining	6.7%

₹550
Crs.

TOTAL ORDER BOOK

As of 22nd May 2026

ORDER BOOK STATE WISE



Strong order visibility supported by diversified sector exposure, with project execution timelines spanning the next 18–24 months.

Our Clientele

Trusted by leading players across sectors



100+ Clients

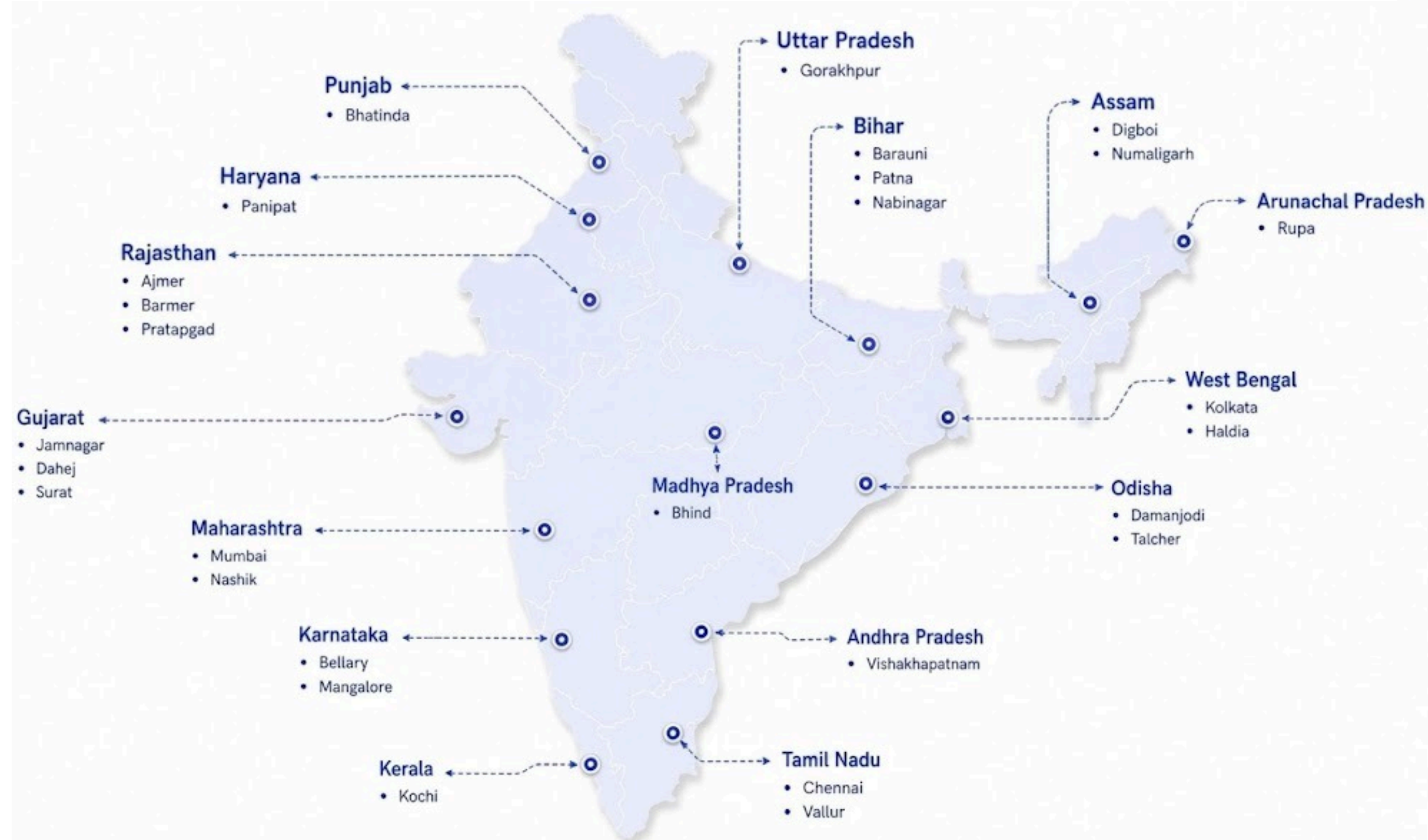
₹1,000+ Cr. Project Executed
In last 5 years

First Clientele in Defence

	OIL & GAS											
	POWER											
	INDUSTRIAL/ INFRA											
	STEEL/CEMENT/ METAL/MINING											
	EPC/ CONSULTANTS											
	INTERNATIONAL											

Our Presence

Pan India Presence. Strong Execution.



GLOBAL FOOTPRINT



Nigeria

Kingdom of Saudi Arabia



15+
States



100+
Locations



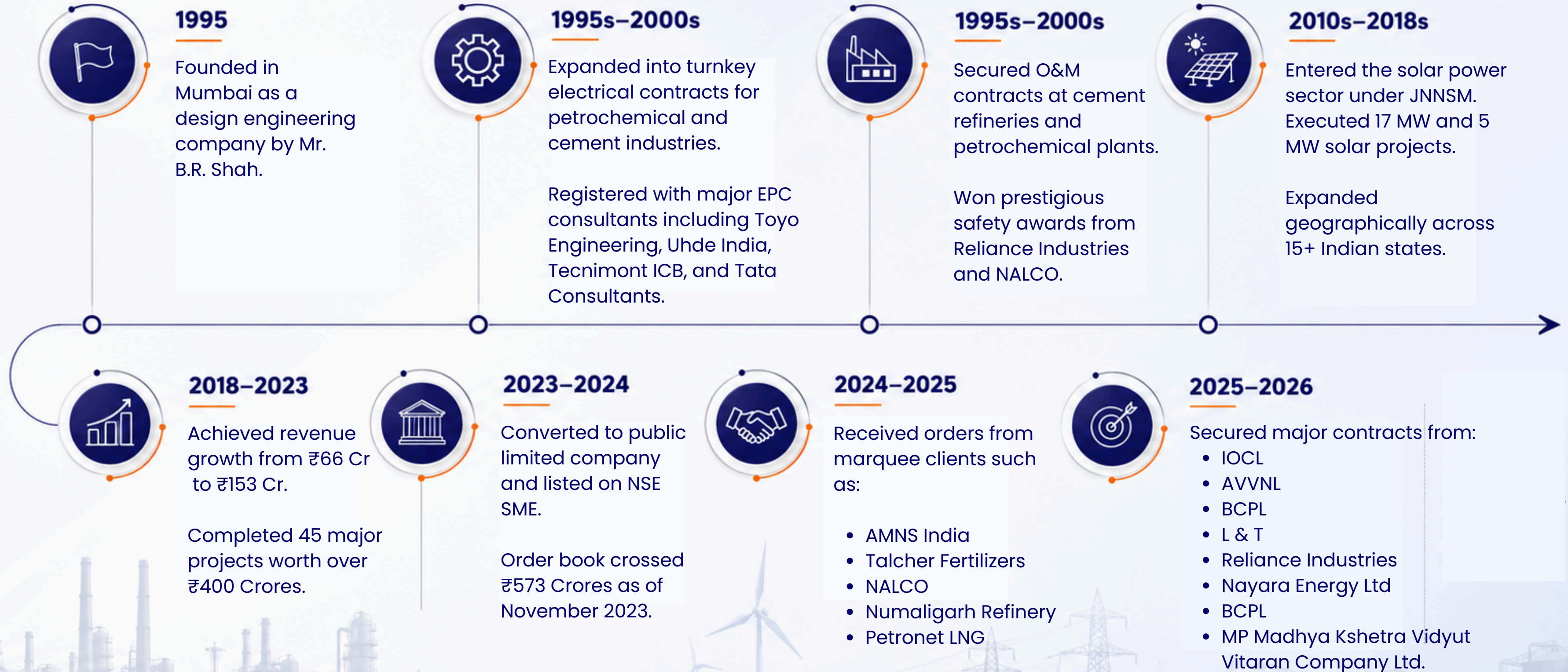
200+
Projects Executed



02
Countries

Engineering Growth Over Time

Evolution into a diversified EPC contractor



Leadership Team

Experienced promoter group driving long-term growth



Mr. Biharilal Shah
Chairman

He holds degree of B.E. (Electrical Engineering) from Shivaji University and Diploma in Fundamentals of Microprocessors & Microcomputers: Architecture, Software & Application from Indian Institute of Cybernetics.

He is having more than 45+ years of experience in the Engineering, Procurement, and Construction/Commissioning (EPC) of Electrical Works.



Mr. Amish Shah
Managing Director

He holds degree of B.E. (Electronics Engineering) from University of Mumbai and Master of Science (Electrical Engineering) from Syracuse University and Post Graduate Program in Management (Family Managed Business) from S.P Jain Institute of Management and Research.

He is having more than 16 years of experience in the EPC of Electrical Works.



Mr. Jigar Shah
CEO & Director

He holds degree of Bachelor of Engineering in Chemical Engineering from Visveswaraiah Technological University, Belgaum, Karnataka and Master of Business Administration in Agri Business from Symbiosis International University, Pune.

He is having more than 10 years of experience in Marketing and Project management.

Key Management Personnel

Leadership Backed by Technical & Operational Expertise



CA Hardik Sarvaiya
Chief Financial Officer



Mr. Praveen Patel
Assoc. Director Projects



Mr. B Patro
General Manager Project



Mr. Narendra N.
Head Business Development



Mrs. Molly Antony
HOD Accounts & Finance

Profit And Loss Statement

FY26 Earnings and Profitability Overview



₹ in Crores

	H2FY26	H2FY25	YoY %	FY26	FY25	YoY %
Revenue from Operations	105.56	109.26	(3.38)%	210.38	193.71	8.61%
COGS	30.73	47.82	-	72.62	74.38	-
Employee Expenses	17.53	15.29	-	32.45	32.56	-
Other Expenses	44.91	41.03	-	85.84	73.62	-
EBITDA	12.41	5.13	144.44%	19.67	13.15	49.58%
EBITDA %	11.76	4.70	706 bps	9.35	6.79	256 bps
Other Income	1.22	1.04	-	2.33	1.95	-
Depreciation and Amortization	1.07	0.59	-	1.77	1.09	-
Finance Cost	5.37	3.97	-	9.95	7.31	-
PBT	7.19	1.61	354.66%	10.08	6.69	50.67%
Tax Expenses	1.43	0.57	-	2.79	1.93	-
PAT from Operations	5.75	1.04	465.38%	7.29	4.75	53.47%
PAT Margin %	5.45	0.95	450 bps	3.56	2.21	135 bps
Diluted EPS (in Rs.)	3.81	0.69	-	4.83	3.14	-

Balance Sheet Statement

Financial Position and Capital Structure



₹ in Crores

ASSETS	FY26	FY25
Property, Plant & Equipment	14.35	10.27
Other intangible assets	0.04	0.05
Capital Work In Progress	-	2.13
Deferred Tax Assets	0.01	(0.09)
Other Non-Current Assets	5.07	5.90
Total Non-Current Assets	20.37	18.59
Trade receivables	72.12	66.84
Cash and cash equivalents	26.37	21.21
Short term Loans and Advances	11.58	14.89
Other current assets	135.65	116.88
Total current assets	245.72	219.83
Total assets	266.09	238.42

EQUITY & LIABILITIES	FY26	FY25
Shareholder's Funds	105.97	98.69
Long Term Borrowings	8.51	4.33
Total Non-Current Liabilities	8.51	4.33
Short Term Borrowings	81.82	64.66
Outstanding Dues of MSMEs	4.28	7.25
Outstanding Dues of Creditors	31.01	34.54
Other Current Liabilities	30.39	25.39
Short Term Provision	4.09	3.57
Total Current Liabilities	151.61	135.41
Total Liabilities	266.09	238.42



Get in Touch

investors@konstelec.com



G12-14, 7th Floor- Commerce Centre,
Mumbai- 400034

Email : ir@merlincapital.co.in

Contact : [+91 81048 55515](tel:+918104855515)