



To,  
The Manager  
Listing Department,  
National Stock Exchange Limited,  
Exchange Plaza, C-1, Block G,  
Bandra Kurla Complex,  
Bandra (E), Mumbai – 400051

**Scrip Code:** DELAPLEX

**Subject:** Investor Presentation on Standalone and Consolidated Audited Financial Results for the Half Year and Year Ended March 31, 2026.

Dear Sir/Madam,

Pursuant to Regulation 30 of the SEBI (Listing Obligations and Disclosure Requirements) Regulations, 2015, please find enclosed herewith the Investor presentation to analysts/investors on the Standalone and Consolidated Audited Financial Results for the half year and year ended March 31, 2026.

This is for your information and record.

Kindly acknowledge the receipt of the same.

Thanking you,  
Yours faithfully,

**For DELAPLEX LIMITED**

**CS Manishraj Bhatt**  
**Company Secretary cum Compliance Officer**  
**Mem No: A63754**



**BUSINESS TECHNOLOGY CONSULTANCY AND SERVICES FIRM**

Enabling businesses to  
excel, adapt, and thrive.

**Investor Presentation**

June 2026



# Disclaimer

This document has been prepared for information purposes only and is not an offer or invitation or recommendation to buy or sell any securities of Delaplex Ltd ("Delaplex", "Company"), nor shall part, or all, of this document form the basis of, or be relied on in connection with, any contract or investment decision in relation to any securities of the Company. This document is strictly confidential and may not be copied, published, distributed or transmitted to any person, in whole or in part, by any medium or in any form for any purpose. The information in this document is being provided by the Company and is subject to change without notice. The Company relies on information obtained from sources believed to be reliable but does not guarantee its accuracy or completeness. This document contains statements about future events and expectations that are forward-looking statements. These statements typically contain words such as "expects" and "anticipates" and words of similar import.

Any statement in this document that is not a statement of historical fact is a forward-looking statement that involves known and unknown risks, uncertainties and other factors which may cause our actual results, performance or achievements to be materially different from any future results, performance or achievements expressed or implied by such forward-looking statements. None of the future projections, expectations, estimates or prospects in this document should be taken as forecasts or promises nor should they be taken as implying any indication, assurance or guarantee that the assumptions on which such future projections, expectations, estimates or prospects have been prepared are correct or exhaustive or, in the case of the assumptions, fully stated in the document. The Company assumes no obligations to update the forward-looking statements contained herein to reflect actual results, changes in assumptions or changes in factors affecting these statements. You acknowledge that you will be solely responsible for your own assessment of the market and the market position of the Company and that you will conduct your own analysis and be solely responsible for forming your own view of the potential future performance of the business of the Company

Contents of this document including information, statements, designs, graphics including customer logos and proprietary information may be classified as confidential & is for internal reference only, circulation of this document shall be strictly limited with prior written approval of the author.



## 1) Financial Highlights

- Management Comment
- Financial Highlights
- Key Historical Financial Highlights
- Financial Performance
- Balance Sheet Highlights



## 2) About Delaplex

- Company Overview
- Strengthening presence in North America
- How We Work
- Leadership Team
- Milestones
- Media Presence
- Growth Drivers and Strengths



## 3) Business Highlights & Growth

- IT Services Industry Overview
- Understanding the Data Centre Market
- Enterprise Delivery COE's
- Maturing In-house IP
- Software Development Service
- Enterprise Centers of Excellence
- Recent Developments and Growth Strategy
- Driving Innovation Through AI
- Delivering Solutions Across Sectors
- Delivering Impact Industry wide
- Driving Success through Collaborative Alliances
- Tech Stack



## 4) Outlook

- Way Ahead

# Financial Highlights

# Management Comment



**Nitin Sachdeva**

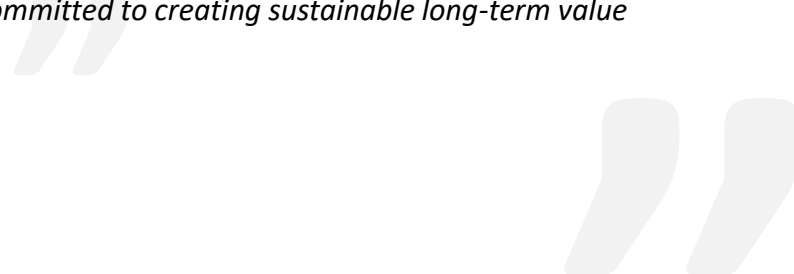
Managing Director Delaplex Limited

President Delaplex Inc,

*FY26 was a landmark year for Delaplex as we continued our evolution into a technology-led digital transformation partner with growing capabilities across AI, Data, Cloud, Supply Chain and Edge Infrastructure solutions. During the year, the Company reported consolidated revenue of ₹73.1 crore, EBITDA of ₹17.3 crore and PAT of ₹13.8 crore, reflecting the strength of our business model, disciplined execution and focus on profitability.*

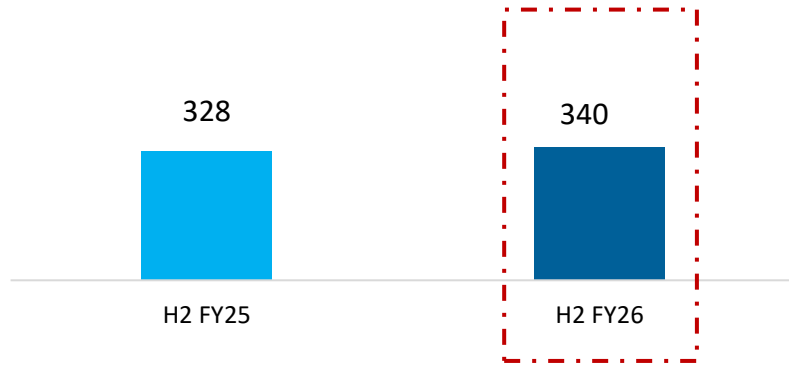
*We strengthened our international presence through the integration of Blueberry Systems and Celestia Crew Consultancy, enhancing our capabilities across healthcare, workforce management and enterprise consulting. We also achieved meaningful progress in our AI-led solutions and Micro Data Center (MDC) initiatives, while establishing a strategic partnership with BSNL to support next-generation edge computing infrastructure across India.*

*As organizations continue to accelerate investments in digital transformation, automation and data-driven decision making, Delaplex is well-positioned to capitalize on these opportunities through its differentiated service offerings, proprietary IP portfolio and global delivery capabilities. With a strong balance sheet, growing domestic revenue contribution of 38.7%, expanding client relationships and a robust opportunity pipeline, we remain committed to creating sustainable long-term value for all stakeholders*

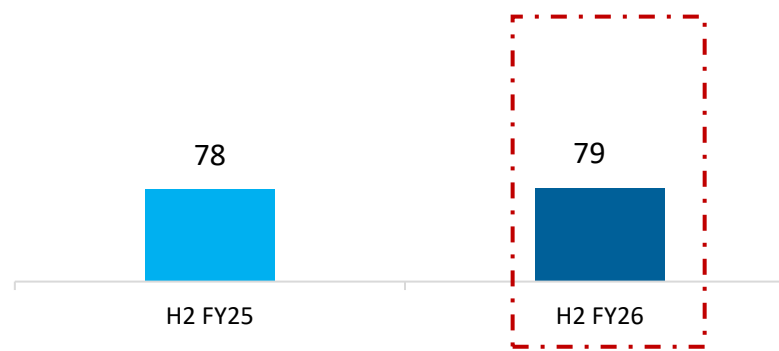


# Financial Highlights H2 FY26

Total Income (₹ Mn)



EBITDA (₹ Mn)



PBT (₹ Mn)



PAT (₹ Mn)



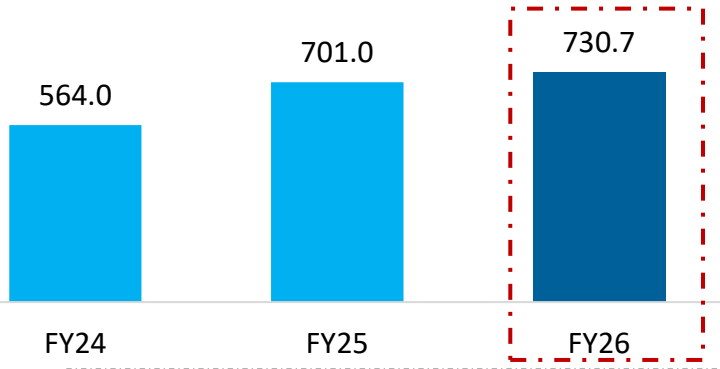
- FY26 total income increased by 3.66% YoY to ₹340.4 Mn from ₹328.4 Mn in H2 FY25.
  - Driven by synergies from Blueberry Systems & Celestia Crew
  - Launch of our Hyderabad-based strategic consulting division and
  - Early gains from BSNL-related initiatives.
- EBITDA grew 1.3% YoY to ₹79.4 Mn (vs ₹78.4 Mn in H2 FY25) caused by –
  - Cost optimizations ,
  - A stronger focus on high-margin AI-driven work, and
  - End-to-end solution offerings.
- PAT was lower by 0.8%, to ₹57.1 Mn (from ₹57.6 Mn in H2 FY25), with PAT margin decline of 76 bps to 16.8%, due to –
  - Sales Team Expansions across APAC & Increased Sales efforts
  - New Business lines getting established

\*Segmental breakup for H1FY26

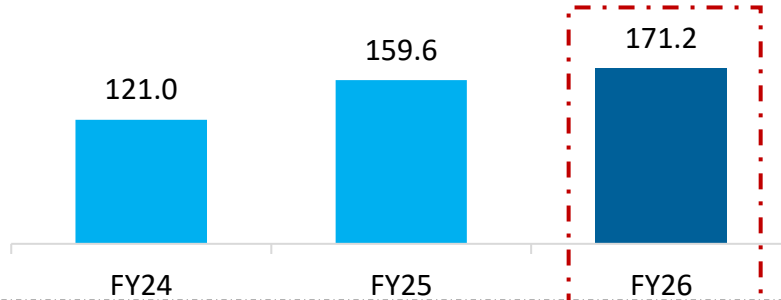
# Key Historical Financial Highlights

Domestic sales contributed 38.7% to total revenue, with a strong 49.3% YoY growth in FY26, reflecting our focus on expanding presence in the domestic market.

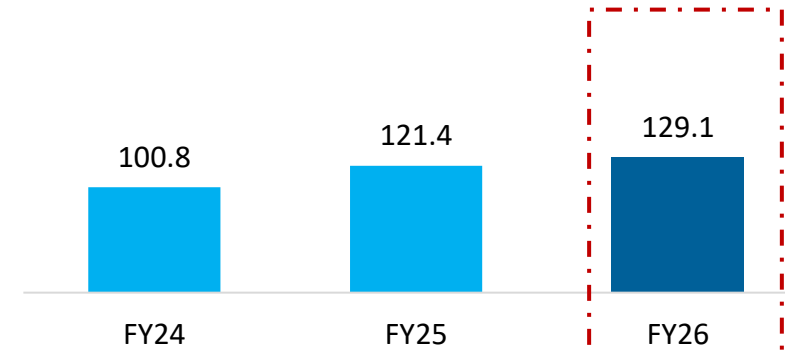
Total Income (₹ Mn)



EBITDA (₹ Mn)



PAT (₹ Mn)



- Total Income stood at ₹730.7 Mn in FY26 as against ₹701.0 Mn in FY25, synergies between our group companies and expansion in local markets
- EBITDA for FY26 was ₹171.2 Mn as against ₹159.6 Mn for FY25, supported by enhanced operational efficiency, cross-skilling, and cost optimization.
- FY26 PAT was ₹129.1 Mn as against PAT of ₹121.4 Mn in FY25.

# Financial Performance

₹ Mn

Particulars	H2 FY26	H1 FY26	H2 FY25	FY26	FY25	Y-o-Y
<b>Total Income</b>	<b>340.4</b>	<b>390.3</b>	<b>328.4</b>	<b>730.7</b>	<b>701.0</b>	<b>4.2%</b>
Total Expenses	261.0	298.51	250.0	559.5	541.4	
<b>EBITDA</b>	<b>79.4</b>	<b>91.8</b>	<b>78.4</b>	<b>171.2</b>	<b>159.6</b>	<b>7.2%</b>
<b>EBITDA Margin (%)</b>	<b>23.3%</b>	<b>23.5%</b>	<b>23.9%</b>	<b>23.4%</b>	<b>22.8%</b>	<b>66 bps</b>
Depreciation	3.8	2.5	1.7	6.3	3.6	
Finance costs	1.1	0.4	0.2	1.5	0.4	
PBT	74.5	89.0	76.4	163.5	155.7	5.0%
Tax	17.4	17.0	18.8	34.4	34.3	
<b>PAT</b>	<b>57.1</b>	<b>72.0</b>	<b>57.6</b>	<b>129.1</b>	<b>121.4</b>	<b>6.4%</b>
<b>PAT Margins (%)</b>	<b>16.8%</b>	<b>18.4%</b>	<b>17.5%</b>	<b>17.7%</b>	<b>17.3%</b>	<b>35 bps</b>
Basic EPS (₹)	6.3	7.9	6.3	14.2	13.3	

# Balance Sheet Highlights

₹ Mn

Equity & Liabilities	As on 31 <sup>st</sup> Mar, 2026	As on 31 <sup>st</sup> Mar, 2025	Assets	As on 31 <sup>st</sup> Mar, 2026	As on 31 <sup>st</sup> Mar, 2025
<b>Shareholders Funds</b>	<b>899.9</b>	<b>737.8</b>	<b>Non Current Assets</b>	<b>437.2</b>	<b>276.0</b>
Share Capital	91.1	91.1	(a) Property, Plant & Equipment and Intangible Assets		
R&S	808.7	647.3	i) PPE	12.5	7.4
Minority Interest	0.1	(0.6)	ii) Capital Work in progress	14.6	1.4
<b>Non Current Liabilities</b>	<b>0.0</b>	<b>0.0</b>	iii) Intangible Assets & IP Under development	207.9	144.4
<b>Financial Liabilities</b>			(b) Non Current Investment	2.0	2.0
Borrowings	0.0	0.0	(c) Long Term Loans and Advances		0.0
Other Long term Liabilities	0.0	0.0	(d) Deferred Tax Assets	3.0	4.2
Provisions	0.0	0.0	(e) Other Non Current Assets	197.3	116.6
Deferred Tax Liabilities (Net)	0.0	0.0	<b>Current Assets</b>	<b>489.7</b>	<b>504.6</b>
<b>Current Liabilities</b>	<b>27.0</b>	<b>42.7</b>	Current Investment	0.0	0.0
<b>Financial Liabilities</b>			Trade Receivables	225.6	269.0
Short term borrowing	0.0	0.0	Cash & Cash Equivalents	63.1	41.2
Trade Payable			Short term Loans & Advances	0.8	5.3
i) Due to MSME	1.6	0.6	Other Current Assets	200.2	189.1
ii) Due to Others	15.3	18.9	<b>Total Assets</b>	<b>927.0</b>	<b>780.6</b>
Other Current Liabilities	0.5	5.3			
Short Term Provisions	9.6	18.0			
<b>Total Equity &amp; Liabilities</b>	<b>927.0</b>	<b>780.6</b>			

# About Delaplex

## About our company.

18+ Years Technology Innovation Expertise with Over 400+ associates globally



**Headquarters:** Nagpur IND, Atlanta, GA,  
**Europe:** London, UK  
**Dev Centers:** Bangalore, Pune, Hyderabad, & Nagpur



**Growth:** Constant CAGR since 2014  
**NSE IPO :** Feb 2024  
**(DELAPLEX LTD.)**



Globally Featured In:



Satisfied Fortune 500 clients with long term relationships



## About our people.

Global Delivery and Fulfillment Practices



Flexible Value Delivery models fit to Client needs

Certified & Highly Skilled Experienced Workforce



Experts in Technology, Project Management, Business, Advisory & Consulting

Flexible & Adaptive Multi Shore Delivery Model



Certified, Compliant, Best Practices & Standards



Proven Technology Partnerships & Domain Expertise

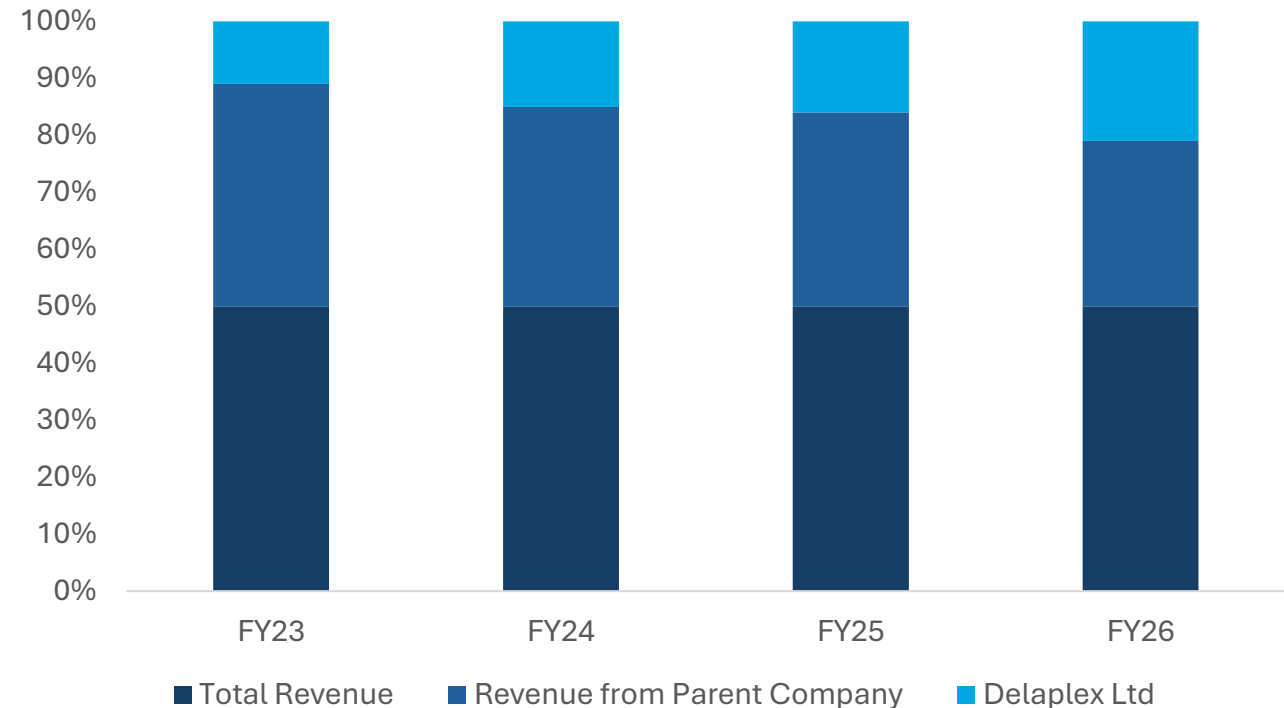


# Strengthening Direct Presence in North America while Leveraging Established US Operations

Building direct customer relationships while leveraging our established US presence

- US remains the company's **largest geography**
- **Long-standing customer relationships** developed through Delaplex Inc.
- Growing **direct sales efforts** in North America
- **Expanding account penetration** within existing enterprise customers

## Expanding our US Growth Platform



## Locations

Total: 350+ Associates

- ➔ North America
- ➔ India
- ➔ England
- ➔ Mexico
- ➔ Singapore





## Core Values

- ➔ **Honesty:** Truthfulness cultivates cohesive, impactful results.
- ➔ **Trust:** Building trusting relationships ensures genuine results.
- ➔ **Dedication:** Exceeding expectations achieves meaningful results.
- ➔ **Integrity:** Upholding integrity ensures truly valuable results.

# Indian Leadership Team

## India Leadership - Delaplex Ltd.



**Nitin Sachdeva**  
MANAGING DIRECTOR



**Dr. Rizwan Ahmed**  
CHIEF BUSINESS OFFICER  
GLOBAL CAPABILITY CENTER (INDIA)



**Elduri Hari Pratap**  
VP STRATEGIC CONSULTING



**Akash Saraiya**  
EXECUTIVE DIRECTOR



**Ravi Rangu**  
VP ASIA PACIFIC



**Vaibhav Srivastav**  
TECHNOLOGY HEAD  
CLOUD SERVICES



**Pravin Verma**  
TECHNOLOGY HEAD  
SOFTWARE DEVELOPMENT SERVICES



**Vikas Porwal**  
HEAD - SUPPLY CHAIN  
CONSULTING



**Amit Yadav**  
TECHNOLOGY HEAD



**Prashant Bokade**  
TECHNOLOGY HEAD  
STORE OPERATIONS & EXECUTION



**Reshma Kasurde**  
SR MANAGER  
PMO & CUSTOMER SUCCESS



**Avinash Mohabe**  
TECHNOLOGY HEAD  
SENIOR SOLUTIONS ARCHITECT



**Vivek Bhalla**  
PRACTICE HEAD  
STORE EXECUTION



**Jennie Kakkad Jobanputra**  
SENIOR CONTENT WRITER



**Deepak Jajoo**  
CHIEF FINANCIAL OFFICER



ABOUT US

# Global Leadership Team

## U.S. Leadership

(Delaplex Inc.)



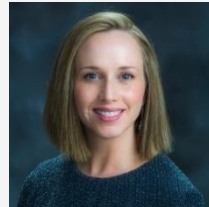
**Manish Sachdeva**  
CHIEF EXECUTIVE OFFICER



**Brian Sisley**  
CHIEF FINANCIAL OFFICER



**Marty Reynolds**  
CHIEF REVENUE OFFICER



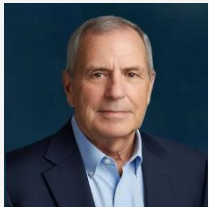
**Heidi Spencer**  
CHIEF OPERATIONS OFFICER



**Ben Taylor**  
VP IMPLEMENTATIONS



**Mansell Mccord**  
GENERAL COUNSEL



**Ernie Johnston**  
SVP STRATEGIC ACCOUNTS



**Beryl Mokros**  
DIRECTOR OF MARKETING

## U.K. Leadership

(Blueberry Systems Limited)



**Nitin Sachdeva**  
MANAGING DIRECTOR



**Bruce How**  
EVP STRATEGIC ACCOUNTS



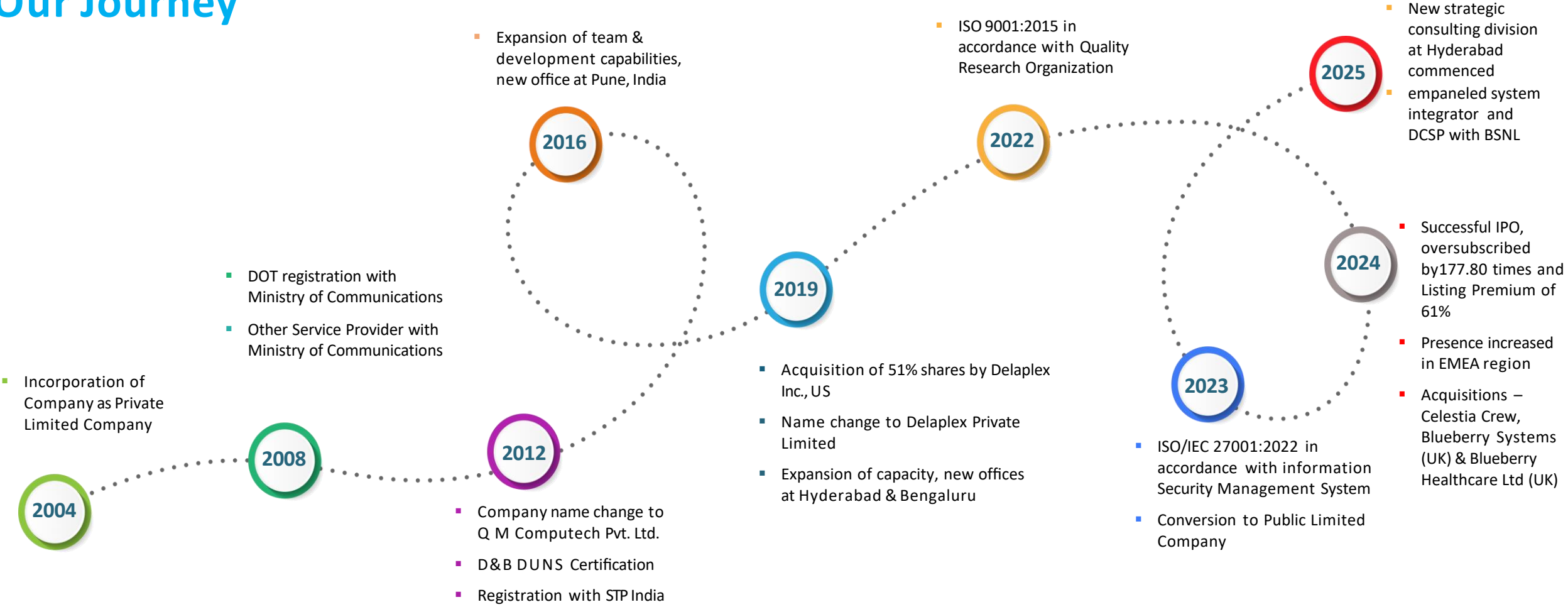
**Joy Peerwala**  
VP – DEVELOPMENT  
SERVICES



**Sam Williams**  
ACCOUNT EXECUTIVE

Empowering Tomorrow, Today.

## Our Journey



## Grant Thornton India Meets Britain Tracker



Featured in the **13th edition of the India Meets Britain Tracker 2026**, recognizing the company's growing international presence and contribution to strengthening India–UK business partnerships.

## NRF Singapore



Our participation at **NRF APAC Singapore 2026** reflected our commitment to helping retailers drive growth through digital innovation, optimized supply chains, and enhanced customer experiences.

## Forbes India



Managing Director Nitin Sachdeva featured in Forbes India for his **vision in building Delaplex into a global digital transformation and cybersecurity-focused technology company.**

## Anaplan Connect Mumbai



Our team engaged with industry leaders at **Anaplan Connect Mumbai**, showcasing our expertise in connected planning and data-driven business transformation.

## BSNL Strategic Partnership



Entered into a **collaboration** with BSNL to **develop and deploy Micro Data Center** solutions, strengthening our position in India's edge computing and digital infrastructure ecosystem.

## Manifest Las Vegas



At **Manifest Las Vegas 2026**, we demonstrated capabilities in supply chain and logistics, engaging with industry leaders and showcasing innovative solutions for transportation, fulfillment, and retail.

## India Today



Recognized among India Today's **Top 5 Inspiring & Successful Indian Personalities** for leadership in technology and digital transformation.

# Growth Drivers and Strengths

## Niche Supply Chain Expertise

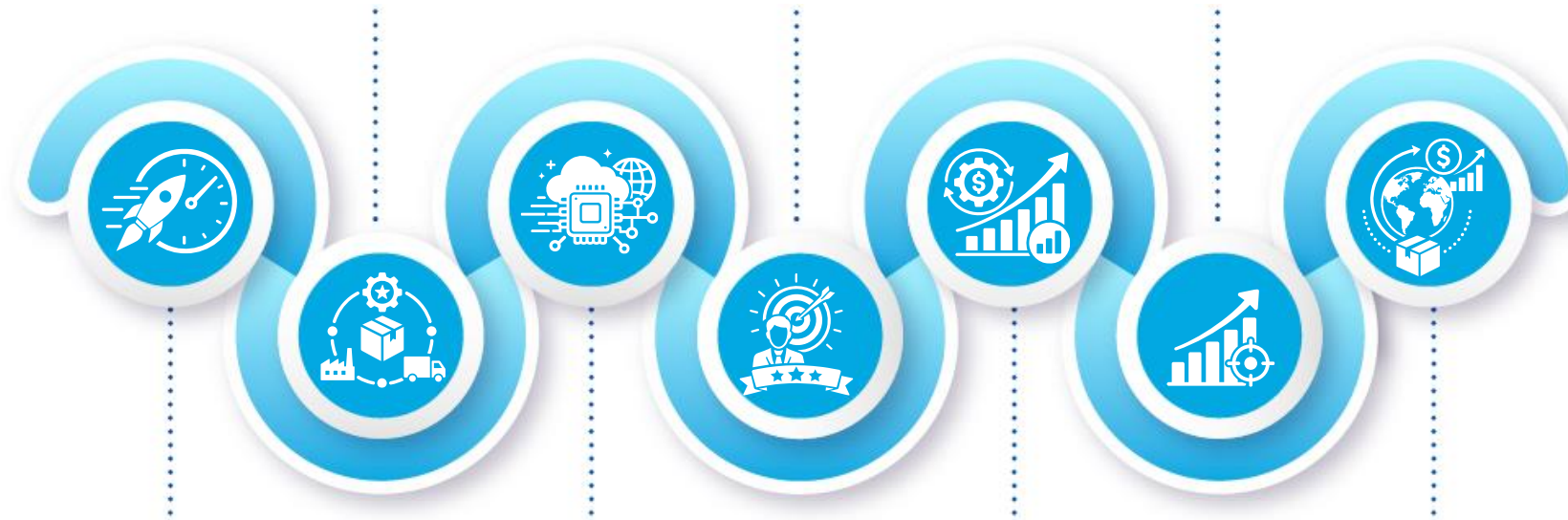
Driving enterprise value through high-demand, end-to-end omni-channel supply chain consulting

## Execution-Focused Leadership

Anchored by seasoned Key Managerial Personnel (KMPs) with a proven track record of disciplined strategic expansion

## High-Growth Market Focus

Targeting the underserved mid-market and SME segments with agile, high-margin software solutions



## Accelerated Time-to-Market

Propelling client growth from MVP to enterprise scale through robust, product-led engineering

## Next-Gen Tech & Infrastructure Capabilities

Capitalizing on the digital transformation boom by blending advanced AI, Cloud, and DevOps with cutting-edge Micro Data Center innovations

## Predictable Revenue Engines

Securing long-term cash flow visibility through exceptional client retention and sticky, long-standing partnerships

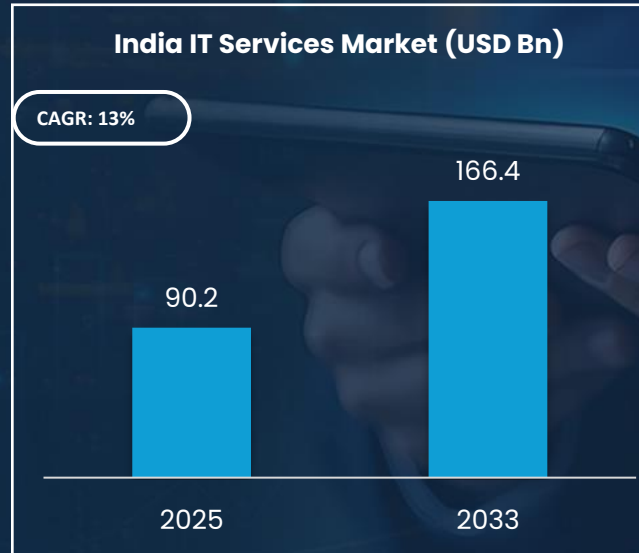
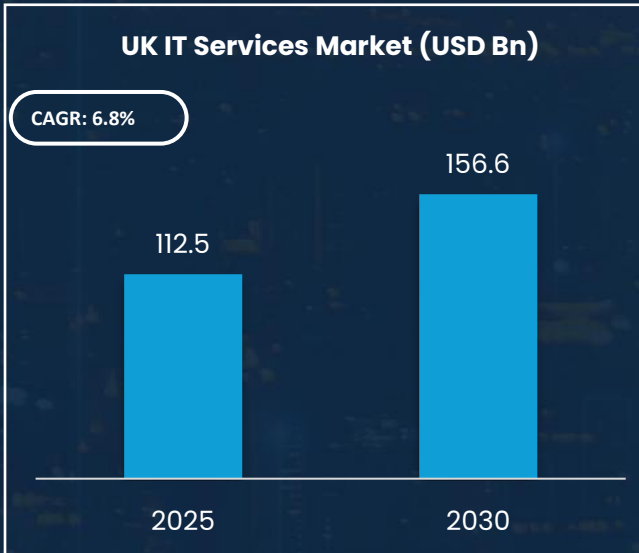
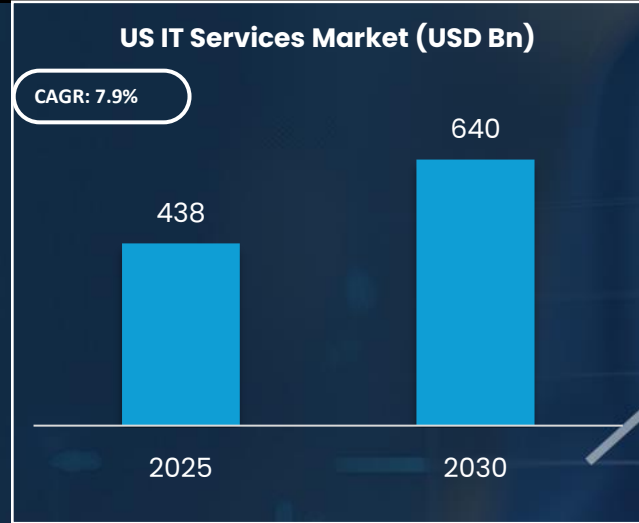
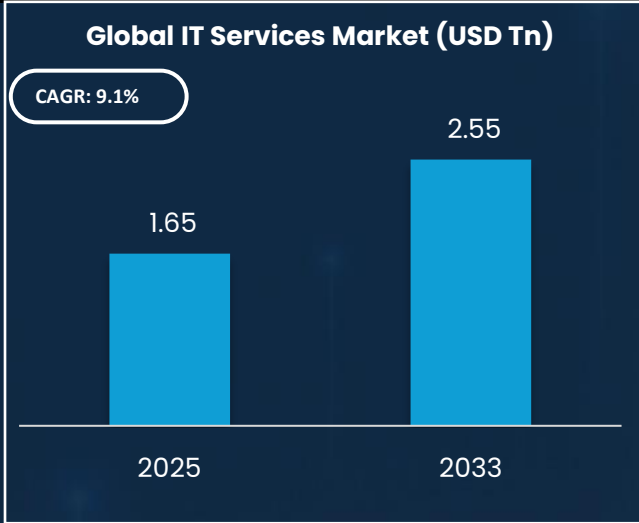
## High-Margin Global Delivery

Maximizing operational profitability via an optimized, 24/7 hybrid offshore-on-site delivery model

 BUSINESS TECHNOLOGY CONSULTANCY AND SERVICES FIRM

# Business Highlights and Growth

# IT Services Industry Overview



Indian technology industry revenue is estimated at **USD 315 billion in FY26**, growing **6.1% YoY**, supported by AI adoption, cloud transformation, cybersecurity investments, and GCC expansion



AI-related revenues are estimated at **USD 10–12 billion in FY26**, reflecting a shift from pilot projects to scaled enterprise deployments across industries



India's technology sector added **~135,000 net jobs in FY26**, taking total industry employment to approximately **5.95 million professionals**.



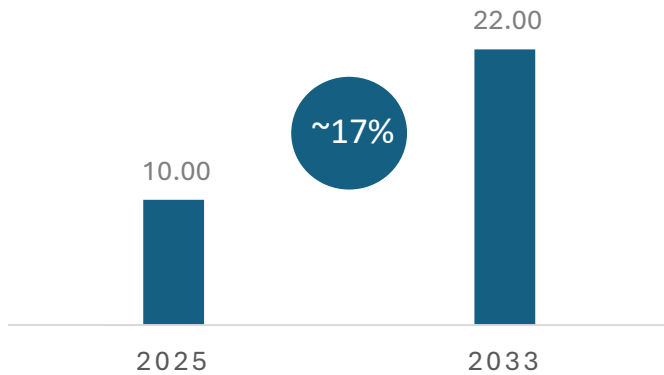
More than **2 million professionals** have been **upskilled in AI**, including **200,000–300,000** with advanced AI skills, strengthening India's position as a global digital talent hub.



**Cybersecurity, data analytics, cloud services, digital engineering, and GCC-as-a-Service** are emerging as **key growth areas** for technology SMEs and mid-sized IT service providers.

# Understanding the Data Centre Market

## India Data Centre Market



- India's data centre capacity is expected to increase from ~1.4 GW in 2025 to over 4.5 GW by 2030
- More than USD 25-30 billion of investments are expected in the sector by 2030
- India is expected to remain one of the fastest-growing data centre markets globally
- AI-ready infrastructure is emerging as the next major growth catalyst for the industry



# Enterprise Delivery COE's



## Warehouse Management

Optimize inventory and streamline operations with our cutting-edge WMS solutions, ensuring efficiency, accuracy, and timely delivery.



## Store Operations

Boost store performance with innovative solutions for seamless operations, improving customer experience and operational efficiency.



## Cyber Security & Data Governance

vCISO , DPO, Security as a Service and trainings specifically for best practices on security. Data Governance including Data Cataloguing, Data Monetization, Access Management, and Impact Analysis.



## IT Infra & Storage Solutions

Brick Innovation Storages and Data Center Solutions with AI ready Micro Data Center capabilities offering flexible and modular designs with the effective infra management solutions.



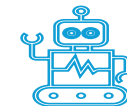
## Workforce Management

Maximize employee performance and enhance CX with smart, dynamic workforce management solutions, optimizing every aspect of your team.



## Testing as a Service

Modernize all aspects of testing to reduce risks, improve quality, enhance efficiency, and ensure comprehensive coverage.



## AI and IoT

Driving innovation and efficiency, AI and IoT optimize operations and decision-making with smart systems and real-time analytics.



## Knowledge Management (KMS)

Delivering AI Driven innovative Knowledge Management Services custom fit to the domains and areas of the business excellence.

# Maturing – In House Intellectual Property

## MDC Integrated Micro Data Center

Micro Data Centers offer high-performance, co-located solutions designed to meet your evolving digital needs.

Our services provide dedicated resources within a secure, scalable environment, giving you the flexibility and control of a virtual server—without the complexities and costs of managing physical hardware. Dela One ensures the performance, reliability, and support you need to thrive online.

### Product Highlights



- ▶ Power Distribution Management (PDM)
- ▶ Uninterrupted Power Supply (UPS)
- ▶ Hardware Security Console Mgt. (HCM)
- ▶ Data Center Cooling System (DCCS)

- ▶ Fire Suppression System (FSS)
- ▶ Network Monitoring System (NMS)
- ▶ Remote Management Console (RMC)
- ▶ GPU / CPU – Processing & Storage

### Platform Highlights

- Cost-Effective & Affordable
- 100% Secure and Compliant
- Easy Deploy & On Demand scale
- Simplified Central Management
- 24/7 Expert Support & MNS

## Di-AMS

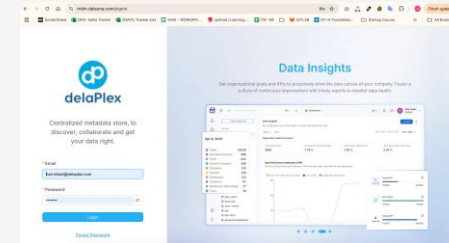
### Asset Management System



The Delaplex Intelligent AMS is an advanced AI Driven asset management software solution that simplifies the holistic approach of managing organizational assets such as hardware, software, digital or any other type of assets during their entire lifecycle, from acquisition through retirement. With a solution built for today’s dynamic enterprise environment, you will be able to gain unprecedented control, compliance, and cost efficiency.

## MDM

### Modern Data Management Platform



MDM is designed to be Generative AI-ready, leveraging its Unified Metadata Graph as the essential context for AI-driven initiatives. This foundation helps organizations improve governance, accelerate insights, and unlock business value through automation and intelligence. MDM transforms this challenge into an opportunity by embedding AI and automation at the core of data governance and management.

# Software Development Service



- Product Development - Providing support at every stage of the software development cycle—creation, design, and build—through onshore, offshore, or onsite models
- Testing ( Quality Assurance) - Providing specialised testing services, optimising testing cycle, and re-engineering services
- IT Consulting and Services - Providing strategic IT consulting and operational support to optimize client IT infrastructure, enhance business processes, and ensure seamless technology integration.



**350+**

Team Members



**32+**

Specific Skillsets



**18+**

Years of Smiling Clients

Delaplex leverages Mobile, Web, Analytics, IOT, Social and Cloud technologies to develop custom software applications and products for a broad range of industries, including Retail, Hospitality, Broadcast Media, Financial Services, Healthcare, and Software & Technology.

# Enterprise Centers of Excellence

## Highly Specialized Knowledge Hubs

Access to experts with:

- Niche skills
- Resources
- Tools

Providing in-depth solutions that are:

- Adaptable
- Scalable
- Precise
- Accurate
- Timely



Empowering Tomorrow, Today.

# Delaplex Empaneled as National Level DCSP - A Step Forward in Technological Integration

## Integrated Sovereign Micro Data Center Infrastructure

-  **Monitored Dashboard**  
AI - Edge Enabled Network Monitoring)
-  **Expandable Storages**  
(Block Storages & NVM Bases - 1PB - 10 PB )
-  **Power Supply & Backups**  
Less than 30kW~ Scaling up to 300kW
-  **Cooling Unit**  
Liquid Cooling with Integrated Sensor & CO2 Ionized convertors .
-  **Security Layer**  
Integrated Security Layet with Realtime Patch Update.
-  **Networking Capabilities**  
PAN INDIA - BBNW Integration with SWAN and WAN Network

HYDERABAD | PONDICHERRY | JAIPUR | GUWAHATI | MUMBAI

## Future Ready **AI Powered** Sovereign Micro Data Centers



**MNCs and  
Enterprises**



**Startups and  
entrepreneurs**



**IT Companies &  
New Tech  
Business**



**E-commerce  
businesses**



**PSUs and Govt**



**MSME's**

BTCL Sovereign Micro data Centers is Ideal For

# Recent developments and Growth Strategy



## Tech Partnerships

Technology edge: Ongoing upskilling and cross-skilling in AI and other next-gen tech to stay ahead

Strategic Partnership: Partnered with a California-headquartered global IT firm to deliver cutting-edge Modern Data Management solutions.



## Acquisitions and Synergies

Acquired Celestia Crew Consultancy, a Bengaluru-based WFM & HRMS consulting firm, enhancing Delaplex Limited's offerings and product mix to support revenue growth

Established a new consulting division in Hyderabad to accelerate services-delivery growth.



## Partnership with BSNL – Micro Data Centers

Empanelled as National Level System Integrator

Partnered with BSNL (June 2025) to launch India's first Integrated Micro Data Center services in the Telangana circle, marking Delaplex's entry into digital infrastructure and edge computing under a PPP model

Executing POC's with National Bank.

Bagged initial PO for the PSU for setting their collocated MDC at PY



## New Geographies

Incorporated Delaplex Software Limited (UK) and acquired a UK-based developer, establishing an EMEA footprint and driving synergies.



## Retain, strengthen and grow customer base

We maintain a lean team by blending experienced professionals with dynamic young talent, delivering exceptional value and strong financial results. Recent successes include a new Oil & Gas order and a System Integrator partnership with BSNL.

# Driving Innovation Through AI



### Expertise:

Specialization in AI/ML, application modernization, and data analytics

### Business Impact:

Enhanced decision-making, operational efficiency, and new revenue streams.



### Proven Results:

Delivered robust, cloud-based behavioral analytics platforms for global clients

### Opportunity:

Positioned to capitalize on the growing demand for AI integration among Indian SMEs



“India’s artificial intelligence market is projected to touch **\$17 billion by 2027**, growing at an annualised rate of **25–35% between 2024 and 2027.**”

“Leveraging AI and advanced analytics, Delaplex empowers organizations to unlock actionable insights, automate processes, and accelerate digital transformation”

# Delivering Solutions Across Sectors



Supply chain and logistics



Retail



Healthcare



Broadcast and New Media



Fintech



Technology & IT enabled services



F & B / CRSs



Telecommunications



Manufacturing  
(leveraging enterprise solutions & partner tech)



Ed-Tech

## Delivering Value and Innovation for Industry Leaders

### Technology and Consulting:

- Global IT consulting firms and enterprise solution providers.
- Industry leaders in business transformation and innovation.

### Retail and Consumer Goods:

- The largest specialty retailer in the U.S.
- Top grocery chains and convenience store operators.

### Energy and Logistics:

- Global leaders in energy and supply chain logistics.
- Proactive innovators in workforce management solutions.

### Enterprise Software and SaaS:







- Trailblazers in enterprise SaaS platforms for workforce and retail management.
- Next-generation startups revolutionizing enterprise systems.



# Driving Success Through Collaborative Alliances

With 18+ years of expertise, Delaplex Limited is a trusted partner for organizations driving digital transformation.

## Strategic Partnership and Alliances

-  **Blue Yonder (formerly JDA):** Partner Advantage member, providing deep expertise to implement, train, and support the Blue Yonder suite for supply chain excellence.
-  **Microsoft:** Gold Partner, leveraging Microsoft technologies to develop, deploy, and maintain world-class enterprise solutions.
-  **Oracle:** Gold member of the Oracle Partner Network, utilizing its database and Java technology expertise for enterprise solutions across various industries.
-  **IBM:** Strategic partner for delivering cutting-edge solutions by integrating IBM's advanced technologies like AI, hybrid cloud, and cybersecurity with Delaplex's agile development.
-  **AWS Partner Network (APN):** An APN Select Consulting Partner, focused on building solutions and services that leverage Amazon Web Services.
-  **ISTQB (International Software Testing Qualifications Board):** A Gold-certified company, demonstrating high proficiency and expertise in software testing based on ISTQB competencies.




# Outlook

# Our Way Ahead



## Market Expansion

Targeting Europe, the Middle East, and Africa for service roll-out, along with Pan-India expansion of Micro Data Centers (MDC) through the BSNL partnership



## Talent Acquisition

Expansion of talented professionals to drive product research, innovation, and technology development



## Business Wins

Added BSNL as a major client with multiple projects underway. Secured strategic Micro Data Center contracts with a leading PSU Bank (Mumbai) and the Pondicherry Government. Achieved strong wins across Public Sector and Banking verticals




## Increasing Market Reach

Enhancing brand visibility through participation in key industry events and strategic engagements



## Innovation

Launch of new AI-driven solutions and proprietary Micro Data Center (MDC) technology for Edge Computing, enhancing customer experience and product capabilities



## Focus on Increasing Sales

Sharp focus on expanding both domestic and international sales presence



## Employee Upskilling

Investing in AI/ML certifications and skill development programs to strengthen workforce capabilities

# Thank You

For further information, please contact

## Delaplex Ltd.

**Mr. Manishraj Bhatt**

[compliance@delaplex.com](mailto:compliance@delaplex.com)

<https://delaplex.in/>

## AdfactorsPR Pvt. Ltd.

**Mr. Smit Patel**

[Smit.patel@adfactorspr.com](mailto:Smit.patel@adfactorspr.com)

**Mr. Vishal Bhalada**

[Vishal.Bhalada@adfactorspr.com](mailto:Vishal.Bhalada@adfactorspr.com)

**Mr. Vivek Sahu**

[Vivek.sahu@adfactorspr.com](mailto:Vivek.sahu@adfactorspr.com)