

To,

Date: 14.10.2025

The Manager
Department of Corporate Services- Compliances
National Stock Exchange of India Limited
Exchange Plaza, Bandra Kurla Complex,
Bandra (East), Mumbai- 400 051

Sub: Business Updates

Ref: Regulation 30(3) of Securities and Exchange Board of India (Listing Obligations and Disclosure Requirements) Regulations, 2015

Dear Sir/Madam,

In pursuant to Regulation 30 of SEBI (Listing Obligations and Disclosure Requirements) Regulations, 2015, We would like to provide an update on the business performance of Brace Port Logistics Limited for the H1 FY 26.

This is for your kind information and record please.

Thanking You,

Yours faithfully,

For Brace Port Logistics Limited
(Formerly Brace Port Logistics Private Limited)

Megha Verma
Company Secretary cum Compliance Officer
M.No: A63650

Place: Delhi

Brace Port Logistics Limited – H1 FY26 Business Update

Expands global footprint through Key International Shipments | New Client Onboarding | Automotive Logistics Growth

Brace Port Logistics Limited offers customized logistics and supply chain solutions across key industries. With 50+ professionals, it provides freight, warehousing, transportation, and customs services. The company has a strong domestic and global presence, including its UAE subsidiary, and is part of Skyways Air Services Limited.

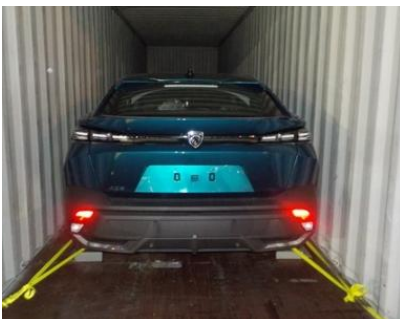
Key Business Highlights

Electric Bus Transportation



- **Destination:** Germany and Jebel Ali
- **Cargo:** 12-meter-long electric buses
- **Challenge:** Oversized cargo not loadable by standard forwarders
- **Solution:** Custom FCL loading and vessel handling
- **Impact:** Strengthened engagement with leading Indian auto manufacturer

Car Movement – Malaysia to Cambodia



- **Route:** Malaysia to Cambodia
- **Volume:** Two separate lots of 24 cars each (total 48 cars)
- **Scope:** Managed complete movement and vessel loading for both shipments
- **Outcome:** Reinforced expertise in cross-border automotive logistics across ASEAN markets

New International Clients Onboarded

- **Continental Tires** – Global tire manufacturer
- **Ashbee Systems Limited** – Weighing technology solutions provider
- **Significance:** Expanding international customer base and strengthening automotive and industrial cargo portfolio

Shipment of Mitsubishi Fuso Trucks



- **Origin–Destination:** Japan to Cambodia
- **Scope:** Pickup from factory, port transport, container loading, lashing, and sea shipment
- **Result:** Demonstrated end-to-end project cargo handling for automotive OEMs

Commenting on the performance, Mr. Sachin Arora, Managing Director of Brace Port Logistics Limited said, “Our recent operations demonstrate the growing trust of our global clients and our ability to handle complex shipments with reliability and precision. The successful movement of electric buses and multiple car consignments across international routes reflects the strength of our planning and execution.

New associations with Continental Tires and Ashbee Systems add strength to our international portfolio and open new opportunities in the automotive and industrial segments. With steady traction in EV logistics and cross-border cargo movement, we aim to expand our reach through our UAE subsidiary and network of partners in over 60 countries. We continue to focus on dependable execution, operational efficiency, and building long-term relationships that support consistent, sustainable growth for Brace Port.”

Disclaimer

Certain statements in this document that are not historical facts are forward looking statements. Such forward-looking statements are subject to certain risks and uncertainties like government actions, local, political or economic developments, technological risks, and many other factors that could cause actual results to differ materially from those contemplated by the relevant forward-looking statements. The Company will not be in any way responsible for any action taken based on such statements and undertakes no obligation to publicly update these forward-looking statements to reflect subsequent events or circumstances.