

Ref: CS/SEs/ 810

10.06.2026

National Stock Exchange of India Ltd. Listing Compliance Department Exchange Plaza, Bandra - Kurla Complex, Bandra (East), MUMBAI – 400 051 Symbol: BEML	The BSE Limited Listing Compliance Department P.J. Towers, 26 th Floor, Dalal Street, MUMBAI – 400 001 Scrip Code: 500048
---	---

Dear Sir / Madam,

Sub: Presentation for Analyst / Investor Meet – Reg

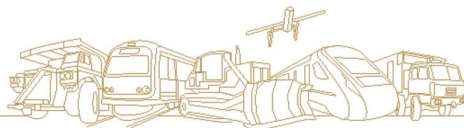
Ref: CS/SEs/805 dated 04.06.2026

Pursuant to Regulation 30 of the SEBI (Listing Obligations and Disclosure Requirements) Regulations, 2015, please find enclosed the Presentation to be made at the Investor meet scheduled today i.e., 10.06.2026.

Thanking you,

For BEML Limited

Urmi Chaudhury
Company Secretary & Compliance Officer
ICSI Mem No.: 29400
Place: Bengaluru



ಪ್ರಧಾನ ಕಾರ್ಯಾಲಯ Corporate Office:

'ಬೆಂಗಳೂರು', ೨೩/೧, ೪ನೇ ಮುಖ್ಯರಸ್ತೆ, ಸಂಪಂಗಿರಾಮನಗರ, ಬೆಂಗಳೂರು - ೫೬೦೦೨೭. ದೂರವಾಣಿ ಸಂಖ್ಯೆ : +೯೧೮೦೨೨೯೯೨೦೬೫

ಫ್ಯಾಕ್ಸ್ ಸಂಖ್ಯೆ : +೯೧೮೦೨೨೯೯೦೪೦೯೯

BEML Soudha, 23/1, 4th. Main, S R Nagar, Bangalore – 560027, Tel. +91 80 22963142/211, Fax. +91 80 22963142

e-mail: cs@beml.co.in @cmdbeml @BEMLHQ

CIN: L35202KA1964GOI001530, GST NO. 29AAACB8433D1ZU

www.bemlindia.in

Investors Meet
10.06.2026



BEML Limited

Schedule "A" Company, Under ministry of Defence



Mining • Construction • H&P • Rail & Metro • Aerospace • Armored • Engines • HMV • Sustenance

MINING • CONSTRUCTION



Statements in this presentation describing the Company’s performance may be “forward looking statements” within the meaning of applicable securities laws and regulations. Actual results may differ materially from those directly or indirectly expressed, inferred or implied.

Important factors that could make a difference to the Company’s operations include, among others, economic conditions affecting demand/supply and price conditions in the domestic and overseas markets in which the Company operates, changes in or due to the environment, Government regulations, laws, statutes, judicial pronouncements and/or other incidental factors.

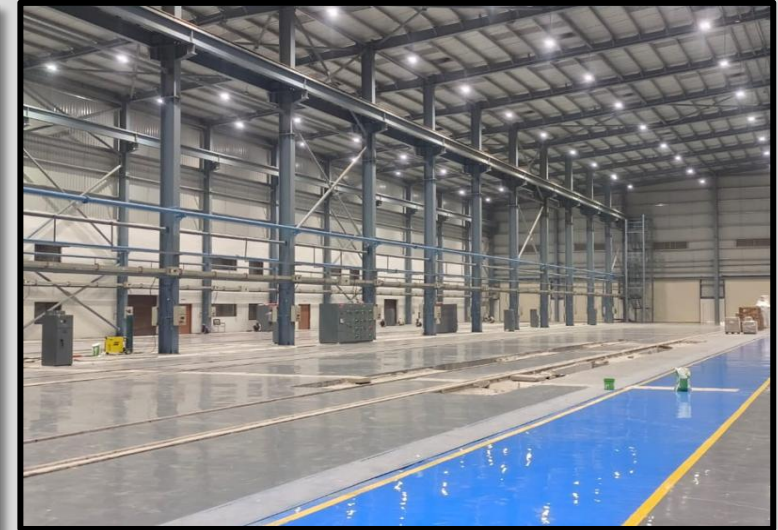
BEML FLAGSHIP ACHIEVEMENTS : Innovation, Connectivity & Capacity



Hon'ble Prime Minister Flagged off Vande Bharat Sleeper train



New Facility 'ADITYA' plant for High Speed Rail inaugurated by Hon'ble Union Minister of Railways



Rope Shovel



Dump Trucks



New facility for Rolling stock at Bhopal (BRAHMA Project) inaugurated by Hon'ble Union Minister of Railways



About BEML limited

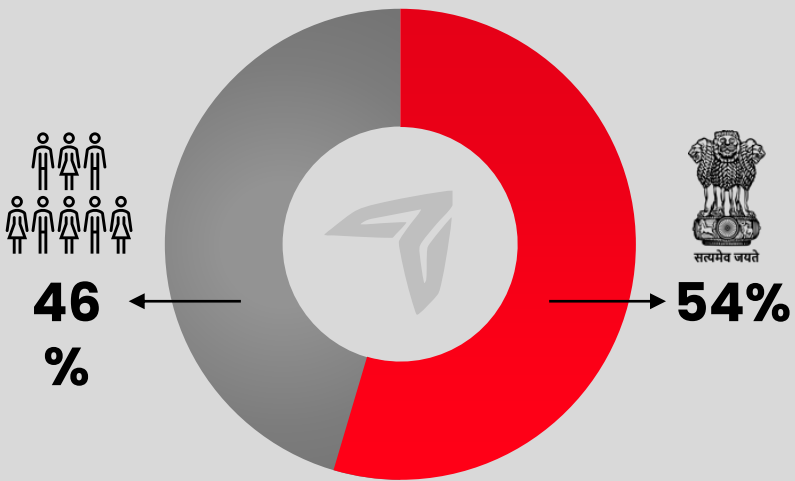


रक्षा मंत्रालय
MINISTRY OF
DEFENCE

Schedule 'A' Company
Public Sector Undertaking
Ministry of Defence,
Govt. of India.

Established on 11th May, 1964

Equity share



Business verticals & contribution

Defence & Aerospace



Mining & Construction



Rail & Metro



Defence & Aerospace

FY25 – **27%**
FY 26 – **35%**
of Revenue

Mining & Construction

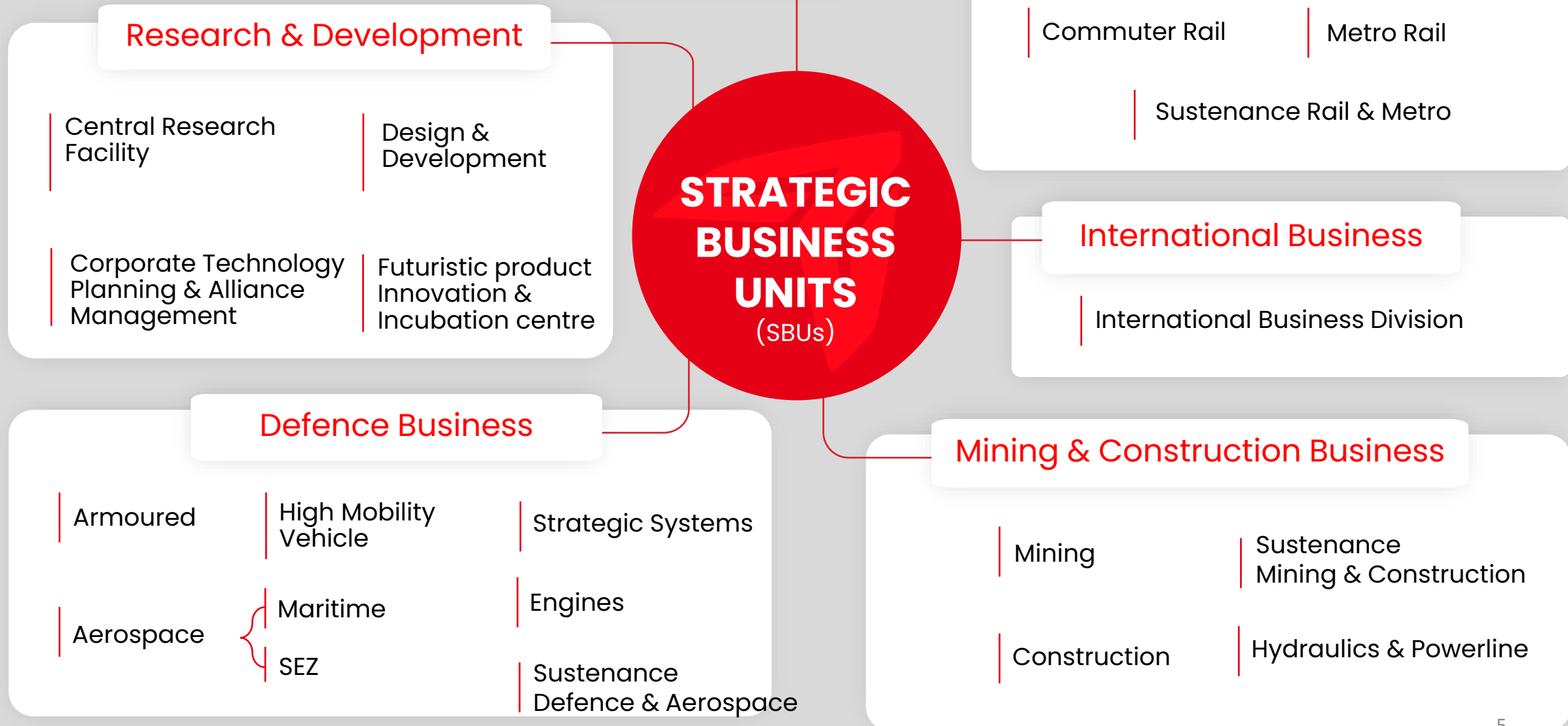
FY25 – **54%**
FY 26 – **41%**
of Revenue

Rail & Metro

FY25 – **19%**
FY 26 – **24%**
of Revenue

Organization Structure

Business Verticals





BEML: Pan-India Presence Across the Nation

- 4 ■ MANUFACTURING COMPLEXES
- 3 ○ SEAPORT OFFICE LOCATION
- 3 ✦ ZONAL OFFICES
- 12 ● REGIONAL OFFICES
- 16 ▲ DISTRICT OFFICES
- 1 ★ DEFENCE SPARES DIVISION
- 7 ☆ ACTIVITY CENTRES

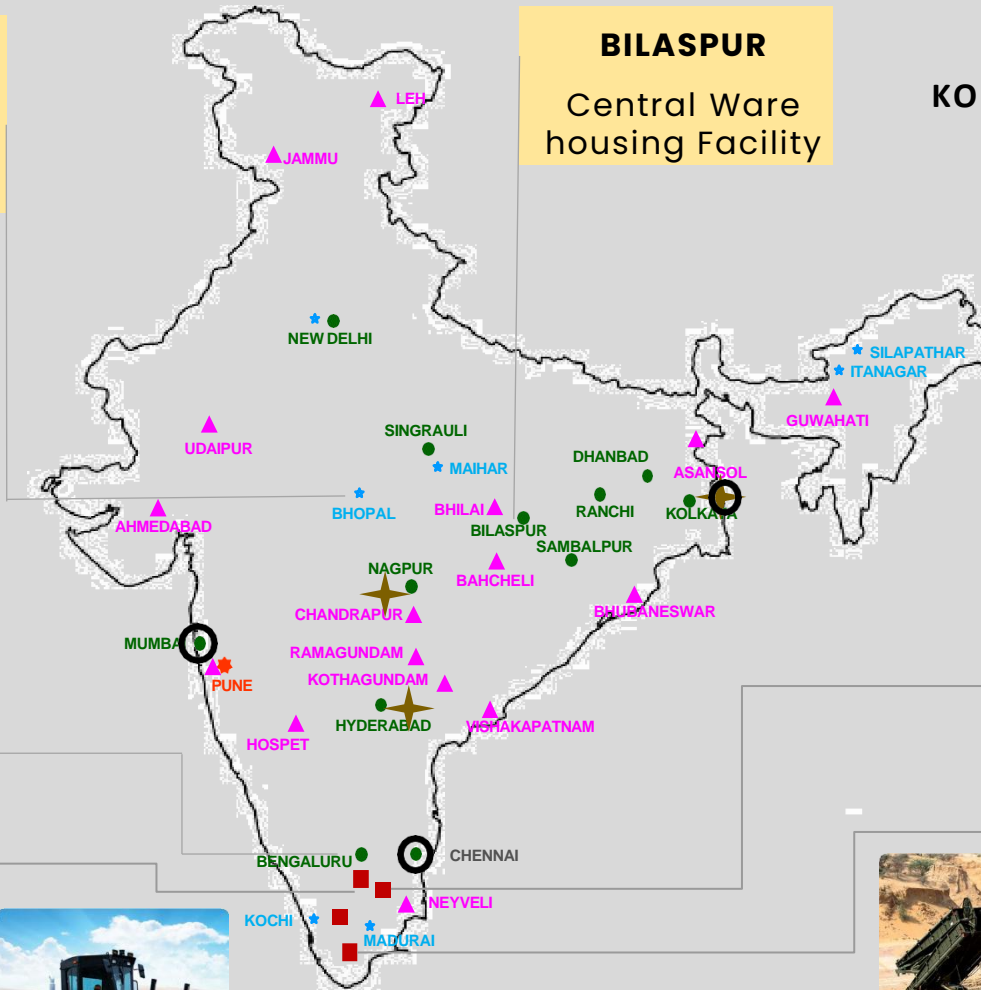
BHOPAL

148 acres of land allotted for Rail Mfg Facility

BILASPUR

Central Ware housing Facility

KOLAR GOLD FIELDS (KGF)



BENGALURU



MYSURU



PALAKKAD



*Map Not To Scale



Journey of BEML



Earth Moving Equipment



BMP Transmission



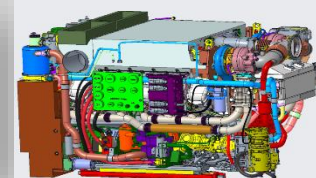
Metro Cars



India's biggest Mining equipment



Unmanned Aerial Vehicle - Initial Trial completed



1500 hp Engine for Main Battle Tanks



HMV 12 X 12



EV Dump Truck



1964 1967 1986 1987 2000 2003 2014 2019 2021 2022 2023 2024 2025 2026



Rail Coaches

High Mobility Vehicles

Armoured Recovery Vehicles

Missiles Aggregates and Airborne structures

Driverless Metro

Rail Grinding Machine

Vande Bharat Sleeper Set

BRS21 -21 Cu.m Rope Shovel



PRODUCTS DEVELOPED DURING 2025-26



Vande Bharat Sleeper Trains



HMV 12 X 12



LAMV



21 Cum Rope Shovel



550hp Motor Grader



35T Electric Dump Truck

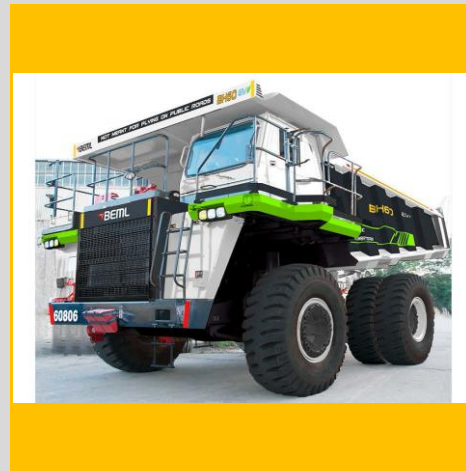
PRODUCTS UNDER DEVELOPMENT



High Speed Rail



Base Vehicles for LRSAM
(HMV 12X12, 8X8, 6X6)



60T/100 T EV Dump truck



8T Tyre Handler

Major ACCOMPLISHMENTS

Defence



9500+ BEML High Mobility Vehicles

352 Armoured Recovery Vehicles

3700+ Trailers / Military Wagons

6 Sets 330 Nos. Pontoon Bridge Systems

1500 hp Engine for Main Battle Tanks

1170+ Track Width Mine Ploughs

2 Nos. Armoured Recovery & Repair Vehicles

Aerospace



Integration of Light Alloy Structures – LVM3

Nodal Agency for Ground Handling & Ground Support Equipment – LCA Mk2

Manufacturing of Akash & QRSAM Motor Casing

Integration of Su-30 Sub Assemblies

Rail & Metro



18000+ Rail Coaches & 900 EMUs

2130+ Metro Cars

Vande Bharat Sleeper version Trains

Mining & Construction



34000+ Mining & Construction Equipment

29400+ Engines (76HP – 700HP)

Export



1400+ Equipment to 73 Countries

BEML
Exported

1400+
EQUIPMENT

TO

73
COUNTRIES

**WESTERN
HEMISPHERE**

**EASTERN
HEMISPHERE**

Europe

37 09

North America

02 02

Latin America

71 04

Africa

484 27

CIS

41 03

SAARC

213 05

Asian

105 12

Middle East

453 11

No. of Equipment

No. of Countries

Defence products exported to **Israel, Sri Lanka, Bhutan, Suriname & Honduras**

Mining & Construction products exported **Across the Globe**

Railway products exported to **Sri Lanka & Bangladesh**

MAJOR ACHIEVEMENTS DURING FY 25 - 26

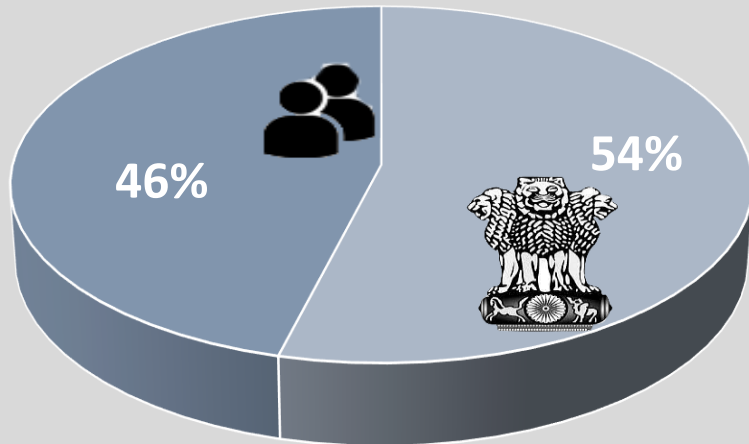


- Highest ever order book of **Rs. 15896 Crores** including Highest ever Export Order book of **\$107M**.
- India's first indigenously designed and developed **21 Cubic Meter Electric Rope Shovel** handed over to M/s Coal India Limited.
- Designed, developed and supplied **550hp Motor Grader** to M/s SECL.
- BEML-Engineered **MMME Mk-II** Inducted into Indian Army.
- Commenced manufacturing of **High Speed Rail** components at Bangalore Complex.
- Commenced the assembly of **Light Armoured Multipurpose Vehicle (LAMV)** at Kolar Gold Fields.
- Inaugurated **New Warehousing facility** at KIADB Aerospace Special Economic Zone (SEZ) in Bengaluru.
- Foundation stone laid for a new **Central Warehousing Centre** at Bilaspur.
- Foundation stone laid for **New Bhopal Plant (BRAHMA)** by Hon'ble Raksha Mantri.
- **Vande Bharat Sleeper Train** designed & developed by BEML was dedicated to the Nation by Hon'ble Prime Minister of India on 17th Jan, 2026 at Malda, West Bengal.
- BEML Rolls Out Prototype of **New Driverless Metro Trainset** for BMRCL's Phase-2 Network.
- First ever Export Order for **Metro Rolling Stock**.



- BEML won **National Award for Outstanding Export Performance** for FY 2021-22 at **54th EEPIC Indian National Awards** in 2025.
- BEML has been honoured with two prestigious awards at **ET Leadership Excellence Awards 2025**.
 - The Excellence in Indigenous Engineering Award for our CMD Shri Shantanu Roy.
 - The Trusted Brand Excellence Award for BEML.
- Won **Golden Peacock Eco-Innovation Award 2025** for all-electric BRS-21 Rope Shovel.
- Received **Samarpan PSU Award** for exemplary leadership and steadfast commitment for steering BEML towards greater heights of self-reliance, innovation and global competitiveness on 18th April 2025.
- KGF Complex won **Uttama Suraksha Puraskara for Excellence** in Safety in September 2025.
- BEML won five awards at **19th Global Communication Conclave 2025** organized by Public Relation Council of India (PRCI) – Business Communication Leadership; Content Marketing; Corporate Partnership; Table Calendar; Corporate Brochure.
- BEML shines with **Gold at EEPIC India Quality Awards 2025**.
- BEML Limited has been honored with 3 Awards during the “12th Governance Now PSU Awards” :
 - **PSU Leadership Award – CMD**
 - **Aatmanirbhar Bharat Innovation Award**
 - **Communications Excellence Award**

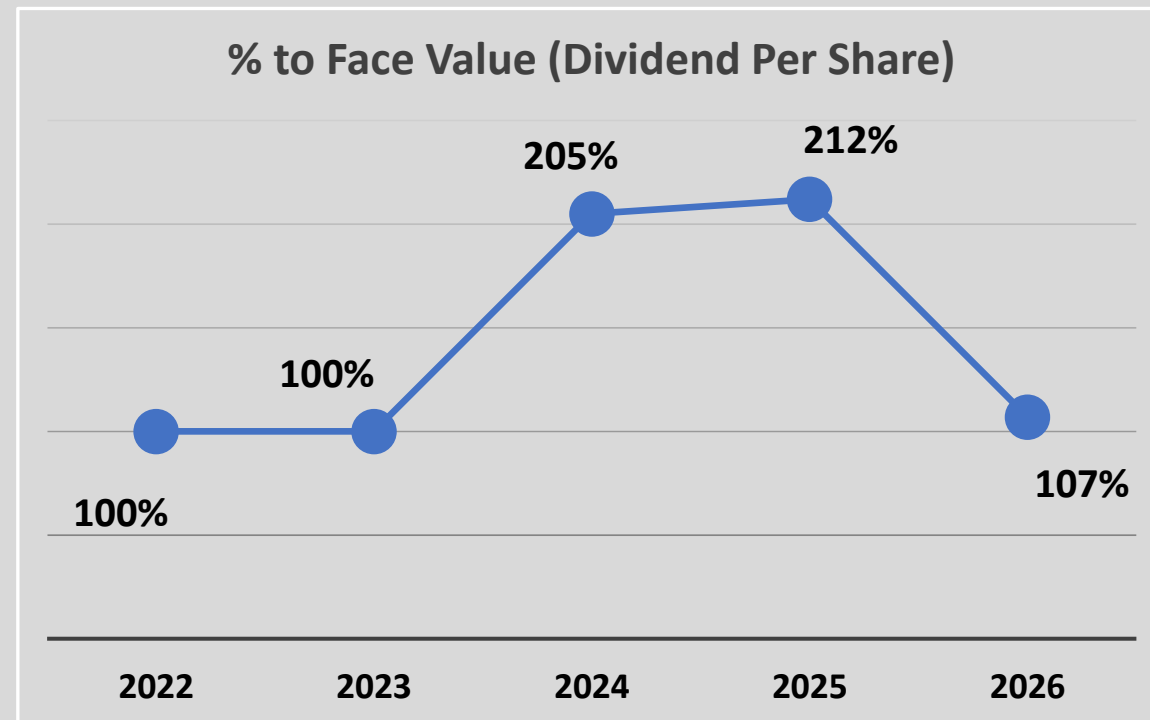
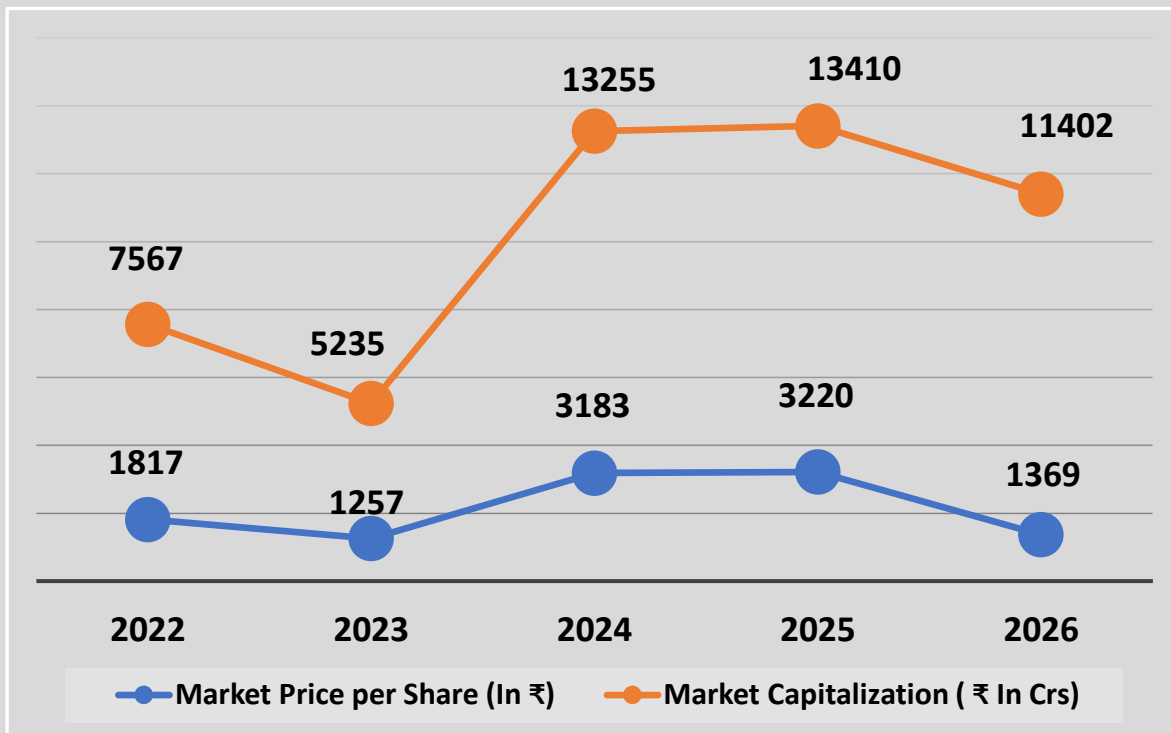
SHARE HOLDING PATTERN



■ Gol ■ Others

Category	As on 31.03.2026	As on 31.03.2025
Government of India	54.03%	54.03%
Mutual Funds	17.55%	17.50%
Resident Individuals	18.21%	17.49%
Foreign Portfolio - Corp	5.59%	7.27%
Bodies Corporates	1.49%	0.91%
Qualified Institutional Buyer	1.00%	1.09%
Non-Resident Indians	0.80%	0.49%
H U F	0.62%	0.55%
Alternative Investment Fund	0.15%	0.09%
Trusts	0.01%	0.01%
Non-Resident Indian Non Repatriable	0.36%	0.38%
IEPF	0.19%	0.19%
Others	0.00%	0.00%
Total	100.00%	100.00%

Shareholder's Return



➤ BEML completed stock split on November 3, 2025, by splitting One Equity share of Face value of Rs 10 into Two Equity shares of Face value of Rs 5.

➤ Closing Share Price on Mar 26- ₹ 1369/-

Closing Share Price on Mar 25- ₹ 3220/- (FV ₹ 10/- per share)

Closing Share Price on Mar 25- ₹ 1610/- (FV ₹ 5/- per share)

Key Highlights

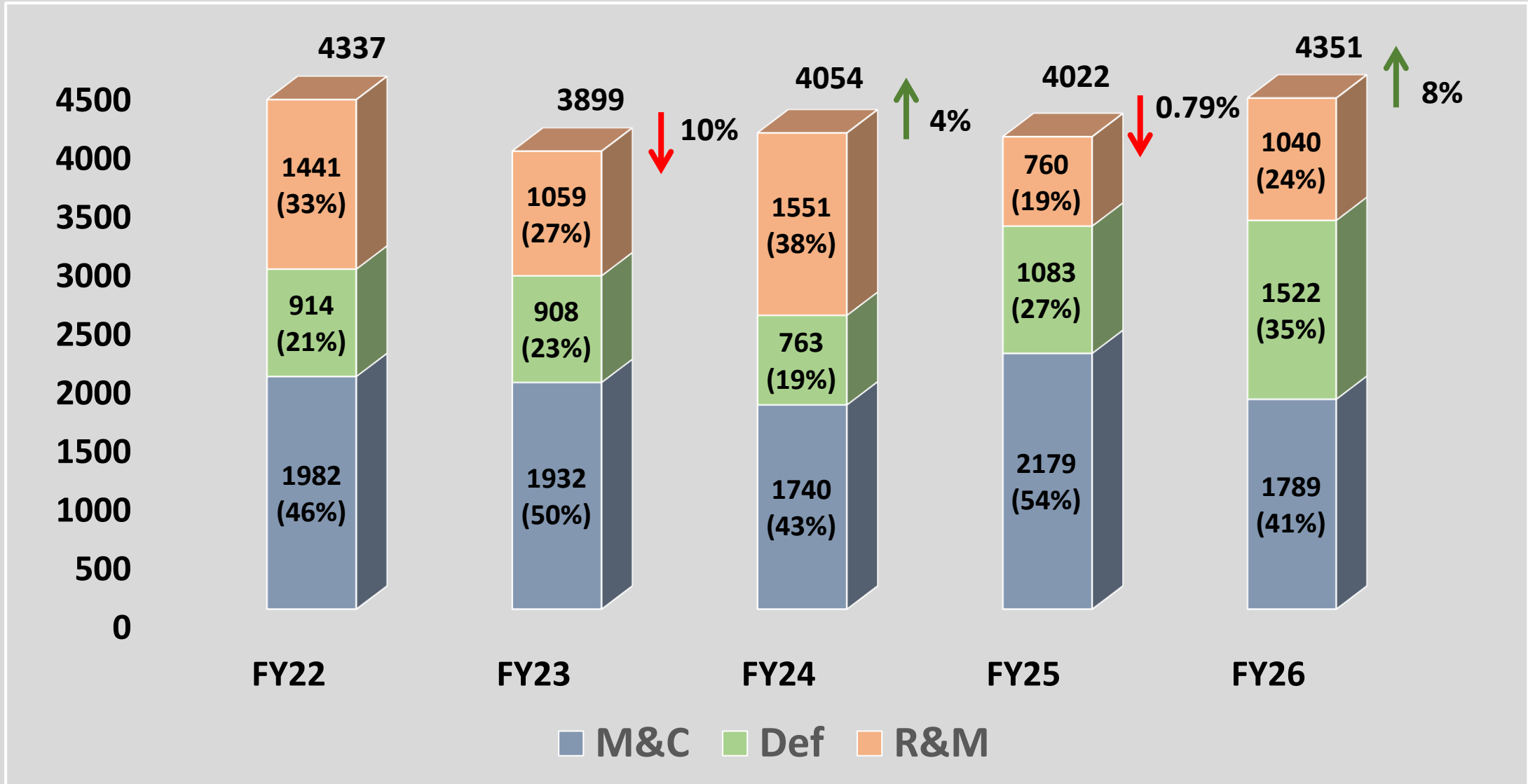


PARTICULARS	Units	2021-22	2022-23	2023-24	2024-25	2025-26
Revenue from Operations	Rs. Crs	4337	3899	4054	4022	4351
Gross Margin (EBITDA)	% of Revenue from Operation	7.40	9.97	11.98	13.20	7.54
Profit before tax (PBT)	Rs. Crs	206	279	383	405	199
Profit after tax (PAT)	Rs. Crs	135	159	283	294	148
Net Worth	Rs. Crs	2307	2395	2643	2854	2909
Return on Net Worth	%	5.83	6.63	10.71	10.31	5.07
Capital Employed	Rs. Crs	3632	3198	3534	3972	4121
Return on Capital Employed (ROCE)	%	7	10	12	12	6
Working Capital	Rs. Crs	2822	2480	2773	3094	2876
Asset Turnover Ratio	%	77	79	76	69	63
Manpower	No	5573	5197	4888	4761	4930

Revenue from Operations – Business Group wise



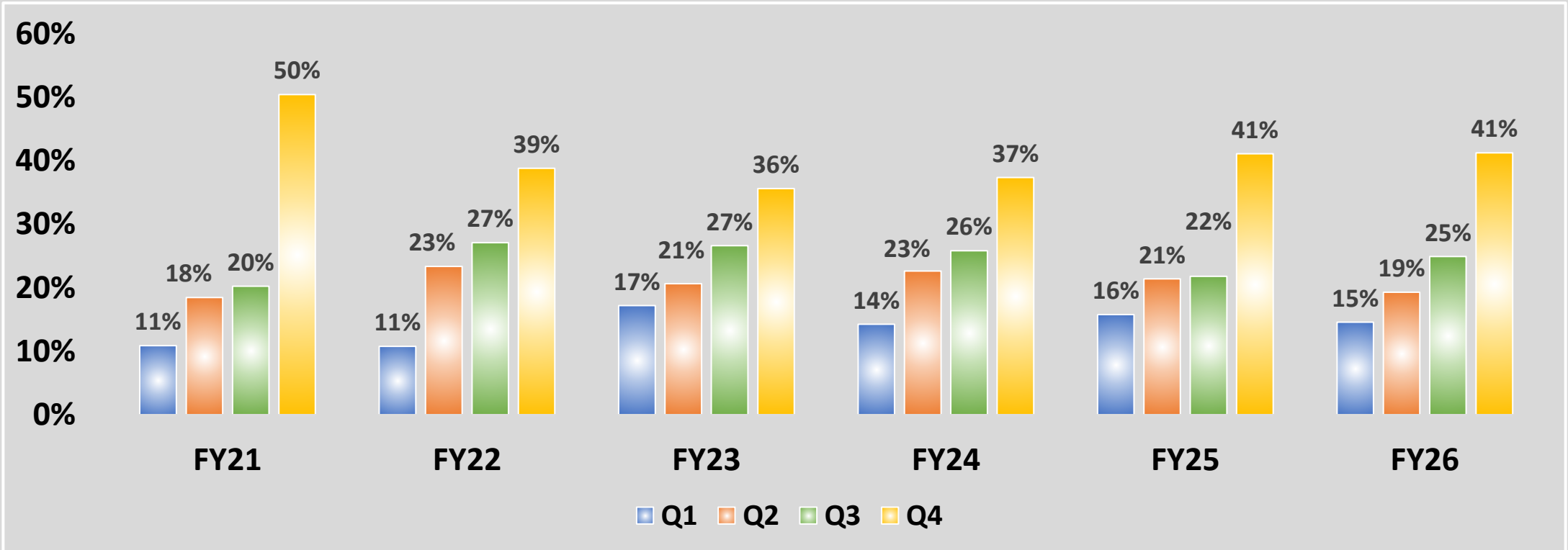
₹ Crs.



Revenue from Operations (Q on Q)

₹ Crs.

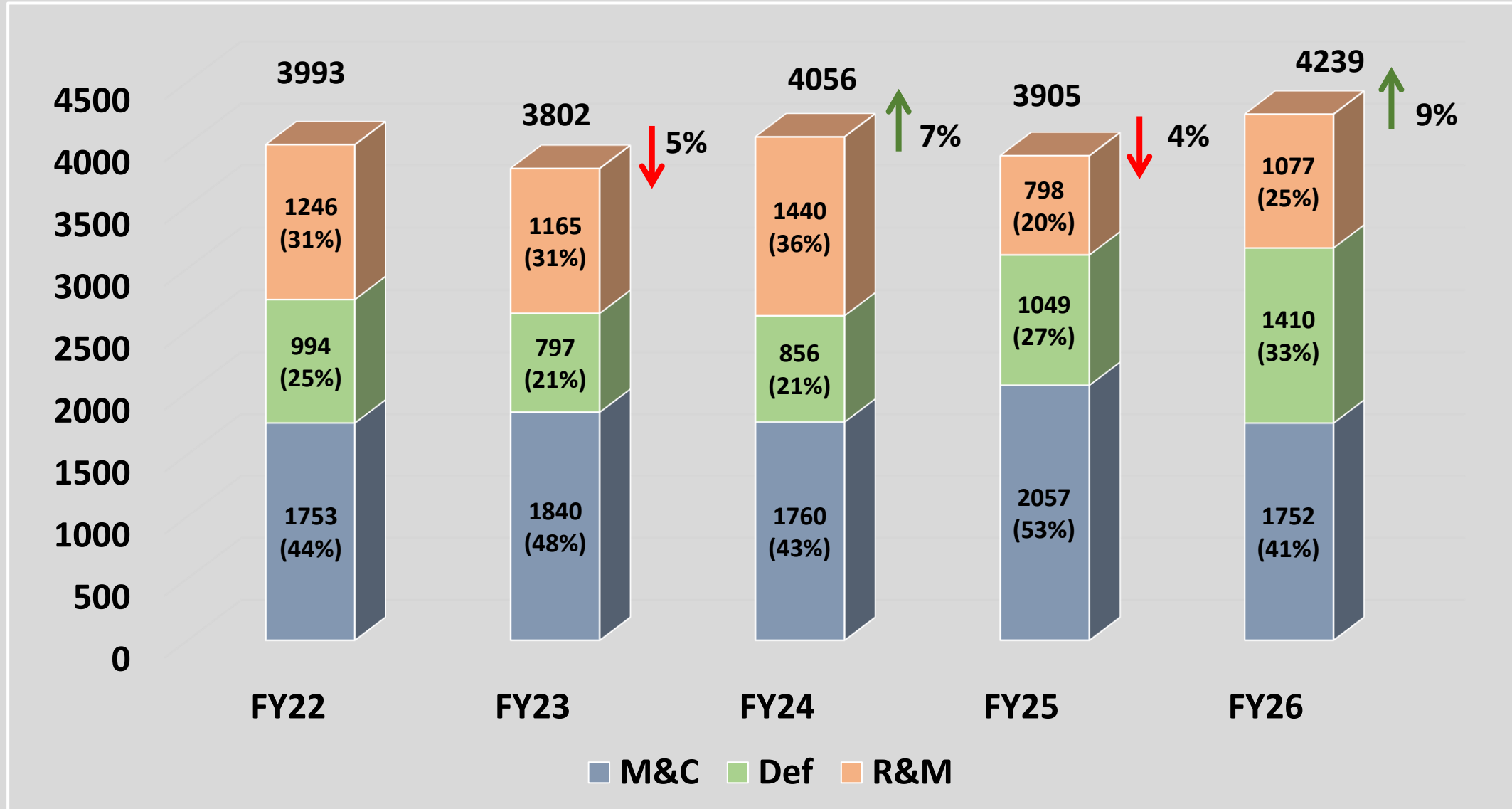
Particulars	FY21	FY22	FY23	FY24	FY25	FY26
Quarter 1	391	467	669	577	634	634
Quarter 2	664	1012	805	917	860	839
Quarter 3	728	1175	1037	1047	876	1083
Quarter 4	1814	1684	1388	1514	1653	1794
Total	3597	4337	3899	4054	4022	4351



Value of Production – Business Group wise



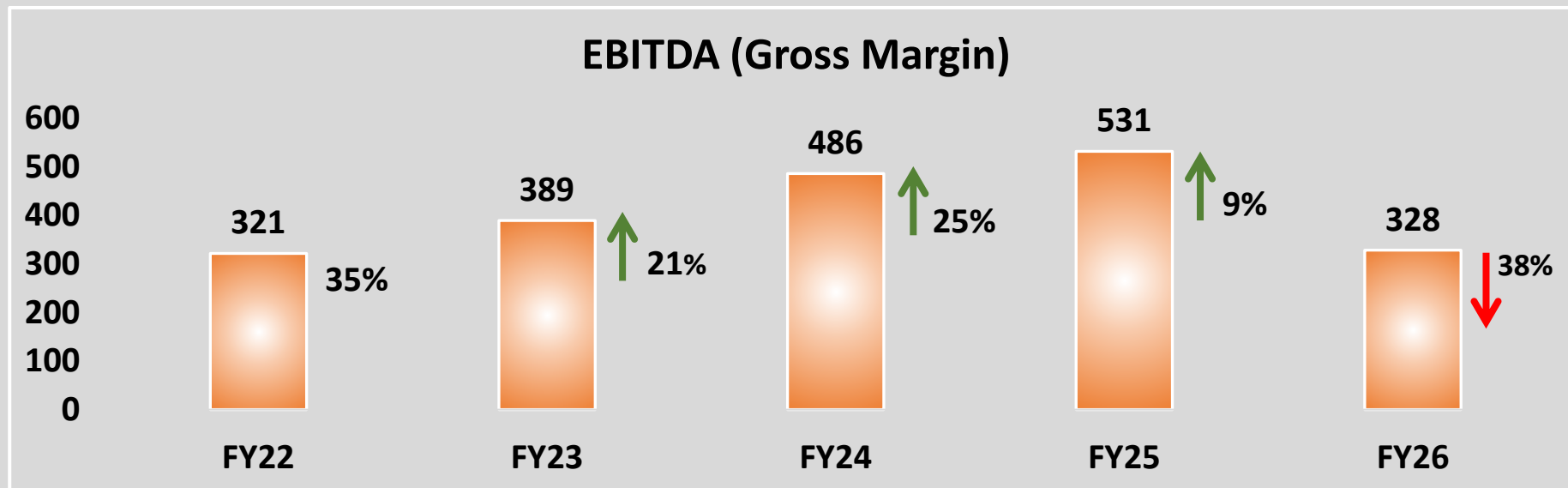
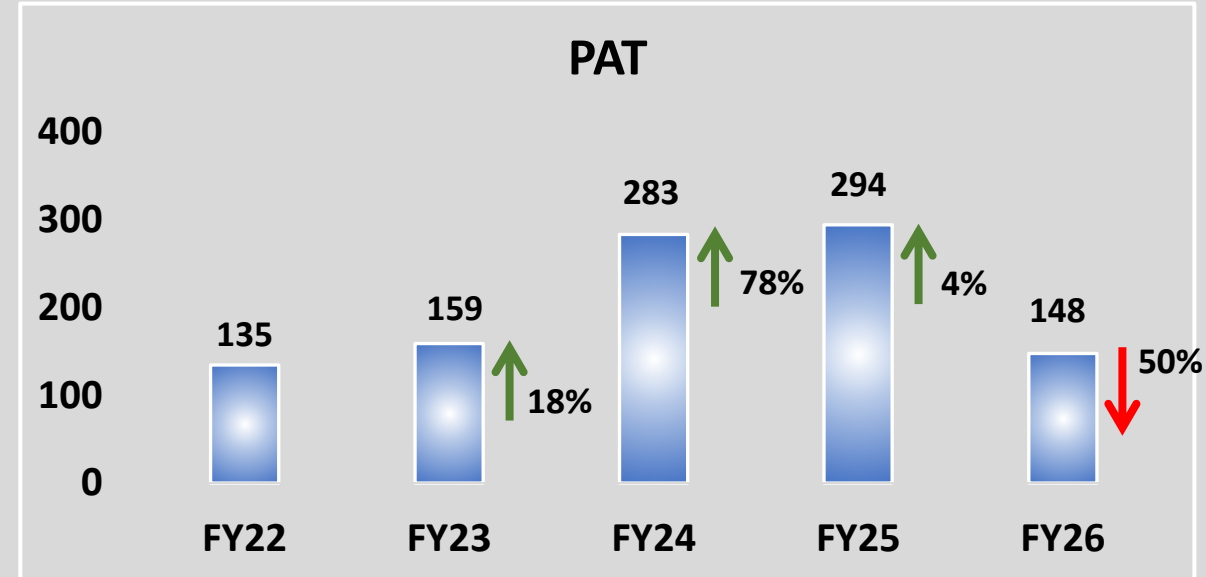
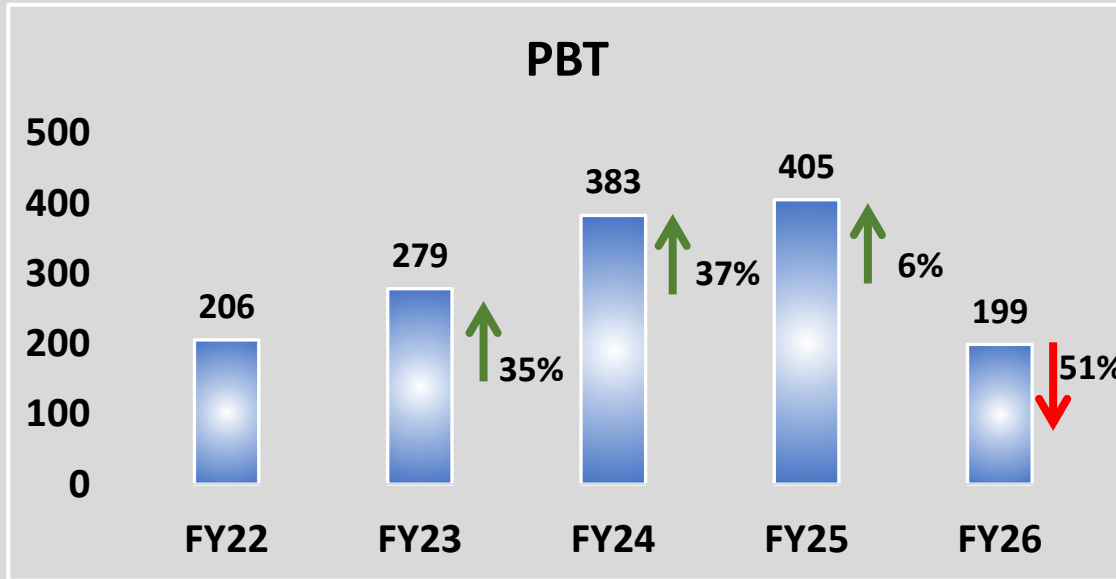
₹ Crs.



Profitability



₹ Crs.

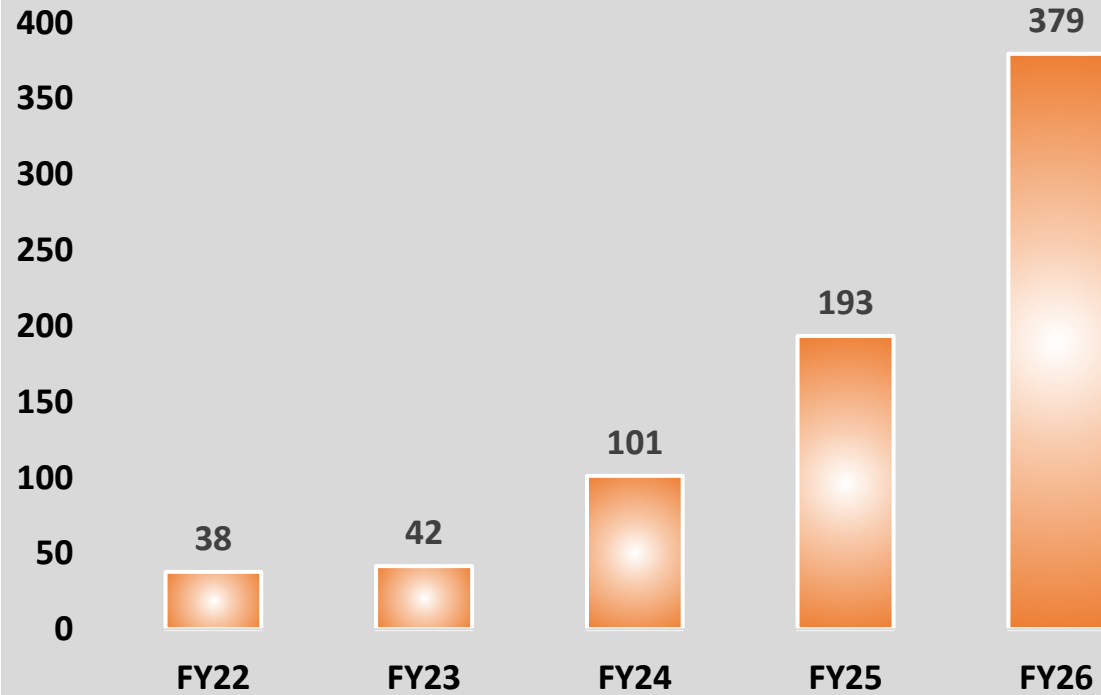


CAPEX AND R&D EXPENDITURE

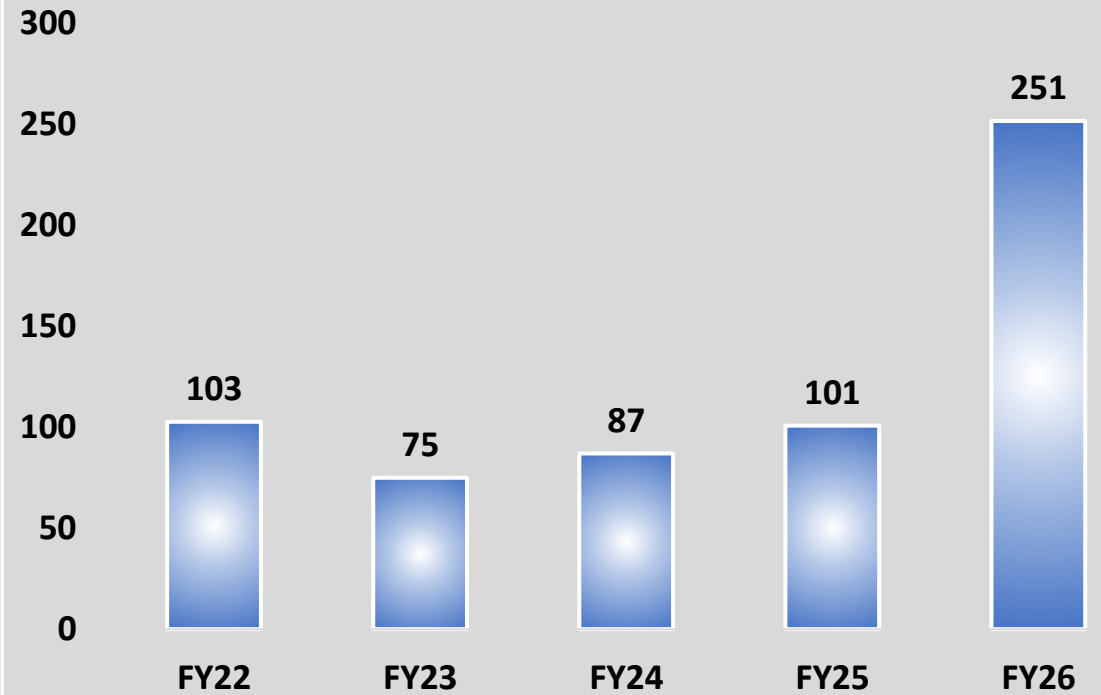


₹ Crs.

CAPEX

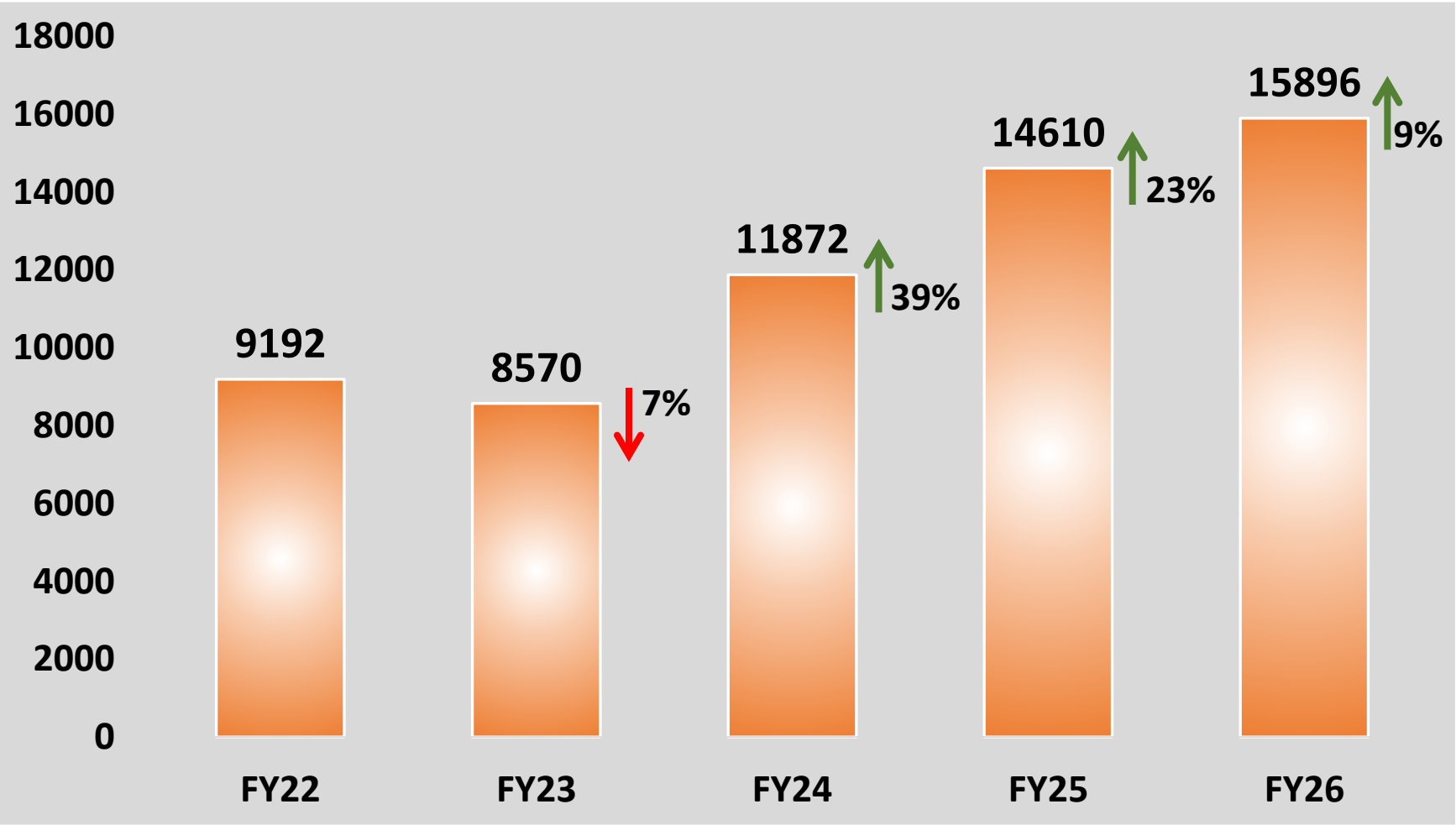


R & D Expenditure



ORDER BOOK

₹ Crs.





International Business — Order Booking

\$107M

Total Export Orders
Highest ever order booking

\$60M

Africa
Rolling Stock

\$37M

West Asia
Mining Equipment

\$10M

CIS & SE Asia
Equipment & Services

Future Pipeline Opportunities

1. West Asia — Mining Equipment

Additional order booking opportunity of \$19.2M under active exploration.
Repeat Order of \$37M

2. North Africa : Mining Equipment

Significant opportunity estimated at \$20M in the region

3. CIS Countries — Bulldozers

Major order for Bull Dozers under final stages of around \$10M

4. Africa — Construction Equipment

Construction equipment opportunity of \$6.5M from African markets

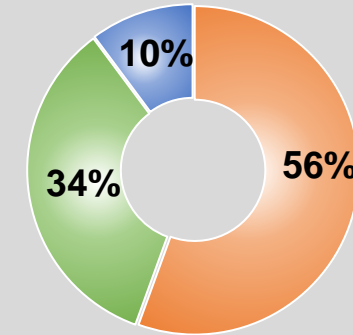
5. West Asia: Defence Product

HMV supply to integrator for final delivery to MOD

6. BrahMos Aerospace (BAPL)

HMV supply for SE Asia export

Regional Order Distribution (\$107M Total)



■ Africa (Metro) ■ West Asia (Mining) ■ CIS & SE Asia

Key Strategic Pursuits — Rail & Metro

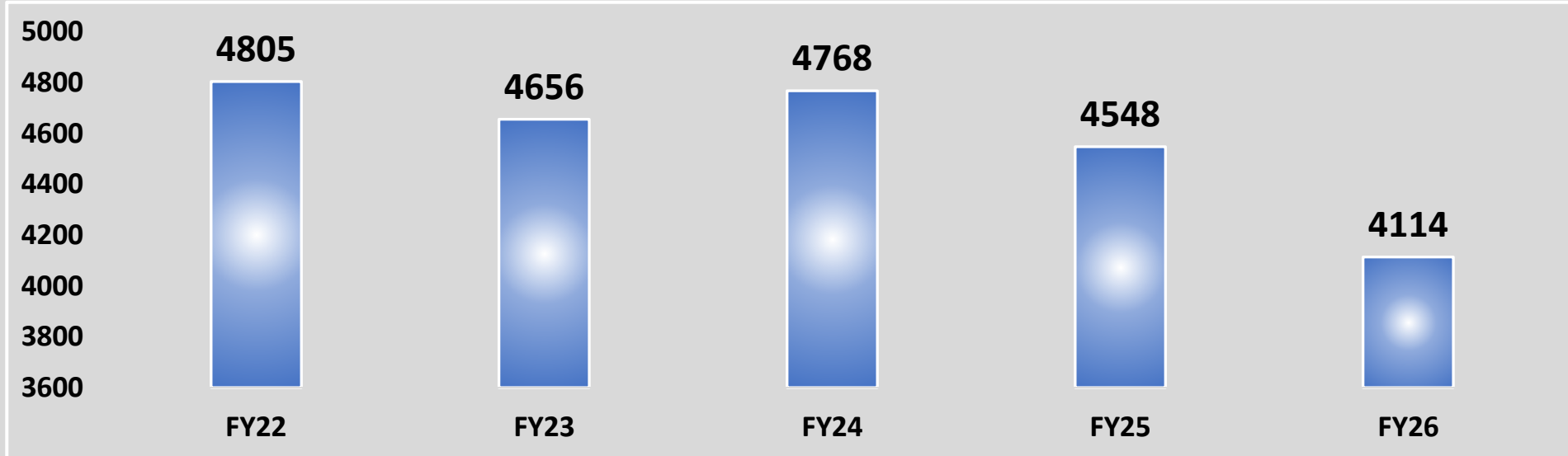
Rail & Metro Products

- **SMH Rail (Malaysia):** MoU In place to jointly explore Rail & Metro opportunities in Malaysia, SE Asia & Africa
- **Tel Aviv Metro:** MoU with DMRC for Infra 2 PQ participation, PQ expected Jun–Jul 2026. Order Finalization in Next FY. Sizable opportunity of **\$250M** in two phase
- **Dublin MetroLink :** BEML as Key Rolling Stock Provider in a consortium with EPC player. Order Finalization in Next FY. Opportunity of **\$90M** .

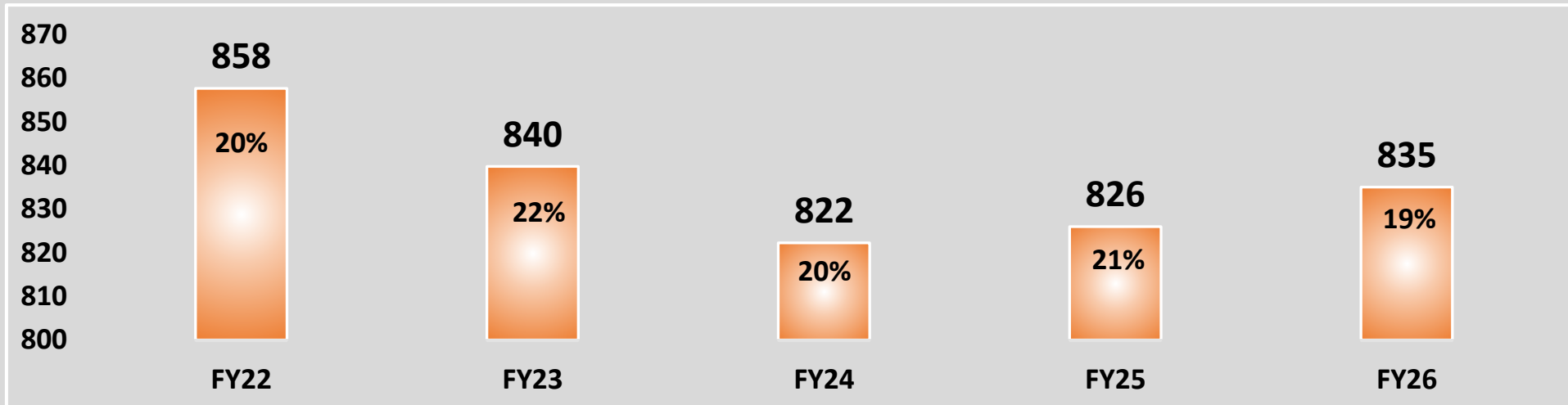
Collection & Employee Remuneration



Collection



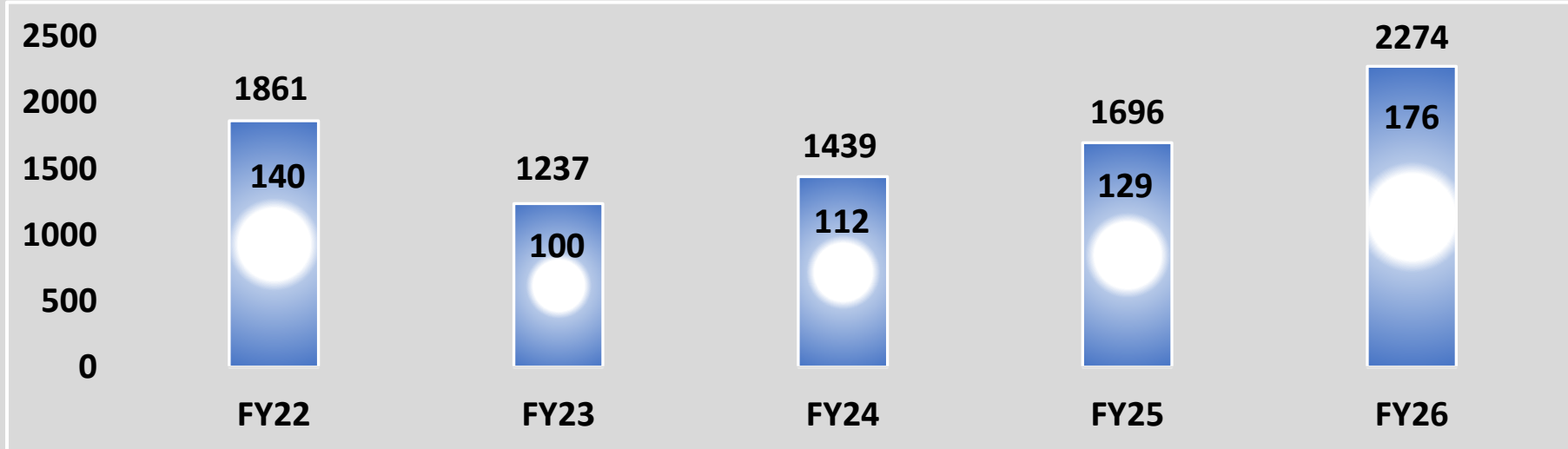
Employee Remuneration (% of Revenue from Operation)



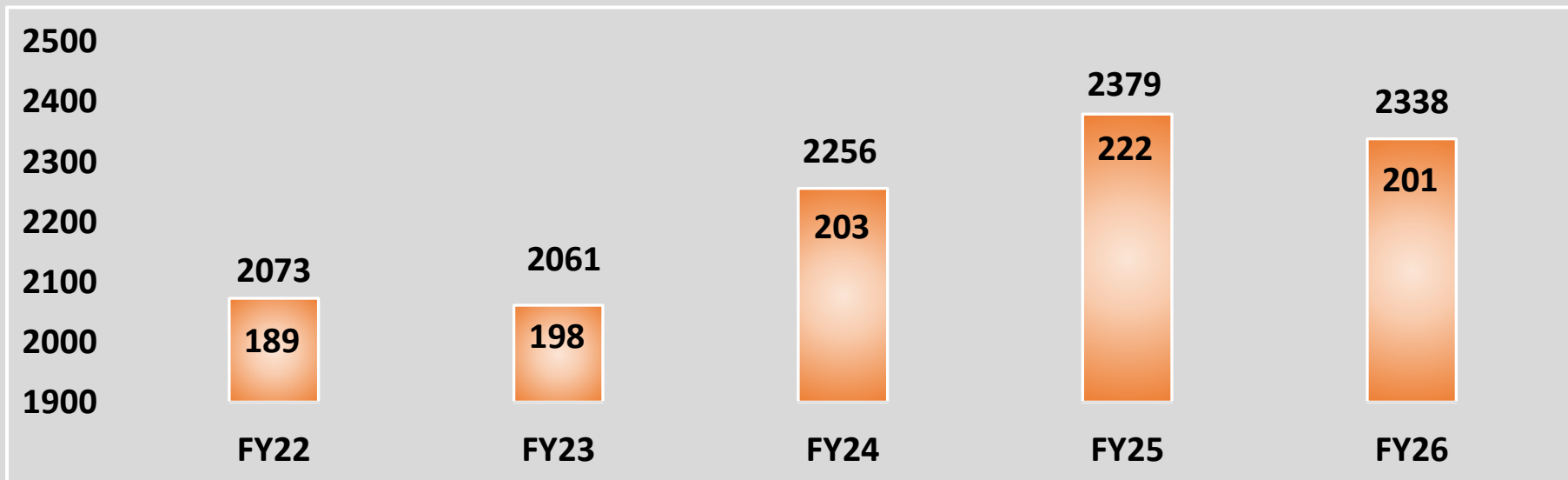
Debtors & Inventory



Debtors (In Days to Revenue)




Inventory (In Days to VoP)





 Bangalore Complex



 Earth Moving Division, KGF

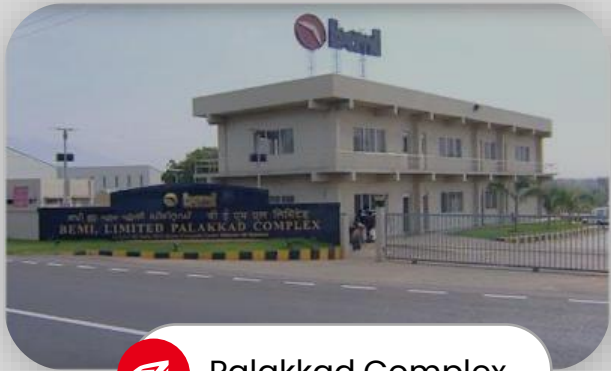


 Truck Division, Mysuru

धन्यवाद




 Engine Division, Mysuru



 Palakkad Complex



 R&D Centre, KGF 26