

Date: 20th May, 2025

To,
Department of Corporate Services,
BSE Limited,
P J Towers, Dalal Street,
Mumbai- 400 001.
BSE: Scrip Code: 531112

To,
Listing Department,
National Stock Exchange of India Limited,
"Exchange Plaza", C-1, Block-G,
Bandra Kurla Complex, Bandra (E),
Mumbai- 400 051.
NSE Trading Symbol: BALUFORGE

Subject: General Update – Submission of Updated Corporate Presentation

Dear Sir / Madam,

Please find enclosed the updated Corporate Presentation.

Kindly take the above information on your records.

For Balu Forge Industries Limited

JASPALSINGH
PREHLADSINGH
H CHANDOCK

Digitally signed by
JASPALSINGH
PREHLADSINGH
CHANDOCK
Date: 2025.05.20 19:50:44
+05'30'

Jaspalsingh Chandock
Managing Director
DIN 00813218



BALU FORGE INDUSTRIES LTD

CIN: L29100MH1989PLC255933

506, Imperial Palace, 45 Tolly Park Road, Andheri East, Mumbai – 400 069, India
M: 8655075578 **E:** sales@baluindustries.com/ compliance@baluindustries.com **W:** www.baluindustries.com



COMPANY PROFILE

BALU FORGE INDUSTRIES LIMITED



www.baluindustries.com

COMPANY OVERVIEW

Balu had a humble beginning in the year 1989, in Belgaum, India. It has been a long journey & over three generations of the Balu Family have worked to build a truly global enterprise. But we have only just started & endeavor to become one of the largest Precision Engineering & Metal Forming Company in the world. We have also adapted to the changing times & enhanced our product portfolio to meet both the needs of both the Conventional ICE Applications & the New Energy Vehicles.



INDUSTRY SERVED & APPLICATIONS



Agriculture : Tractors, Harvesters | Heavy Duty : Trucks, Buses, Trailers | Automotive | Generators : Industrial, Standby, Home backup, Portable | Oil & Gas : Pumps & Compressors | Refrigeration : Compressor | Industrial | Off Road & On Road : Motorcycles, Carts, Jet Skis | High Performance : Racing Series | Defence | Locomotive | Marine | Aerospace



AGRICULTURE



AUTOMOTIVE



INDUSTRIAL VEHICLES



RAILWAY



DEFENCE



AEROSPACE



EARTHMOVING MACHINERY



OIL & GAS



WIND ENERGY



MARINE

COMPANY HISTORY & KEY MILESTONES



1989

The foundation of 'Balu' was laid by Mr. Prehlad Singh Chandock



1991

First component manufactured in our factory



1995

First component exported to an overseas market



2006

Acquisition & Installation of the Ursus Manufacturing Plant from Ursus, Poland



2010

Acquisition & Installation of the Thyssenkrupp Plant from L'horme, France



2011

The company successfully achieved the milestone of building a presence in over 80 countries worldwide



2012

Got accredited with ISO/TS16949:2009 accreditation from world renowned company TUV NORD



2014

Achieved manufacturing of 1000 crankshafts in a single day



2017

Became a supplier of Choice to over 25 OEs spread over 5 Continents



2020

Got Accredited with the 14001:2015 & ISO 45001:2018 Certifications. Became an Approved Vendor to the Ordnance Factory Board & established a specialized manufacturing unit for the Defence Industry. Balu completed the transition & listing on the Stock Exchange. The constitution of the company was changed to public limited company



2021/2022

Acquired the Precision Machining Unit of the Mercedes Benz Truck factory from Mannheim, Germany

Balu successfully completed the ESG audit by a reputed audit firm & joined the United Nations Global Compact Program in its efforts to be ESG compliant



2023

Laid the foundation for the greenfield forging & machining facility spread over 46 Acres in Belgium, India



2024

Acquisition of 3 fully automated forging lines with GERB Technology namely: 16T, 10T Forging Hydraulic Hammer & 8000T Forging Press. These machines contribute to a combined forging capacity of 72,000 tons annually.



2024/2025

Invested in 7 axis, 11 axis machining capability, 25T Hydraulic hammer line & a fully automated Empty Shell & Mortar production line with an annual capacity of 360,000 shells per annum.

CORE COMPETENCY



The Core Competencies which distinguish us from our competitors & the pillars which have ensured the building of a strong brand worldwide are as below:

- » Complete CNC manufacturing capability
- » Over three decades of experience in Precision Engineering
- » Diversified Product Portfolio & Applications
- » Supplier of choice for OEMs
- » State of the Art Manufacturing set up
- » In-house tool room
- » In-house Metallurgical lab
- » Dedicated R&D Facility
- » Strong Emphasis on New Energy Vehicles & Components
- » All machining & forging operations in-house
- » Well established brand worldwide
- » Fully Integrated Plant providing full supply capability to its Geographically dispersed customers from concept to Product design, engineering, manufacturing, testing & validations, Highly skilled work force with a technologically advanced plant
- » In-house capability to manufacture a product from 1 Kgs to 1500 Kgs & upto 3 meters long
- » Supply base comprising over 25 OEMs both in India & overseas
- » A Global customer base in over 86 countries

FACTORIES

• PLANT ADDRESS UNIT 1

43 - B, Kakti Industrial Area, Kakti, Belgaum - 591113, Karnataka, India.

Area Size : 5 acres

• PLANT ADDRESS UNIT 2

44 - A, Kakti Industrial Area, Kakti, Belgaum - 591113, Karnataka, India.

Area Size : 2 acres

• PLANT ADDRESS UNIT 3

LV-21 - Hamriyah Free Zone Sharjah United Arab Emirates.

Area Size : 1 acres

• PLANT ADDRESS UNIT 4

428/1, Next to Aequs SEZ, Hattargi Village, Taluk Hukkeri - 591243, Karnataka, India.

Area Size : 46 Acres

• HEADQUARTER

5th Floor, Imperial Palace, 45, Telly Park Road, Andheri East, Mumbai - 400 069, Maharashtra, India.

OUR CAPABILITIES

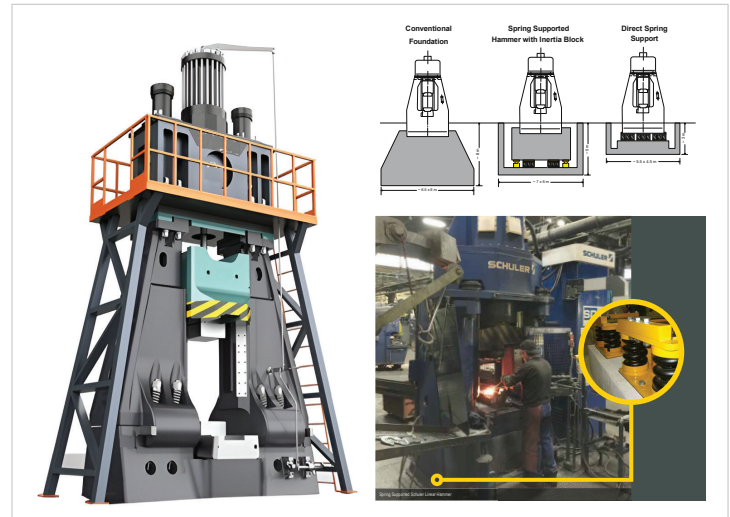
ADVANCED FORGING

BFIL offers cutting-edge forging capabilities with its advanced GERB technology.

25 Ton, 16 Ton, 10 Ton Hydraulic Hammer and 8000 Ton Mechanical Press

- Hydraulic Power Head.
- Enhancing capacity of the Hammer, resulting in significant energy saving.
- Anti Vibration Technology from GERB Germany.
- Increases accuracy and enhances life of the Presses and Hammers.
- Increase in uptime of Hammers (No Breakdown)
- It reduces vibration up to 90%.

Forging Capacity : **100000** TPA (Further expansion in process)



Note: The above images are for representative purpose only.

OUR CAPABILITIES

PRECISION MACHINING

BFIL specializes in precision machining with advanced 7-Axis & 11-Axis capabilities.

Machining Capacity : **45000** TPA
(Further expansion in process)



7 Axis Machining

Our state-of-the-art 7-axis machining delivers unmatched precision and efficiency for complex manufacturing requirements. This advanced technology allows simultaneous movement along seven axes, enabling the creation of intricate geometries and fine details that traditional methods cannot achieve.



11 Axis Machining

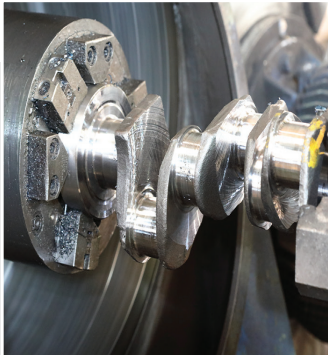
Our state-of-the-art 11-axis machining offers unmatched precision, efficiency, and versatility for manufacturing complex parts in the aerospace sector. It aids in achieving higher precision, shorter setup time, increased productivity, complex geometries, increases flexibility & enable higher customisation. These factors make 11-axis machining ideal for producing high-precision, complex parts in industries requiring tight tolerances and reduced turnaround times.



Junker Grinding M/C

High-precision machine tool used for grinding complex geometries, particularly in the manufacturing of cutting tools, automotive components, and other precision parts.

Junker machines are known for their advanced technology, efficiency, and ability to perform multiple grinding operations in a single setup.



KEY & CORE COMPONENT

Crankshafts



Under Carriage



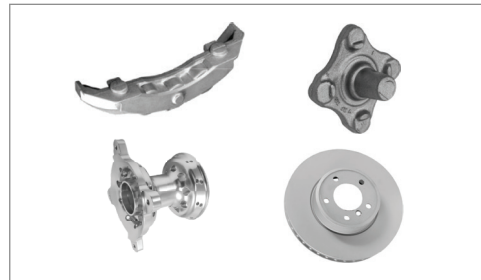
Transmission & Clutches



Chassis



Brake Parts



Hooks



Towing Accessories



Supply Capability
Fully Finished or Assembled

AEROSPACE COMPONENTS

- SPECIAL ELECTRICAL INDUCTION HEATING FURNACE WITH TEMPERATURE CONTROLLER WITHIN 3-DEGREE CENTIGRADE.
- SCADA SYSTEM AND TEMPERATURE RECORDING FOR EACH JOBS.
- AUTOMATION WITH ROBOTS FOR MATERIAL HANDLING.

Aero Structure



Weight Range: 50 kg to 250 kgs Material: Titanium + Aluminium Alloy Scope of Supply: Forged + Semi machined

APU Components



Weight Range: 5 kg to 300 kgs Material: Titanium + Aluminium Alloy Scope of Supply: Forged + Semi Machined

Landing Gear Components



Weight Range: 10 kg to 300 kgs Material: Titanium + Aluminium Alloy Scope of Supply: Forged + Fully machined

Engine Components



Weight Range: 5 kg to 300 kg Material: Titanium + Aluminium Alloy Scope of Supply: Forged + Fully machined

Note: The above images are for representative purpose only.

RAILWAY COMPONENTS

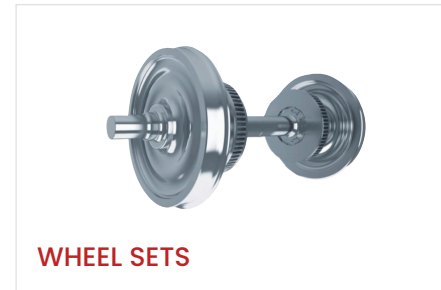
BFIL has evolved to produce a wide range of wheels, axles & wheel sets to meet the needs of our customers. Hence contributing sustainably to the Indian government's Make in India initiative. We are one of the few fully integrated businesses, producing wheels, axles & wheel sets all under one roof. The firm has an experienced railway vehicle design & development team on hand to serve our patrons with prompt, high-quality & end to end solutions. The company meets the bulk requirements for locomotives, passenger vehicles, freight vehicles & other coaching vehicles in terms of wheels, axles & wheel sets.



WHEELS (upto 800 Kgs to 1350 Dia)



AXLES (Upto 900 Kgs to 2.5 Meters)



WHEEL SETS

OTHER COMPONENTS

BFIL is a leading manufacturer of high-quality, precision-engineered heavy forged components for the railway industry.



Connecting Rod
50 to 150 kgs



Connecting Cap
25 to 100 kgs



Crankshafts
2 to 1000 kgs



Camshafts
50 to 100 kgs



Flanges
100 to 600 kgs



Hooks
10 to 200 kgs



Gear Blank
10 to 500 kgs



Nuts
5 to 150 kgs



Tail Pin
10 to 25 kgs



Arm
20 to 50 kgs



Link
50 to 100 kgs



Dog Pin
10 to 50 kgs



Dome Nuts
10 to 25 kgs



Control Arm
10 to 25 kgs



Bend Arm
10 to 30 kgs



Lever
15 to 25 kgs



Yokes
10 to 50 kgs



Yoke Shafts
10 to 100 kgs



Roll Link
10 to 25 kgs



Pivot
100 to 450 kgs



Link Pin
15 to 50 kgs



Rocker Lever
10 to 50 kgs



Valve Body
10 to 850 kgs

Note: The above images are for representative purpose only.

DEFENCE COMPONENTS

BOMBSHELL



Mortar Ammunition
51 mm, 81 mm, 120 mm



Artillery Ammunition
155 mm, 130 mm, 105 mm



Tank Ammunition
Round 120 mm, Shell 125 mm



RCL Ammunition
Round 84 mm



Naval Ammunition
Cartridge 40 mm, 76.2 mm,
76/62 SRGM, RGB 60 Rocket



Aerial Ammunition
500 kg GP Aerial Bomb

Fully Automated Empty Shell Production Line

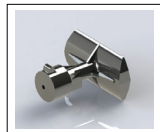
(Upto 360,000 Shell capacity per Annum)

- 1000T Hydraulic Press
- 400T Vertical Elongator
- 600MT Hydraulic Nosing Press
- Induction Heater 1800 KW
- Induction Heater 600 KW (Partial Heating)
- Copper Band Dia Press for Assembly
- Powder Coating Paint shop with Automation
- 6-Axis multiple Robot
- Phosphating Plant of 155mm Full Automated
- Machine Auxiliary Supporting
- Shot Blasting
- Sand Blasting
- CNC Machining
- Heat Treatment
- Cutting (Circular Saw) m/c

OTHER COMPONENTS



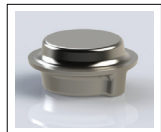
Crankshaft



Breach Base



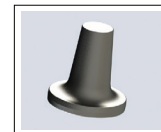
Road Wheel Arm



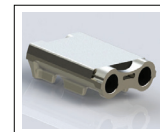
Flange



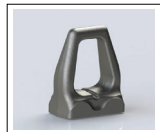
Crank 690



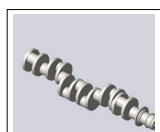
Hub Carrier



Track Link



Track Guide



EFA Crankshaft



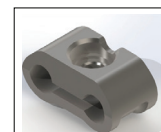
Sun Gear



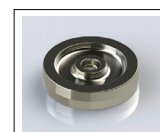
Shoe



Gear Ring (Solid)



Clamp



Intermediate Gear

A large part of the Capital Investment for the next 10 years is planned towards Defence Production with also key Joint Ventures / Technology Partnerships in the Pipeline. The key areas planned in the coming years are Artillery, Undercarriage parts for Armored Vehicles, Weapons & Ammunition for Light & Heavy regiments and Forged & Machined Components for the Engine Division. There is a Dedicated Unit planned for Ammunition & Advance Defence System Production in partnership with prominent players in the Global Defence Production Mix. In Addition to the Dedicated Defence Production Facility, the R&D & Innovation Campus in Belgaum, India will spearhead the strategy laid down to build Advance Defence systems & solutions. There will continue to be a strong focus on further expanding the reach & customer base amongst more Defence Organizations globally & building a strong Defence Production Center for the Local & Global Defence Industry.

OIL & GAS COMPONENTS

BFIL is a manufacturer specializing in forged components for the oil and gas industry. Their product range includes critical equipment and parts used in upstream, midstream, and downstream operations. Here's a breakdown of their offerings:



GATE VALVES



PRESSURE CONTROL EQUIPMENT



FLANGES



CHOKE VALVES



CHICKSAN LOOPS



MANIFOLD UNITS



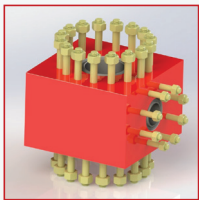
MUD GATE VALVES



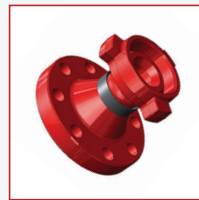
HAMMER UNIONS



FORGED HYDRAULIC FITTING, STUBS ENDS



TEES



X-OVERS



PUP JOINTS

Note: The above images are for representative purpose only.



THANK YOU

www.baluindustries.com

